

Y
CLASS





EXPERIENCE THE
EXCEPTIONAL

Your yacht is an extension of yourself. A statement of your lifestyle. She needs to deliver unforgettable experiences for you, your family and friends. Every Princess yacht is designed with our forward-thinking mentality and crafted with meticulous attention to detail. So whether you're dashing across the water or moored in your favourite bay, you will recognise the difference our design and details make, inside and out.

Experience the exceptional.



CRAFTED IN PLYMOUTH

Perched on the edge of the English Channel lies the city of Plymouth, where we established our home in 1965. Today Princess shipyards cover an area of over 1.1 million square feet, an area rich in British maritime heritage. In fact, South Yard, where our X Class Super Flybridge yachts are constructed, is a former naval yard dating back to the 17th century. From the outset, our goal has been to meticulously sculpt our yachts around our owners' enjoyment of them. Such dedication and attention to detail resonates deeply with our Plymouth craftspeople.

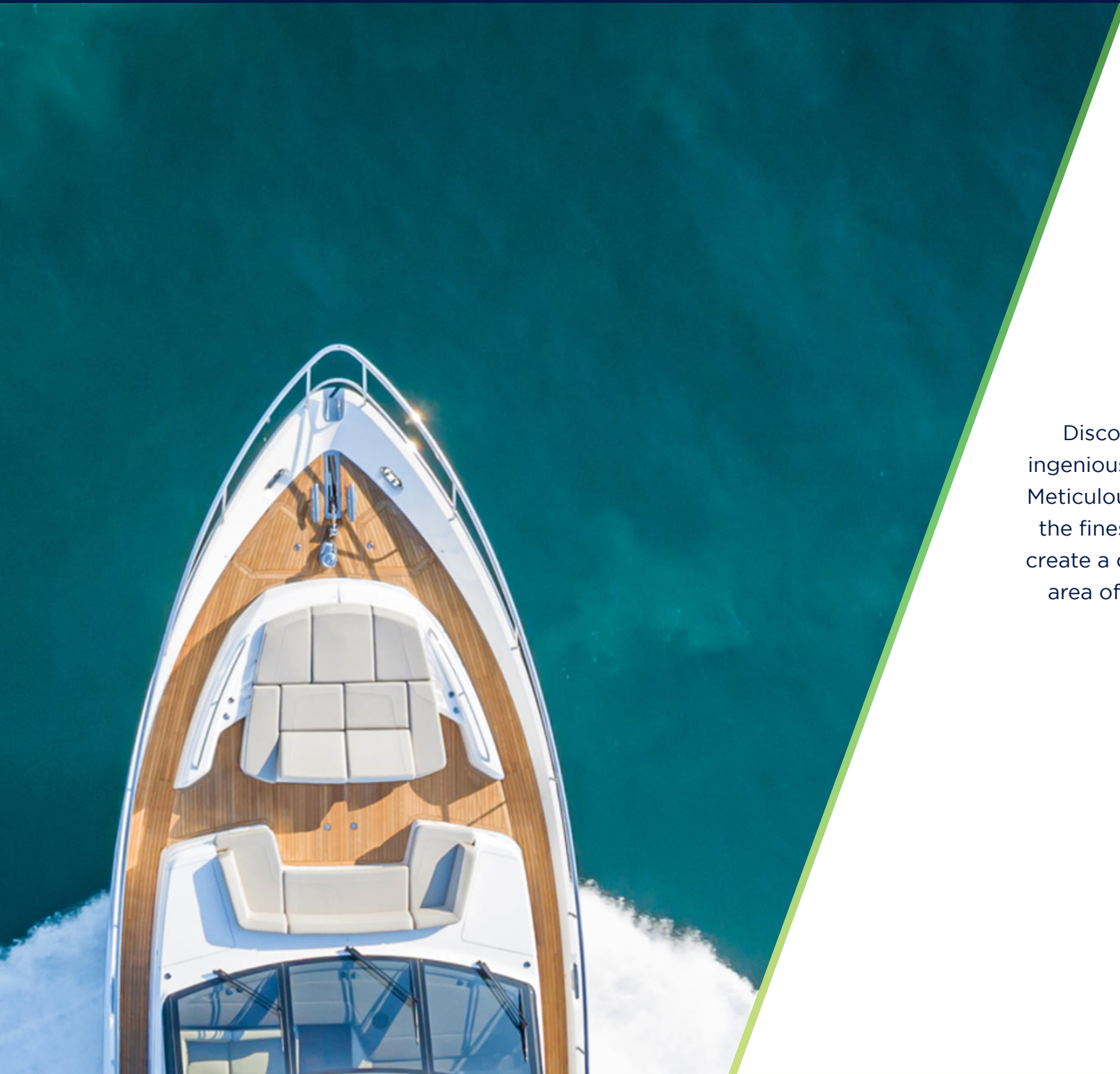
Over 3,000 people, each possessing a mastery of their skill, fastidiously realise this vision in our shipyards. Through a culture of innovation, our yachts are not only some of the most technically-advanced in the world but also the most beautifully realised.



THE EXPERIENCE OF PERSONALISATION

Every yacht in the Y Class range is unique. We start with an inspiring platform, combining luxury and performance, with a focus on meticulous detailing. It's then down to you to create your ultimate yacht with a variety of layout options and a fine selection of designed interiors with expert guidance from the Princess Design Studio. It is this journey that makes the Y class so enticing. A refined yacht that is ingenious by design, exciting to experience and personalised by you.





Y CLASS

Discover a world of motor yachting that's ingeniously crafted to capture your imagination. Meticulously detailed surroundings finished with the finest materials, bathed in space and light, create a compelling conversation between every area of the boat. A sophisticated experience with the power to excite.





Y 95



The flagship of our Y Class range – the all-new Y95, has been crafted with an emphasis on long-range cruising comfort and inspired styling. With the latest hull form and an efficient wave-piercing bow, she will provide class-leading seakeeping, reaching speeds up to 24 knots. With a spacious garage and transformer bathing platform and the option of a beach club, your maximum enjoyment of time on the water is assured. Her evolved exterior styling features the longest and most expansive hull windows ever installed on a Princess yacht, whilst her spacious indoor and outdoor living spaces are comparable to those of larger craft.





Configurable layout options throughout and a new interior design language await, with the guidance of your own Princess Design Consultant to assist with defining your vision. With an interior volume comparable to larger yachts, her main deck features a full beam master stateroom with skylights and is complemented by a further four well-appointed en-suite guest cabins. Her generous crew accommodation includes an en-suite Captain's cabin with double bed.





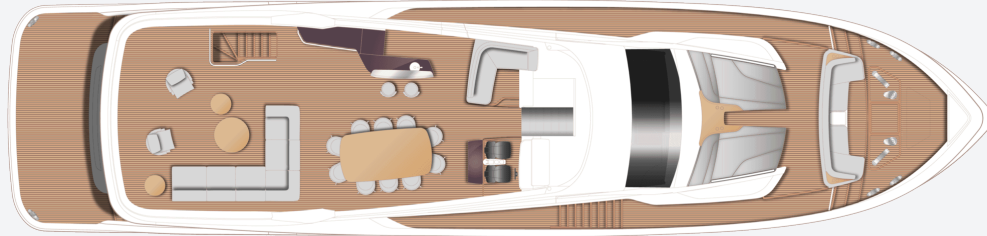


EXPERIENCE THE Y95

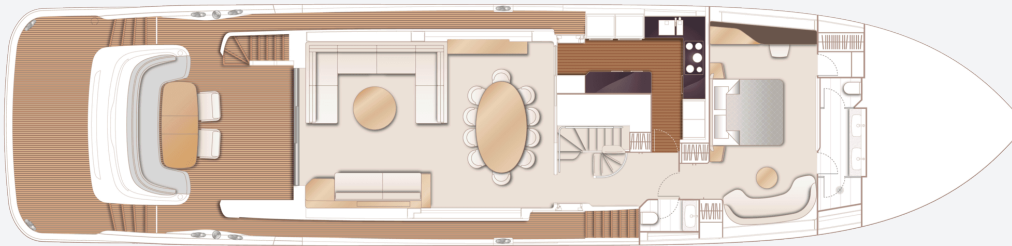




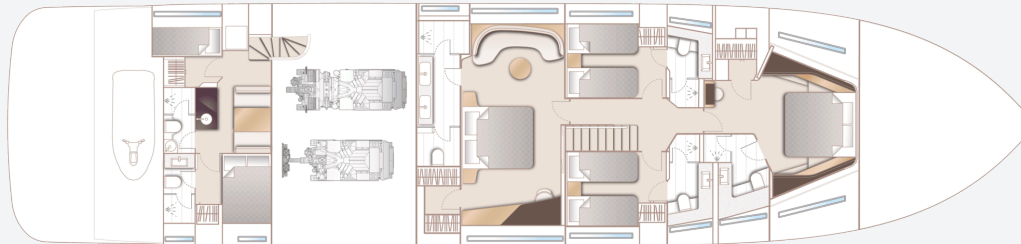
Y95
SPECIFICATION



Y95 Flybridge



Y95 Main Deck



Y95 Lower Deck

PRINCIPAL DIMENSIONS

Length overall (incl. pulpit)	95ft 6in (29.1m)
Length overall (excl. pulpit)	93ft 9in (28.58m)
Beam	22ft 3in (6.77m)
Draft approx. (full load)	6ft 6in (1.97m)
Displacement approx. (half load)	111,762kg (246,393lbs)*
Fuel capacity	3,040 gal/3,650 US gal/13,818l
Water capacity (excl. calorifier)	410 gal/492 US gal/1,865l

ENGINES

Twin MAN V12 (2 x 2,000hp)	Speed range: 22-24 knots†
-----------------------------------	------------------------------

FULL SPECIFICATION

DECK FITTINGS

- 6mm teak-laid transom platform, transom steps, cockpit deck, stairway to flybridge, side decks, steps to foredeck, flybridge deck and foredeck walkthrough areas
- Reversible hydraulic anchor winches with bridge controls (Lewmar V8)
- Anchor pockets with anchor launch and retrieve
- Twin anchor system incorporating two 125kg galvanised kedge anchor with 100m of 14mm galvanised chain
- Deck chain stoppers (2)
- Mooring bollards forward (4)
- Mooring bollards aft (6)
- Mooring bollards mid-ship (1 per side)
- Twin electric sternline mooring winches (Lewmar C6)
- Deck hatch access to chain, Bosuns and fender storage locker (locking, with access ladder)
- Freshwater deck/anchor wash (with both fore and aft deck outlets) (bow deckwash locker, starboard side under transom steps) (quick release bayonet fitting)

- Stainless steel bow and stern fairleads
- Stainless-steel foredeck guard rails
- Stainless steel flybridge handrails
- PVC rubbing band with stainless-steel insert
- LED deck level lighting
- Full set of IMCO navigation lights
- Riding light
- Twin beam searchlight with remote controls (located on hardtop/radar arch)
- Loudhailer (located on mast)
- Stern docking lights (on underside of canopy/flybridge overhang)
- Twin electric horns (located on mast)
- Fuel and water fillers (fuel: main deck, port and starboard, water: starboard side)

COCKPIT AND BATHING PLATFORM

- Self-draining
- Upholstered U-shaped seating with storage below (non-locking)
- Teak dining table with removable central leaf section paired with 2 dining chairs
- LED overhead and deck level lighting

- Stainless-steel handrails
- Stern docking station controls on starboard side including thruster controls and emergency engine stop Rexroth control as standard
- Remote control 5.47m telescopic passerelle with folding handrails
- Watertight (double D sealed) hinged locking door giving access from transom into garage / optional beach club area
- Engine room to cockpit escape hatch
- Garage (to take wet-bike up to 3.05m) with electro-hydraulic door and manual wet-bike launch system with additional storage for SEABOBs (2 max, starboard bulkhead mounted rack)
- Rope storage locker (non-locking)
- Starboard locker containing remote fuel cocks, manual bilge pump with valve chest and manual controls for automatic fire extinguishers
- Integral stairway to flybridge with teak step treads

- Twin glazed transom gates leading to bathing platform
- Electro-hydraulic teak laid transformer bathing platform (1000Kg SWL)
- Retractable bathing ladder (manual) in side of bathing platform
- Hot and cold transom shower
- Three phase shore support inlet (380v-415v / 42kVa @50Hz) with Glendinning cabledmaster (15m/50ft) and a single-phase shore power inlet (220-240v / 15kVa @ 50Hz. Both shore supports with isolation transformers. (US Spec single phase 2 x 100A @ 60Hz)
- Cockpit table cover, U-shaped seat cover & dining chairs cover
- Optional wetbar unit with wash basin
- Port side deck lockable access and stairway to crew accommodation

HELM

- Enclosed pilot house with central leather upholstered slim-line helm seat with arm rests.
- L-shaped companion seating to port with table
- Sliding companionway door to flybridge
- Instrument console with LED display incorporating engine instruments, CCTV linked

- to Böning screens, fuel gauges, alarms and rudder position indicator
- Dual station helm position instrument and controls
 - power-assisted electro-hydraulic steering (SeaStar)
 - steering wheel
 - high-speed magnetic compass
 - electronic engine controls
 - bow thruster control
 - hydraulic anchor winch remote control
 - colour radar (with scanner) and GPS/chart plotter (twin 19" displays)
 - autopilot
 - speed and distance log
 - echo sounder with alarm
 - VHF with DSC R/T with intercom
 - remote control dual searchlight
 - horn button (to operate twin electric horns)
 - Bilge pump controls with audible and visual alarms
 - engine room fire extinguisher warning system
- Automatic fog horn with loudhailer
- Chart storage
- Drink holders
- Toughened glass screen (clear for night vision)

- with windscreen de-mist system
- Windscreen wipers with freshwater windscreen wash
- Exterior black mesh windscreen covers
- 24v and 240v electrical control panel
- Riding light, helm and navigation light control switches
- USB charging points (2)
- Dimmable LED overhead, concealed lighting (24v) and night lighting with scene selection
- Timber flooring (V groove planked)

FLYBRIDGE AND FOREDECK

- Instrument console with dual station controls and LED display incorporating engine instruments, fuel gauges, alarms and rudder position indicator
- GPS chart plotter (19" display)
- Twin helm and navigator seats with fore and aft adjustment
- Foredeck area with U-shaped seating and storage locker
- Glazed panels in foredeck to allow light through to main deck owner's cabin below
- Foredeck sunbathing area with twin sunpads and integrated adjustable headrests and

- storage locker
- Port side pantograph door giving deck access directly from foredeck to flybridge
- Flybridge aft deck area with free standing furniture
- Dining table with chairs to accommodate 10 persons
- Port forward L-shaped seating area with cupholders
- Naim Uniti Star audio system with waterproof speakers (4)
- Clear view hatch to aft cockpit
- Access stairway to aft cockpit
- Stainless-steel handrails with glass balustrade to aft flybridge deck
- Port wetbar unit with twin barbecue, sink, drawer refrigerator, bin and storage
- Starboard servery unit with storage
- Liferaft deployment system integrated into port and starboard coaming
- LED overhead and deck level lighting
- GRP radar arch
- Radar mast
- Twin matching whip aerials for VHF R/T and radio
- Covers to exterior furniture where appropriate

- Optional crane (1,000kg SWL) concealed in starboard coaming
- Optional GRP hardtop

SALOON

- Large sofa to port with storage below
- Sofa to starboard with storage below
- Coffee table
- 65" 4K UHD LED TV on rise and fall.
- Naim Uniti Star system with Focal 100 ICW6 speakers (4) and Focal Cub Evo subwoofer
- Panoramic tinted toughened glass windows port and starboard
- Triple stainless-steel framed cockpit doors
- Access to main deck lobby
- Dimmable LED overhead and concealed lighting with scene selection
- 220/240v outlets (4)
- USB charging points (4)
- Electric roller blinds to outboard windows
- Manual curtains on wave track to aft patio doors
- Fitted carpet

DINING AREA

- Dining table with dining chairs (10)

- Servery unit with integrated drinks refrigerator, bottle storage and icemaker
- Electric blinds to windows
- Fitted carpet
- Full height glazing port and starboard in way of servery unit/bar and starboard dining area

GALLEY

- Enclosed galley
- Galley unit counter tops in choice of granite or quartz
- 5-zone induction hob
- 900mm wide conventional oven
- Combination convection/microwave oven with grill
- Twin full height refrigeration units with deep freeze drawers
- Ice maker (in freezers)
- Twin stainless-steel sinks with mixer tap
- 12 place dishwasher
- Waste bin
- High- and low-level storage cupboards and drawers
- Extractor fan
- Cutlery and crockery storage
- Space for optional wine cooler

- Manual sliding access doorway to deck saloon/ dining area
- Watertight hinged access door to port side deck
- 220/240v power outlets (4)
- Dimmable LED overhead and concealed lighting with scene selection
- Electric roller blinds to windows
- Timber flooring (V groove planked)
- Bulkhead between galley to owner's stateroom to include insulation layers

MAIN DECK LOBBY

- Access stairway to pilothouse
- Access stairway to lower accommodation
- Storage lockers including space for additional dining chairs when table not extended (under stairs, aft of day head)
- Watertight pantograph access door to starboard side deck
- 220/240v outlet (1)
- Dimmable LED overhead concealed lighting (24v) with scene selection
- Electric blind to window
- Timber flooring (V groove planked)

DAY HEAD

- Electric freshwater toilet
- Wash hand basin and counter top in thermoformed solid surface
- Storage cupboard
- Panoramic tinted toughened glass window
- Manual tension venetian blinds
- Marble/granite/quartz floor

ACCOMMODATION

- All cabins and bathrooms feature opening portholes and air conditioning
- All cabins feature 220/240v power points
- All en-suites feature 240v shaver points

MAIN DECK OWNER'S STATEROOM

- Large double bed with bedside tables and drawers below
- Dressing area with full length mirror, hanging, shelf and drawer storage
- Wardrobes
- Built-in safe
- Port dressing table with integrated mirror, chair, storage drawers and cupboards
- Starboard seating area with sofa and storage below and coffee table

- 65" 4K UHD LED TV
- Naim Uniti Atom audio system with speakers (2) and subwoofer
- Panoramic windows including opening portholes
- Electric roman blinds and manual sheer roller blinds to hull windows
- Dimmable LED overhead and concealed lighting (24v) with scene selection
- Individual berth lights
- 220/240v outlets (4)
- USB charging points (4)
- Fitted carpet

EN-SUITE BATHROOM

- Twin washbasins and counter top in thermoformed solid surface
- Mirror
- Storage lockers
- Separate compartment with toilet
- Shower compartment with automatic pump out
- Extractor fan
- Window with opening porthole
- Manual tension venetian blind
- LED overhead and concealed lighting (24V)
- Bathroom accessories

- Marble/granite/quartz to floor and specified bulkheads

AFT STATEROOM

- Large double bed with bedside tables and drawers below
- Dressing area with full length mirror, hanging, shelf and drawer storage
- Built-in safe
- Starboard dressing table with integrated mirror, chair, storage drawers and cupboards
- Portside seating area with sofa and storage below and coffee table
- 55" 4K UHD LED TV
- Naim Uniti Atom audio system with speakers (2) and subwoofer
- Panoramic windows including opening portholes
- Electric roman blinds to hull windows, with out-board manual sheer roller blind
- Dimmable LED overhead and concealed 24v lighting with scene selection
- Individual berth lights
- 220/240v outlets (4)
- USB charging points (4)
- Fitted carpet

EN-SUITE BATHROOM

- Twin washbasin and counter top in thermoformed solid surface
- Mirror
- Storage lockers
- Separate compartment with toilet and option of bidet
- Shower compartment with automatic pump out
- Extractor fan
- Window with opening porthole
- Manual tension venetian blind
- LED overhead and concealed lighting (24v)
- Bathroom accessories
- Marble/granite/quartz to floor and specified bulkheads

FORWARD STATEROOM

- Large double bed with drawers below
- Walk-in wardrobe with shelves
- Dressing table with chair
- Mirror
- Storage lockers
- 43" UHD LED TV
- Naim Uniti Atom audio system with ceiling mounted Focal 100 ICW6 speakers (2)
- Windows with opening portholes

- Electric roman blinds to hull windows
- Dimmable LED overhead and concealed lighting (24v) with scene selection
- Individual berth lights
- 220/240v outlets (2)
- USB charging points (2)
- Fitted carpet

EN-SUITE BATHROOM

- Washbasin and counter top in thermoformed solid surface
- Mirror
- Storage lockers
- Shower compartment with automatic pump out
- Extractor fan
- Window with opening porthole
- Manual tension venetian blind
- LED overhead and concealed lighting (24v)
- Bathroom accessories
- Marble/granite/quartz flooring

STARBOARD GUEST CABIN

- Two single beds with drawers below (with option of double bed conversion)
- Bedside table
- Wardrobe with shelves

- Mirror
- Storage lockers
- Window with opening portholes
- Electric roman blind to hull window
- Dimmable LED overhead and concealed (24v) lighting with scene selection
- Individual berth lights
- Optional pullman berth
- 220/240v outlets (1)
- USB charging point (2)
- Fitted carpet

EN-SUITE BATHROOM

- Washbasin and counter top in thermoformed solid surface
- Mirror
- Storage lockers
- Shower compartment with automatic pump out
- Extractor fan
- Window with opening porthole
- Manual tension venetian blind
- LED overhead and concealed lighting (24v)
- Bathroom accessories
- Marble/granite/quartz flooring

PORT GUEST CABIN

- Two single beds with drawers below (with option of double bed conversion)
- Bedside table
- Wardrobe with shelves
- Mirror
- Storage lockers
- Window with opening portholes
- Electric roman blind to hull window
- Deck hatch
- Dimmable LED overhead and concealed 24v lighting with scene selection
- Individual berth lights
- Optional pullman berth
- 220/240v outlets (1)
- USB charging points (2)
- Fitted carpet

EN-SUITE BATHROOM

- Washbasin and counter top in thermoformed solid surface
- Mirror
- Storage lockers
- Shower compartment with automatic pump out
- Extractor fan
- Window with opening porthole

- Manual tension venetian blind
- LED overhead and concealed lighting (24v)
- Bathroom accessories
- Marble/granite/quartz flooring

LOWER ACCOMMODATION LOBBY

- Linen cupboard below companionway stairs
- Space for optional washer/dryer below companionway stairs
- Dimmable LED overhead and concealed lighting (24v) with scene selection
- Fitted carpet

CREW QUARTERS

- Standard transom configuration is a transom garage with Captain's double cabin and en-suite, second crew bunk cabin, aft bathroom, crew mess and dining area.
- Optional transom configuration is a beach club with Captain's double cabin (with en-suite), crew bunk cabin, central bathroom, and aft beach club/dinette.
- All lower crew furniture is in white finish, with solid surface Carrera White (gloss finish) bathroom vanity unit tops and solid surface Koko White (satin finish) bathroom floors (non-

slip flooring

(satin finish)

CAPTAIN'S CABIN

- Double berth with storage below
- Wardrobe with shelf
- Mirror
- Storage lockers
- Opening porthole and venetian blind
- Emergency deck hatch access to cockpit
- LED overhead lighting (24v)
- Individual berth light
- 220/240v outlets (1)
- USB charging points (2)
- Fitted carpet

CAPTAIN'S EN-SUITE

- Washbasin with Carrera White (gloss finish)
solid surface counter top
- Mirror
- Storage lockers
- Shower compartment with automatic pump out
- Extractor fan
- Porthole with venetian blind
- LED overhead lighting (24v)
- Bathroom accessories
- Solid surface flooring in Koko White

CREW CABIN

- Single bunk beds (2)
- Wardrobe with shelf
- Mirror
- Storage lockers
- Opening porthole and venetian blind
- LED overhead lighting (24v)
- Individual berth light
- 220/240v outlets (2)
- USB charging points (2)
- Fitted carpet

CREW BATHROOM

- Washbasin with Carrera White (gloss finish)
solid surface counter top
- Mirror
- Storage lockers
- Shower compartment with automatic pump out
- Extractor fan
- LED overhead lighting (24v)
- Bathroom accessories
- Solid surface flooring in Koko white (satin finish)

CREW AREA

- Access from port side deck (also transom door with optional beach club)
- Access to engine room
- Storage space, cupboards and lockers
- Dinette with table
- Crew mess with microwave with grill, sink, refrigerator and waste bin
- Solid surface counter top in Ice Crystal (satin finish)
- Washing machine and separate tumble dryer
- LED overhead lighting (24v)
- Non-slip flooring

POWER AND DRIVE SYSTEMS

- High volume air intakes
- Engine room extractor fan with electronic time delay
- Engine exhaust silencers and water-cooled exhausts
- Engine beds integrally moulded with hull for strength and vibration absorption
- Forward and aft engine room bulkheads integrally bonded including acoustafoam layers
- Engines flexibly mounted

- Automatic fire extinguisher with remote override control
- Automatic and manual bilge pumps
- Propeller shafts produced from Marinemet
- 5-bladed propellers in nickel aluminium bronze
- High speed balanced rudders
- Cathodic protection for sterngear
- Sterngear, engines, fuel tank fillers, etc all electrically bonded
- Engine room lighting
- Engine room access from port side deck via crew area and from cockpit deck
- Power-assisted electro-hydraulic steering system
- Electronic engine and gear shift controls
- Bow thruster with dual-station controls (Sleipner 550kgf)
- Fresh water supply point in engine room
- Dripless self-aligning shaft seals

ELECTRICAL SYSTEMS

24 Volt:

- 4 x heavy duty batteries for engine starting
- 6 x heavy duty auxiliary batteries
- Battery link facility with remote control at helm position

- Both battery banks are charged using a voltage sensitive relay that parallels both battery banks when a charging source is present
- 1 x 100 amp charger, 1x 100 amp-3500W charger/inverter & 1x 25amp charger (for generator battery).
- Remote battery isolator control switches at main switch panel position
- Circuit breakers on all circuits
- 24v to 12v converters for certain navigation and radio circuits
- Galvanic isolation system
- CCTV system with camera in aft cockpit and fixed cameras in engine room (2) linked to Böning system

220/240 Volt:

- European specification: 2 x 40kW @ 50Hz Onan diesel generators in own sound shields, water cooled and with specially silenced exhaust systems and with remote operation from main control panel
- USA specification: 2 x 40kW @ 60Hz Onan diesel generators in own sound shields, water cooled and with specially silenced exhaust systems and with remote operation from main

control panel

- Three phase shore inlet (380v-415v / 42kVa @50Hz) with Glendinning cablemaster (15m/ 50ft) and a single-phase shore power inlet (220-240v / 15kVa @ 50Hz. Both shore supports with isolation transformers. (US Spec single phase 2 x 100 amp @ 60Hz)
- Shore power/generator change over control operated from main control panel
- Polarity check system
- Earth leakage safety trip, circuit breakers on all circuits
- Power points (240v) in all cabins and living areas, helm position and galley
- 240v shaver points in washrooms
- 3kW immersion heater for fresh water (2)

FUEL SYSTEM

- Main fuel tank with fuel polishing transfer system to day tank giving a total 3,040 gal / 3,650 US gal / 13,818l of fuel capacity (forward fuel bunker tank 4,866 l and main fuel bunker tank 8,008l plus day fuel tank 944l)
- Fuel fillers to port and starboard
- High capacity duplex fuel filters/water traps with integral changeover valves and water

- sensors connected to alarms at helm position
- Remote fuel isolation controls in cockpit locker for main engines and generators
- Fuel gauges at helm position

AIR CONDITIONING SYSTEM

- Air conditioning/heating reverse cycle 300,000 BTU fan capacity with 216,000 BTU chiller capacity suitable for temperatures to 40°C (tropical)
- Windscreen demist facility
- Outlets in all areas

WATER SYSTEM

- Water tanks giving 1,865l capacity plus 205l hot water calorifier
- Automatic water pump with filter
- Water level gauge
- Deck filler
- Pump circuit breaker at main switch panel
- Electric freshwater toilet system linked to 720l holding tank, content gauge and low noise electric overboard discharge, with macerator backup system as well as dockside discharge system
- Grey water to take waste water from sinks/

showers, washing machine(s) and dishwasher

BILGE PUMPS

- Automatic/manual override electric bilge pumps in engine room, rudder area, forward accommodation, crew area and chain locker
- High capacity manual bilge system with suction points in the same areas
- Electric bilge pumps have controls and warning lights with audible alarm at helm position

EXTINGUISHERS / FIRE CONTROL SYSTEMS

- Automatic engine room fire extinguisher system (with manual override) and warning system at helm position providing automatic shutdown of engines, generators and ventilation fans
- Manually operated engine room air shutoff system
- Hand operated fire extinguishers in all guest cabins, galley, crew quarters and flybridge

OTHER STANDARD EQUIPMENT

- Ensign staff
- Fenders (8)
- Mooring warps (4)

- First-aid kit
- Set of towels (10 large, 10 hand)
- Quilted bed covers supplied to all cabins (except crew cabins)
- Complete set of Lucrezia cut crystal glassware (12 settings consisting of tumbler, highball and wine glasses)
- Set of Sous Le Soleil crockery (10 settings consisting of plate, cake plate, dessert plate, bowl, cup and saucer)
- Set of stainless steel cutlery (10 settings of David Mellor "Paris" cutlery 7 pieces)
- Tool kit
- Boat hook
- Owner's manual and engine manual
- Ship's document case
- Black mesh windscreen covers
- Dynamat applied in the following locations
- Crews aft engine room bulkhead
- Crew deck head
- Forward main deck owner's/dining area deck head

FINISHES

- Teak-laid decks to all external deck areas (including flybridge)

- Timber floor (V groove planked) to galley and wheelhouse as standard (wheelhouse in Newport oak as standard)
- Furniture in choice of Alba Oak, Rovere Oak in satin lacquer finish as standard. Silver Oak or Walnut with satin or gloss lacquer finishes available as an option
- Marble, quartz or granite floors in all bathroom suites in guest accommodation (including day head)
- Thermo-formed solid surface wash basins and counter tops in all bathroom suites and day head
- Galley counter top in granite or quartz as standard (some options carry additional premiums)
- Choice of high-quality carpets and fabrics from extensive range
- Curtains, blinds or sunscreens to all windows and portholes (except pantograph doors and wheelhouse)
- Crew cabins have fitted carpet, crew bathrooms have solid surface floors and counter tops
- Non-slip flooring to crew mess and passageway



Y 85



The new Y85 is classically Princess. The refined full length hull glazing compliments the latest Y Class styling, encompassing an interior sanctuary within. Organic, elegant forms frequent each area of the yacht, illustrating the unique capabilities of our craftspeople.

The elongated main deck offers ample entertaining spaces, from the large aft cockpit area available in a range of configurations including a central cockpit table or convertible seating arrangement, through to the saloon's circular dining area to seat eight guests. The flexible galley arrangement allows for the utmost privacy for guests with the crew able to move discretely around the yacht.





Below, four cabins are flooded with light from the sweeping full length hull glazing, showcasing the luxurious materials and fixtures selected by the Princess Design Studio.

With twin MAN V12 engines propelling her to a top speed of up to 31 knots, the Y85 cruises past fellow contemporaries without looking back. Unmissable, the new Y85 is unmistakably Princess.



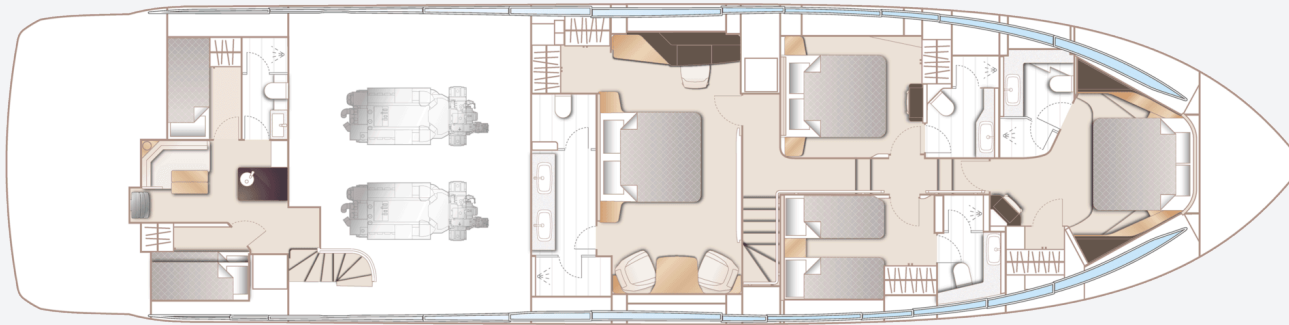
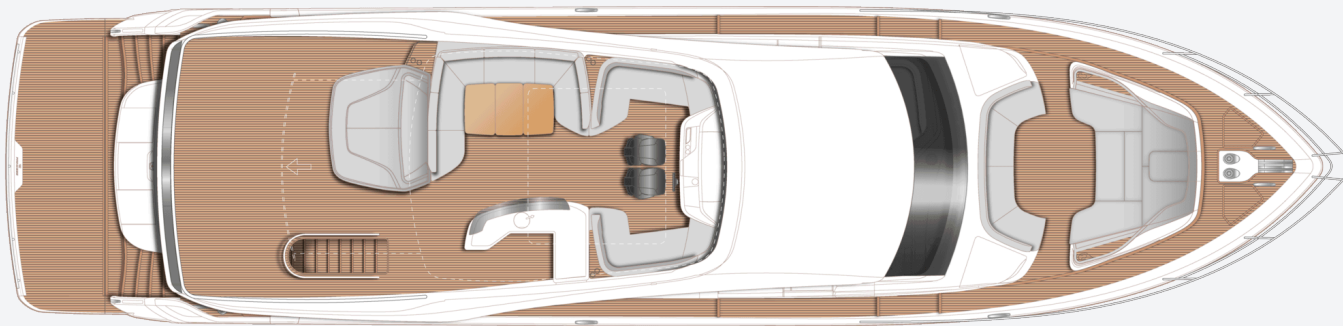


EXPERIENCE THE Y85





Y85
SPECIFICATION



PRINCIPAL DIMENSIONS

Length overall (incl. pulpit)	86ft 0in (26.2m)
Length overall (excl. pulpit)	84ft 6in (25.75m)
Beam	20ft 8in (6.03m)
Draft (full load)	6ft 2in (1.89m)
Displacement (half load)	75,972kg (167,490lbs)*
Fuel capacity	2,406 gal/2,890 US gal/10,940l
Water capacity (excl. calorifier)	285 gal/342 US gal/1,295l

ENGINES

Twin MAN V12 (2 x 1,900mhp)	Speed range: 29-31 knots†
------------------------------------	------------------------------

FULL SPECIFICATION

DECK FITTINGS

- Teak-laid transom platform, cockpit deck, flybridge, flybridge stairway, side decks and foredeck walkthrough
- Reversible hydraulic anchor winches with foredeck, main helm and flybridge controls
- Stemhead roller with manual anchor launch and retrieve
- Twin anchor system incorporating a primary 80kg galvanised claw anchor with 100m of 14mm galvanised chain and a secondary 50kg Galvanised Claw anchor with 70m of 14mm galvanised chain
- Twin electric sternline mooring winches
- Deck hatch access to chain locker
- Bow rope stowage locker
- Freshwater deck/anchor wash (with both fore and aft deck outlets)
- Stainless steel bow and stern fairleads
- Stainless steel bow, stern and spring cleats (2 pairs)
- Stainless steel pulpit and guard rails
- Stainless steel coachroof and flybridge

handrails

- Foredeck escape hatch
- Foredeck U-shaped seating area
- Foredeck sunbathing area with integrated adjustable teak headrests and storage
- Twin coachroof lockers for storage of fenders, ropes and cushions
- PVC rubbing band with stainless steel insert
- LED deck level lighting
- Full set of IMCO navigation lights
- Riding light
- Twin beam searchlight with dual station remote controls
- Loudhailer
- Stern docking lights
- Twin electric horn
- Fuel and water fillers

AFT COCKPIT AND BATHING PLATFORM

- Self-draining
- Upholstered U-shaped seating
- Folding teak table
- LED overhead and deck level lighting

- Stainless steel handrails
- Remote control 4.4m telescopic passerelle with folding handrails
- Watertight pantograph doors giving direct access from starboard side deck and transom to crew cabin /engine room
- Rope storage lockers
- Locker containing remote fuel cocks, manual bilge pump with valve chest and manual controls for automatic fire extinguishers
- Integral stairway to flybridge with teak step treads
- Twin transom gates leading to bathing platform
- Electro-hydraulic raise/lower teak laid bathing platform (550kg SWL)
- Retractable bathing ladder (manual) in side of hydraulic platform
- Transom access to lazarette
- Transom steps to access stern from bathing platform when in lowered position
- Keyway plates and sliders to enable later fitting of dinghy chocks
- Hot and cold transom shower

- 220/240v shore support inlets
- Cockpit canvas cover

WHEELHOUSE

- Leather upholstered new style helm seats with electric fore and aft adjustment for helmsman
- Leather upholstered navigator's seat with manual fore and aft adjustment
- U-shaped seating area to port with table
- Instrument console with LED display incorporating engine instruments, fuel gauges, alarms and rudder position indicator
- Dual station instruments and controls at Flybridge and Lower Helm Positions:
 - power-assisted electro-hydraulic steering
 - adjustable steering wheel
 - high-speed magnetic compass
 - electronic engine controls
 - trim tab controls with indicators
 - bow thruster control
 - hydraulic anchor winch remote control
 - colour radar (with scanner) and GPS/chartploter (twin displays at lower helm)
 - autopilot
 - speed and distance log
 - echo sounder with alarm

- VHF with DSC R/T with intercom
- remote control searchlight
- horn button
- Intercom to flybridge (through VHF handset)
- Automatic fog horn with loudhailer
- Chart storage
- Drinks holders
- Toughened glass screen (clear for night vision) with windscreen de-mist system
- Windscreen wipers with freshwater windscreen wash
- Black mesh sunscreens
- Bilge pump controls with visual pump running warnings
- 24v and 240v electrical control panel
- Riding light, helm and navigation light control switches
- USB charging points (2)
- LED overhead lighting (24v) and night lighting
- Pantograph helmsman's door to starboard side deck
- Electric drop window to port
- Timber flooring (V groove planked)

FLYBRIDGE

- Instrument consoles with dual station controls

and LED display incorporating engine instruments, fuel gauges, alarms and rudder position indicator

- Helm position with hydraulically raised instrument console
- Power assisted electro-hydraulic steering with adjustable wheel
- Audible and visual alarm for bilge pumps
- Engine room fire extinguisher warning system
- Twin adjustable new style helm seats
- Port and starboard forward-facing L shaped seating
- Large U-shaped upholstered seating
- Wetbar with double barbecue, sink, drawer refrigerator, waste bin and storage
- Sunbed aft with storage below
- Naim Uniti Atom audio system with waterproof speakers (2)
- Clear view hatch to aft cockpit
- Wind deflector screens
- Stainless steel handrails with glass balustrade and teak capping to aft end of flybridge
- Liferaft stowage
- LED deck level lighting
- GRP radar arch
- Twin matching whip aerials for VHF R/T and

radio

- Console and seat covers
- Optional crane (550kg SWL)
- Optional GRP hardtop with/without electric rotating louvered opening section or glass panels (or optional folding bimini with electro-hydraulic operation)

DECK SALOON

- Twin L-shaped sofas to port with storage below
- Coffee table
- Bruton pouf
- Two-seater sofa to starboard
- Storage units
- TV on rise and fall (55")
- Naim Uniti Atom audio system with ceiling mounted speakers (4)
- Triple stainless steel framed sliding door to aft cockpit
- Electric roller sheer blinds to outboard windows
- Manual curtains on wave track to doors
- LED overhead and concealed lighting (24v)
- 220/240v outlets (4)
- USB charging points (2)
- Fitted carpet

DINING AREA

- Expandable dining table
- Dining chairs (8)
- Bookcase on starboard side
- Furniture unit with bottle and glass storage on port side
- Refrigerator
- Full height panoramic window
- Electric roller sheer blinds to forward starboard window
- Manual curtains on wave track to panoramic window
- LED overhead and concealed lighting (24v)
- Stairway to lower accommodation
- Fitted carpet

GALLEY

- Galley unit counter tops in choice of granite or quartz
- Open bar/servery layout with powered electric screen to fully enclose galley and sliding door
- 4-zone induction hob
- Extractor fan
- Combination microwave/convection oven with grill
- Twin-bowl stainless steel sink with mixer tap

- Chopping board
- Full height refrigerator/deep freezer
- Dishwasher
- Icemaker
- Waste bin
- Drawers and storage cupboards
- Electric roller blinds to window
- Pantograph door to port side deck
- LED overhead and task lighting (24v)
- 220/240v outlets (4)
- Timber flooring (V groove planked)

DAY HEAD

- Electric freshwater toilet
- Wash hand basin and vanity top in thermoformed solid surface
- Storage cupboard
- Manual tension venetian blind
- Marble/granite/quartz floor

ACCOMODATION

- All cabins and bathrooms feature opening portholes (except port bathroom) and air conditioning outlets
- All cabins feature 220/240v power points
- All en-suites feature 240v shaver points

OWNER'S STATEROOM LOBBY

- Storage space for optional washer/dryer or wine cooler
- LED overhead and concealed lighting (24v)
- Fitted carpet

OWNER'S STATEROOM

- Large double bed with drawers below
- Twin bedside tables
- Dressing area with wardrobes and storage
- Built in safe
- Dressing table with chair (doubles as additional dining chair) to port
- Mirror
- Occasional table with seats fore and aft to starboard
- Storage lockers and drawers
- TV (55")
- Naim Uniti Atom audio system with speakers (2) and subwoofer
- Electric roman blinds and manual sheer roller blinds to hull windows
- Panoramic windows including opening portholes
- LED overhead and concealed lighting (24v)
- Individual berth lights

- 220/240v outlets (6)
- USB charging points (2)
- Fitted carpet

EN-SUITE BATHROOM

- Twin wash basins and vanity top in thermoformed solid surface
- Mirror
- Storage lockers
- Separate compartment with toilet and option of bidet
- Shower compartment with automatic pump out
- Extractor fan
- Heated towel rail
- Window with opening porthole
- Manual tension venetian blind
- LED overhead and concealed lighting (24v)
- Bathroom accessories
- Marble/granite /quartz to floor and specified bulkheads

FORWARD STATEROOM

- Large double bed with drawers below
- Walk-in wardrobe with shelves
- Dressing table with stool
- Mirror

- Storage lockers
- TV (32")
- Naim Uniti Atom sound system, paired with ceiling mounted speakers (2)
- Windows with opening portholes with electric roman blinds
- Deck hatch
- LED overhead and concealed lighting (24v)
- Individual berth lights
- 220/240v outlets (2)
- USB charging points (2)
- Fitted carpet

EN-SUITE BATHROOM

- Wash basin and vanity top in thermoformed solid surface
- Mirror
- Storage lockers
- Shower compartment with automatic pump out
- Extractor fan
- Window with opening porthole
- Manual tension venetian blind
- LED overhead and concealed lighting (24v)
- Bathroom accessories
- Marble/granite/quartz flooring and specified bulkhead

STARBOARD GUEST CABIN

- Two single beds with drawers below (with option of double bed conversion)
- Bedside table
- Wardrobe with shelves
- Mirror
- Storage lockers
- Window with opening portholes
- Electric roman blinds
- LED overhead and concealed lighting (24v)
- Individual berth lights
- 220/240v outlets (2)
- USB charging points (2)
- Fitted carpet

EN-SUITE BATHROOM

- Wash basin and vanity top in thermoformed solid surface
- Mirror
- Storage lockers
- Shower compartment with automatic pump out
- Extractor fan
- Window with opening porthole
- Manual tension venetian blind
- LED overhead and concealed lighting (24v)
- Bathroom accessories

- Marble/granite/quartz flooring

PORT GUEST CABIN

- Large double bed with drawers
- Twin bedside tables
- Dressing table with stool
- Wardrobe with shelves
- Mirror
- Storage lockers
- Window with opening portholes
- Electric roman blinds
- LED overhead and concealed lighting (24v)
- Individual berth lights
- 220/240v outlets (2)
- USB charging points (2)
- Fitted carpet

EN-SUITE BATHROOM

- Wash basin and vanity top in thermoformed solid surface
- Mirror
- Storage lockers
- Shower compartment with automatic pump out
- Extractor fan
- Window with opening porthole
- Manual tension venetian blind

- LED overhead and concealed lighting (24v)
- Bathroom accessories
- Marble/granite/quartz flooring

CREW QUARTERS

- All lower deck crew furniture is in white laminate finish, with white solid surface bathroom unit vanity tops and bathroom floors

CAPTAIN'S CABIN

- Single bed with storage below (option of additional berth above)
- Wardrobe with shelf
- Mirror
- Storage lockers
- Opening porthole and venetian blind
- LED overhead lighting (24v)
- Individual berth light
- 220/240v outlets (2)
- USB charging points (2)
- Fitted carpet

CREW CABIN

- Two single beds with storage below
- Wardrobe with shelf
- Mirror

- Storage lockers
- Opening porthole and venetian blind
- LED overhead lighting (24v)
- Individual berth light
- 220/240v outlets (2)
- USB charging points (2)
- Fitted carpet

CREW BATHROOM

- Wash basin with solid surface vanity top
- Mirror
- Storage lockers
- Shower compartment with automatic pump out
- Extractor fan
- LED overhead lighting (24v)
- Bathroom accessories
- Solid Surface flooring

UTILITY/CREW AREA

- Access from transom door and starboard side deck
- Access to engine room
- Storage space, cupboards and lockers
- Dinette sofa with folding table
- Crew mess with microwave, sink, refrigerator and waste bin

- Solid surface counter top
- Washing machine and separate tumble dryer
- LED overhead lighting (24v)
- Non-slip safety flooring

POWER AND DRIVE SYSTEMS

- Engine room soundproofed
- High volume air intakes
- Engine room extractor fan with electronic time delay
- Engine exhaust silencers and water-cooled exhausts
- Engine beds integrally moulded with hull for strength and vibration absorption
- Forward and aft engine room bulkheads integrally bonded
- Engines flexibly mounted
- Automatic fire extinguisher with remote override control
- Automatic and manual bilge pumps
- Propeller shafts in Marinemet
- 5-bladed propellers in nickel aluminium bronze
- High speed balanced rudders
- Cathodic protection for sterngear
- Sterngear, engines, fuel tank fillers all electrically bonded

- Engine room lighting
- Engine room access from crew area and from starboard side deck and transom via crew area
- Power-assisted electro-hydraulic steering system
- Trim tabs with indicators
- Electronic engine and gear shift controls
- Bow thruster (340 kgF/749 lbF) with dual-station controls
- Fresh water supply point in engine room
- Dripless self-aligning shaft seals

ELECTRICAL SYSTEMS

24 Volt:

- 4 x heavy-duty batteries for engine starting and windlass operation
- 6 x heavy-duty auxiliary batteries
- Battery link facility with remote control at helm position
- Both battery banks are charged using a voltage sensitive relay that parallels both battery banks when a charging source is present
- 1x 80-amp 24v battery chargers and 1x combination 3.5kW inverter/100-amp charger and 1x 25-amp charger (for generator battery)
- Remote battery master switches with control

- switch at main switch panel
- Circuit breakers on all circuits
- 24v to 12v voltage dropper for certain navigation and radio circuits

220/240 Volt:

- 27kW generator in own sound shield with water-cooled and specially silenced exhaust
- 2 x 63-amp shore support inlet
- Generator/shore support change-over switch
- Polarity check system
- Earth leakage safety trip
- Circuit breakers on all circuits
- Power points (240v) in: owner's stateroom, guest cabins, galley and saloon area
- Shaver points in all bathrooms

FUEL SYSTEM

- Total fuel capacity is 2,406 gal/2,890 US gal/ 10,940l comprising 8,040l main tank and 2 x 1,450l day tanks
- Fuel polishing transfer system to day tanks with water and vacuum sensors connected to alarms at both helms
- Fuel fillers to port and starboard
- High-capacity duplex fuel filters/water traps

- with integral changeover valves and water sensors connected to alarms at both helm positions
- Remote fuel isolation controls in cockpit locker for main engines and generators
- Dual station fuel gauges on helm consoles with additional back up mechanical sight gauge fitted to all tanks and mounted in engine room

WATER SYSTEM

- Water tanks totalling 285 gal/343 US gal/1,295l plus 45 gal/54 US gal/205l hot water calorifier
- 240v immersion heater
- Automatic water pump with filter
- Main circuit breaker at switch panel
- Water level gauge
- Deck filler
- Electric freshwater toilet system with 132 gal/ 158 US gal/600l holding tank, content gauge and low noise electric overboard discharge, with macerator backup system as well as dockside discharge system

AIR CONDITIONING

- Air conditioning/heating reverse cycle (204,000 BTU fan capacity with 144,000 BTU

- chiller capacity) suitable for temperatures to 40oC (tropical)
- Windscreen demist facility
- Outlets in all areas

BILGE PUMPS

- Automatic/manual override electric bilge pumps in engine room (2), rudder area and forward accommodation (8 in all)
- High-capacity manual bilge pump with valve system and suction points in same areas
- Electric bilge pumps have controls and warning lights at main helm and warning light with audible alarm at flybridge helm

EXTINGUISHERS / FIRE CONTROL SYSTEMS

- Automatic/manual override fire extinguishers in engine room with warning system at both helm positions
- Hand operated fire extinguishers (9) in owner's stateroom, forward stateroom, port and starboard guest cabins, crew cabins (2), crew mess, galley and wheelhouse

OTHER STANDARD EQUIPMENT

- Ensign staff

- Fenders (8)
- Mooring warps (4)
- Boathook
- First Aid kit
- Tool kit
- Owner's manual and engine manual
- Quilted bedspreads supplied to all cabins (except crew cabin)
- Set of towels (8 large, 8 hand)
- Complete set of Lucrezia crystal glassware (8 settings consisting of tumbler, highball and wine glasses)
- Set of Sous Le Soleil crockery (8 settings consisting of plate, cake plate, dessert plate, bowl, cup & saucer)
- Set of stainless steel cutlery (8 settings of David Mellor "Paris" cutlery 7 pieces)
- Ship's document case
- Anchor winch back up handle
- and helm
- Furniture in choice of Alba oak or Rovere oak in satin finish. Silver Oak or Walnut with satin or gloss lacquer finishes available as an option.
- Marble/granite/quartz floors in all bathroom suites
- Thermoformed solid surface wash basins and vanity tops in all guest bathrooms
- Galley counter top in granite/quartz
- Choice of high-quality carpet and fabrics from extensive range
- Curtains, blinds or sunscreens to all windows and portholes (excludes pantograph doors and wheelhouse)
- Crew cabins have fitted carpet, crew bathroom floor, vanity top and counter tops in solid surface
- Non-slip flooring to crew mess

FINISHES

- Teak-laid decks to transom platform, cockpit deck, steps to side decks, side decks and foredeck walkthrough, steps to flybridge and flybridge
- Timber-laid floor (V groove planked) to galley



Y80



The versatility of the Y80 sets it apart from its contemporaries. Offering a generous beam, the Y80 provides significant volume for an 80-foot motor yacht whilst retaining elegant styling and design both inside and out.

Her flybridge offers relaxed seating and dining areas combined with a fully equipped wetbar. Owners' can choose to specify the flybridge layout to their requirements with the option of a crane for a tender hidden within the large sunpad, free standing sun loungers or a spa bath.

The foredeck has been designed to offer a secluded escape to while-away an afternoon or an elegant entertaining space to sip cocktails with guests. A conversationalist seating area can easily accommodate 10 people, with adaptable forward and aft facing U-shaped seating which can convert to offer a spacious sunpad.





The main deck offers an uninterrupted flow through from the cockpit to the helm featuring vast windows along the saloon to experience the surrounding panoramic views. For owner's who prefer a more private experience, optional partitions to the galley and wheelhouse are available.

Below deck, four en-suite cabins sleep eight supported by crew quarters.





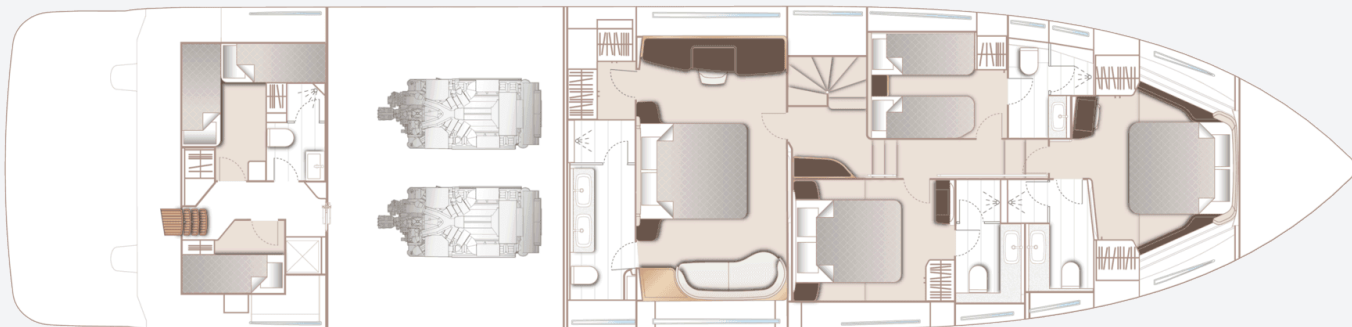
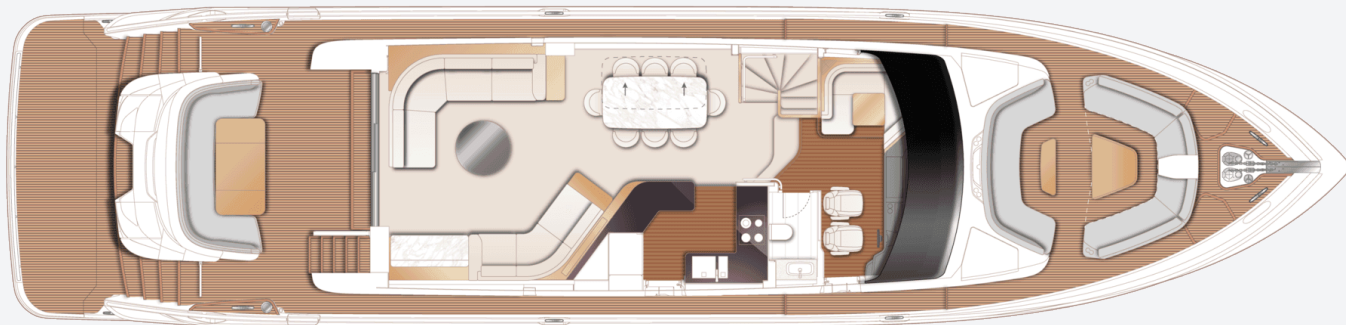
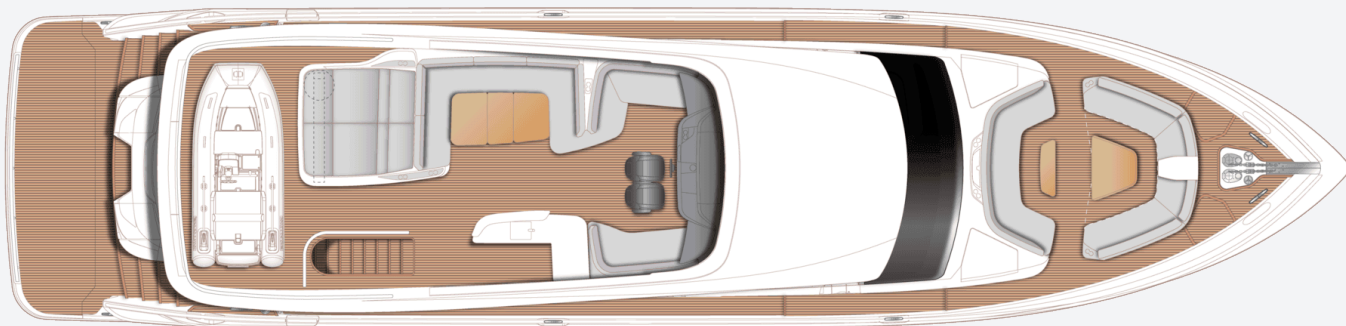


EXPERIENCE THE Y80





Y80
SPECIFICATION



PRINCIPAL DIMENSIONS

Length overall (incl. pulpit)	83ft 8in (25.50m)
Length overall (excl. pulpit)	82ft 5in (25.12m)
Beam	19ft 11in (6.07m)
Displacement (half load)	66,026kg (145,562lbs)*
Fuel capacity	1,540 gal/1,849 US gal/7,000l
Water capacity (excl. calorifier)	308 gal/370 US gal/1,400l

ENGINES

Twin MAN V12 (2 x 1,800mhp)	Speed range: 30-32 knots†
------------------------------------	------------------------------

FULL SPECIFICATION

DECK FITTINGS

- 6mm teak-laid decking to transom platform, transom steps, cockpit deck, stairway to flybridge, side decks, foredeck & flybridge areas
- Princess logo in bathing platform teak
- Reversible hydraulic anchor winches with foredeck, main helm and flybridge controls
- Stemhead roller with automatic anchor launch and retrieve
- Twin anchor system incorporating:
 - Primary anchor - 80kg galvanised Lewmar Claw anchor, with stainless steel Lewmar swivel and 100m of 14mm galvanised anchor chain
 - Secondary anchor - 50kg galvanised Lewmar Claw anchor, with stainless steel Lewmar swivel and 70m of 14mm galvanised anchor chain
- Deck chain stoppers
- Twin electric stern line mooring winches
- Deck hatch access to chain locker, rope locker and engine room
- Freshwater deck/anchor wash (with both fore and aft deck outlets)
- Stainless steel bow and stern fairleads

- Stainless-steel bow spring cleats (1 pair, port & starboard)
- Stainless-steel stern spring cleats (1 pair, port & starboard)
- Stainless-steel guard rails to foredeck
- Stainless steel handrails to main deck side decks
- Foredeck escape hatch
- Foredeck forward-facing U-shaped seating area with optional coffee table
- Foredeck aft-facing U-shaped seating area with storage unit and standard coffee table
- Twin coach roof lockers for storage of fenders, ropes and cushions
- PVC rubbing band with stainless-steel insert
- LED deck level lighting
- Full set of IMCO navigation lights
- Riding light
- Twin beam searchlight with remote controls
- Stern docking lights
- Twin electric horns
- Fuel and water fillers
- Loudhailer

- Ensign socket and pole
- Holding tank dockside discharge connection

AFT COCKPIT AND BATHING PLATFORM

- Self-draining
- Upholstered U-shaped seating with storage below
- Teak folding dining table with drink holders (4)
- LED overhead and deck level lighting
- Stainless-steel oval handrails
- Optional stern docking (third) station controls portside including engine controls, follow on tiller, thruster controls and emergency engine stop
- Remote control 4.5m telescopic passerelle with automatic folding handrails (1.2m overhang)
- Watertight pantograph door giving access from bathing platform into crew area/engine room
- Engine room to cockpit escape hatch
- Stern lazarette
- Optional storage and charging for optional Seabob's (2 max) in cockpit seating. (To accommodate F5/F5S/F5SR models)

- Starboard locker containing remote fuel cocks, manual bilge pump with valve chest and manual controls for automatic fire extinguishers
- Integral stairway to flybridge with teak step treads
- Twin transom gates leading to bathing platform
- Electro-hydraulic teak laid raise/lower bathing platform (550kg SWL) with Princess logo in bathing platform teak
- Retractable bathing ladder (manual) in side of bathing platform
- Hot and cold transom shower
- 220/240v shore support inlet
- Canvas cockpit cover
- Swim platform transom seat in teak
- Dinghy chock system stainless steel keyway plates for later fitting of tender on bathing platform
- Illuminated crown logo on transom

LOWER HELM

- Leather upholstered seat with manual height adjustment and manual fore and aft adjustment.
- Fixed navigator's seat
- Helm seats incorporate manual fold down foot rest

- U-shaped companion seating to port with dining-height table
- Instrument console with display incorporating engine instruments, optional CCTV, fuel gauges, alarms and rudder position indicator
- Dual station instrument and controls console at wheelhouse/flybridge:
 - power-assisted electro-hydraulic steering (Seastar)
 - adjustable Pininfarina steering wheel
 - high-speed magnetic compass
 - electronic engine controls
 - bow thruster control
 - hydraulic anchor winch remote control
 - colour radar (with scanner) and GPS/chart plotter (twin 15.6" displays)
 - 1x 15" Böning display
 - audible and visual alarm engine warning system
 - autopilot
 - speed and distance log
 - echo sounder with alarm
 - VHF with DSC R/T with intercom
 - remote control dual searchlight
 - horn button (to operate twin electric horns)
 - audible and visual alarm for bilge pumps

(via Böning)

- engine room fire extinguisher warning system
- Automatic fog horn with loudhailer
- Chart storage
- Drink holders (2)
- Toughened glass screen (clear for night vision) with windscreen de-mist system
- Windscreen wipers with freshwater windscreen wash
- Black mesh sunscreens
- Bilge pump controls with visual pump running warnings
- 24v and 240v electrical control panel
- Riding light, helm and navigation light control switches
- Dimmable LED overhead/concealed lighting (24V) with night lighting & scene selection
- 220/240v outlets (1)
- USB charging points (4) (2x USB-A and 2x USB-C)
- Watertight pantograph door giving direct access from starboard side deck
- Electric drop window to port
- V-groove planked timber-laid flooring

FLYBRIDGE (AND UPPER HELM)

- Dual station instruments and controls (see lower helm position)
- Helm position
- Drinks holders (2)
- Port forward L-shaped seating (with infill panel and cushion)
- Large portside U-shaped upholstered seating
- Aft sunpad with drinks holders (2) (with storage forward and storage aft suitable for optional crane)
- Starboard forward seating/individual sunpad
- Dining table (teak, triple panel with removable central section)
- Wetbar with single electric barbecue/100 litre refrigerator/sink/storage/bin
- Naim Uniti Atom audio system with JL Audio M6-650X-L waterproof speakers (2)
- Clear view hatch to aft cockpit (in-house)
- Wind deflector screens
- Access stairway to aft cockpit
- Stainless-steel oval handrails with glass balustrade & teak capping to aft of flybridge deck
- Life raft stowage in baskets on flybridge aft rails
- LED overhead and deck level lighting

- Wireless waterproof phone charger
- GRP forward facing radar arch
- Radar mast
- Twin matching whip aerials for VHF R/T and radio
- Covers to console/exterior furniture
- USB charging points (2) (1x USB-A and 1x USB-C)
- Optional crane (500kg SWL) – space to accommodate Williams Sportjet 395
- Optional GRP hardtop with additional option of either electrically opening louvered section or glass panel

DECK SALOON

- Large L-shaped curved sofa to portside, with storage below
- Sofa to starboard with storage below
- Coffee table
- 55" LED TV on rise and fall.
- Naim Uniti Atom audio system. Paired with Focal 100 ICW6 speakers (2) and Focal Cub Evo subwoofer
- Panoramic tinted toughened glass windows port and starboard
- Triple stainless-steel framed cockpit doors

- Dimmable LED overhead/concealed lighting (24V) with scene selection
- 220/240v outlets (2)
- USB charging points (4) (2x USB-A and 2x USB-C)
- Onboard ethernet router & 4G internet modem
- Sideboard unit with integrated drinks refrigerator, glassware storage & top down bottle storage
- Crockery storage (beneath starboard sofa)
- Manual sheer roller blinds to all outboard windows
- Manual curtains on wave track to aft patio doors, stowed to port
- Fitted carpet

DINING AREA

- Electric sliding dining table with 8 dining chairs
- Full-height window to port
- Manual sheer roller blind to window
- Dimmable LED overhead/ concealed (24V) with scene selection
- Access stairway to lower accommodation
- Fitted carpet

GALLEY

- Granite/quartz counter top
- Galley units in HPL
- Miele 4-zone induction hob
- Hob extractor fan
- Miele combination convection oven with grill/microwave
- Sub-zero single full height refrigeration units with deep freeze drawers
- Slimline dishwasher
- 1.5 bowl stainless-steel sink with mixer tap
- Chopping board & storage
- Waste bin
- High and low-level storage cupboards and drawers
- Cutlery storage
- Watertight pantograph access door to starboard side deck
- 220/240v power outlets (4)
- Dimmable LED overhead & task lighting (24V)
- Manual roller blinds to windows
- V-groove planked timber-laid flooring
- Optional internal sliding door and up/down bulkhead mechanism

DAY HEAD

- Electric freshwater toilet
- Wash basin and vanity top in thermoformed Solid Surface
- Storage cupboard
- Manual tension Venetian blind
- Solid Surface flooring

ACCOMMODATION

- All cabins and bathrooms feature opening portholes and air conditioning
- All cabins feature 220/240v power points
- All en-suites feature 240v shaver points

MASTER STATEROOM

- Large double bed with bedside tables and drawers below
- Dressing area with full length mirror, hanging, shelf and drawer storage
- Built-in safe
- Port side dressing table with integrated mirror, chair, storage drawers and cupboards
- Starboard side sofa with storage drawers to forward bulkhead (As per X80)
- 55" LED TV
- Naim Uniti Atom audio system. Paired with

Focal 100 ICW6 speakers (2) and Focal Cub Evo subwoofer

- Panoramic windows including opening portholes
- Manual roman blinds to hull windows
- Dimmable LED overhead/concealed lighting (24V) with scene selection
- 220/240v outlets (2)
- USB charging points (4) (2x USB-A and 2x USB-C)
- Fitted carpet

EN-SUITE BATHROOM

- Twin wash basins and vanity top in thermoformed Solid Surface
- Mirror
- Storage lockers
- Electric freshwater Toilet and option of combination bidet
- Shower compartment with automatic pump out
- Extractor fan
- Heated towel rail
- Window with opening porthole
- Manual tension Venetian blind
- LED overhead and concealed lighting (24V)
- Bathroom accessories

- Solid Surface flooring, with synthetic teak accents applied to feature shower bulkheads and shower floor

FORWARD STATEROOM

- Large double bed with bedside tables and drawers below
- Built-in safe
- Twin double wardrobes
- Port side dressing table with integrated mirror, stool & storage drawers
- 43" LED TV
- Naim Uniti Atom audio system. Paired with Focal 100 ICW6 speakers (2)
- Panoramic windows including opening portholes
- Manual Roman blinds to hull windows
- Dimmable LED overhead/concealed lighting (24V) with scene selection
- 220/240v outlets (2)
- USB charging points (4) (2x USB-A and 2x USB-C)
- Fitted carpet
- En-suite bathroom
- Wash basin and vanity top in thermoformed Solid Surface

- Mirror
- Storage lockers
- Electric freshwater Toilet
- Shower compartment with automatic pump out
- Extractor fan
- Window with opening porthole
- Manual tension Venetian blind
- LED overhead and concealed lighting (24V)
- Bathroom accessories
- Solid Surface flooring, with synthetic teak accents applied to feature shower bulkheads and shower floor

STARBOARD GUEST CABIN

- Double bed with drawers below
- Bedside table
- Dressing table with stool
- Wardrobe with shelves
- Mirror
- Storage lockers
- Window with opening portholes
- Manual Roman blinds to hull window
- Dimmable LED overhead/concealed lighting (24V) with scene selection
- Individual berth lights
- 220/240v outlets (1)

- USB charging points (2) (1x USB-A and 1x USB-C)
- Fitted carpet
- En-suite bathroom
- Electric freshwater toilet
- Wash basin and vanity top in thermoformed Solid Surface
- Mirror
- Storage lockers
- Shower compartment with automatic pump out
- Extractor fan
- Windows with opening porthole
- Manual tension Venetian blind
- LED overhead and concealed lighting (24V)
- Bathroom accessories
- Solid Surface flooring, with synthetic teak accents applied to feature shower bulkheads and shower floor

PORT GUEST CABIN

- Two single beds with drawers below
- Bedside table
- Wardrobe with shelves
- Mirror
- Storage lockers
- Window with opening portholes

- Manual Roman blinds to hull window
- Dimmable LED overhead/concealed lighting (24V) with scene selection
- Individual berth lights
- 220/240v outlets (1)
- USB charging points (2) (1x USB-A and 1x USB-C)
- Fitted carpet
- En-suite bathroom
- Electric freshwater toilet
- Wash basin and vanity top in thermoformed Solid Surface
- Mirror
- Storage lockers
- Shower compartment with automatic pump out
- Extractor fan
- Windows with opening porthole
- Manual tension Venetian blind
- LED overhead and concealed lighting (24V)
- Bathroom accessories
- Solid Surface flooring, with synthetic teak accents applied to feature shower bulkheads and shower floor

LOBBY / PASSAGEWAY AREA

- Linen cupboard below companionway stairs
- Top-loading storage unit outboard in window side liner
- Sideboard with mirror above
- Space for optional combination washer/dryer below companionway stairs
- LED overhead/concealed lighting (24V)
- Fitted carpet
- Manual roller blind to window

CREW QUARTERS

- N.B. All lower crew furniture is in gloss white laminate, with Koko White Solid Surface (gloss finish) bathroom vanity tops and Koko White Solid Surface (satin finish) bathroom floors

CREW CABIN PORT

- Twin single beds with storage below
- Wardrobe with shelf
- Mirror
- Storage lockers
- Opening portholes (2, port and aft)
- Mono-command Venetian blinds
- LED overhead lighting (24V)
- Individual berth light

- 220/240v outlets (1)
- USB charging points (2) (1x USB-A and 1x USB-C)
- Non-slip safety flooring

CREW CABIN STARBOARD

- Single bed with storage below
- Wardrobe
- Mirror
- Storage locker
- Opening porthole
- Mono-command Venetian blind
- LED overhead lighting (24V)
- Individual berth light
- 220/240v outlets (1)
- USB charging points (2) (1x USB-A and 1x USB-C)
- Non-slip safety flooring

CREW BATHROOM

- Electric freshwater toilet
- Wash basin with Koko White (gloss finish) Solid Surface vanity top
- Mirror
- Storage lockers
- Shower compartment with automatic pump out

- Extractor fan
- LED overhead lighting (24V)
- Bathroom accessories
- Solid Surface flooring in Koko white (satin finish)

CREW AREA

- Access from transom door
- Access to engine room
- Washing machine and separate tumble dryer (stacked)
- LED overhead lighting (24V)
- Non-slip safety flooring

POWER AND DRIVE SYSTEMS

- Forward and aft engine room bulkheads and engine room deck head to be integrally bonded including insulation with acoustafoam layers (Ref: Development Standard DS876)
- High volume air intakes
- Engine room extractor fan with electronic time delay
- Engine exhaust silencers and water-cooled exhausts
- Engines flexibly mounted
- Automatic fire extinguisher with remote

- override control
- Automatic and manual bilge pumps
- Propeller shafts in Marinemet
- 5-bladed propellers in nickel aluminium bronze
- High speed balanced rudders
- Cathodic protection for stern gear
- Stern gear, engines, fuel tank fillers, etc all electrically bonded
- LED Engine room lighting
- Engine room access from transom (via crew area) and cockpit deck hatch
- Power-assisted electro-hydraulic steering system
- Electronic engine and gear shift controls
- Bow thruster with dual-station controls (310 kgF)
- Fresh water supply point in engine room
- Dripless self-aligning shaft seals

ELECTRICAL SYSTEMS

24 Volt:

- 4 x heavy duty batteries for engine starting
- 6 x heavy duty auxiliary batteries
- 2x heavy duty batteries for standard generators
- Battery link facility with remote control at helm position

- Both battery banks are charged using a voltage sensitive relay that parallels both battery banks when a charging source is present
- 1 x 100A charger, 1x 100A-3500W charger/inverter & 1x 10A charger (for generator batteries)
- Remote battery isolator control switches at main switch panel position
- Circuit breakers on all circuits
- 24v to 12v converters for certain navigation and radio circuits
- 24v to 240v/50Hz inverter for saloon a/v and galley fridge
- Galvanic isolation system

220/240 Volt:

- European specification: Standard 2x 27kW @ 50Hz diesel generators (with optional upgrades up to 2 x 28kW @ 50Hz diesel generators) in own sound shields, water cooled and with specially silenced exhaust systems and with remote operation from main control panel
- USA specification: Standard 2x 29kW @ 60Hz diesel generators (with optional upgrades up to 2 x 32kW @ 60Hz diesel generators) in own sound shields, water cooled and with specially

silenced exhaust systems and with remote operation from main control panel

- 220/240v shore power inlet (2x 63amp single phase)
- Shore power/generator change over control operated from main control panel
- Polarity check system
- Earth leakage safety trip, circuit breakers on all circuits
- Power points (240v) in all cabins and living areas, helm position and galley
- 240v shaver points in washrooms
- 2kW immersion heaters for fresh water (2)

FUEL SYSTEM

- Main fuel tank with a total of 7,000 litres fuel capacity. (8,800 litres total if long range fuel tank is specified)
- Fuel fillers to port and starboard
- High capacity duplex fuel filters/water traps with integral changeover valves and water sensors connected to alarms at helm position
- Remote fuel isolation controls in cockpit locker for main engines and generators
- Fuel gauges at helm position

AIR CONDITIONING SYSTEM

- Air Conditioning/heating reverse cycle (chilled water)
- 186,000 BTU fan capacity with 144,000 BTU chiller capacity suitable for temperatures to 40°C (tropical), incorporating a windscreen demist facility.
- Outlets in all areas

WATER SYSTEM

- Fresh water tanks giving 1400 litres capacity plus 200 litres hot water calorifier
- Automatic water pump with filter (80l/min)
- Water level gauge
- Deck filler
- Pump control at helm positions
- Electric freshwater toilet system linked to 540 litres black water tank, content gauge and low noise electric overboard discharge, with macerator backup system as well as dockside discharge system
- As standard, sinks, showers, washing machine(s) and dishwasher will discharge directly overboard (where applicable)
- Optional grey water tank with 1400 litre capacity, to take waste water from sinks/

showers, washing machine(s) and dishwasher. (Note: Not available when optional extended range fuel tank is selected)

BILGE PUMPS

- Automatic/manual override electric bilge pumps in engine room, rudder area and forward accommodation
- High capacity manual bilge system with suction points in the same areas
- Electric bilge pumps have controls and warning lights with audible alarm at helm positions

EXTINGUISHERS / FIRE CONTROL SYSTEMS

- Automatic engine room fire extinguisher system (with manual override) and warning system at helm positions providing automatic shutdown of engines, generators and ventilation fans
- Hand operated fire extinguishers in all guest cabins, galley, crew quarters and flybridge
- Automatic under helm fire extinguisher at lower helm

OTHER STANDARD EQUIPMENT

- Ensign staff
- Fenders (8)
- Mooring warps (4)
- First Aid kit
- Set of towels (8 large, 8 hand)
- Bed cover supplied to all cabins (except crew cabin)
- Complete set of Lucrezia crystal glassware (8 settings consisting of tumbler, highball and wine glasses)
- Set of Sous Le Soleil crockery (8 settings consisting of plate, cake plate, dessert plate, bowl, cup & saucer)
- Set of stainless-steel cutlery (8 settings of David Mellor "Paris" cutlery 7 pieces)
- Tool kit
- Boat hook
- Owner's manual and engine manual
- Ship's document case

FINISHES

- Teak-laid decks to all external deck areas (including flybridge)
- V-groove planked timber-laid floor to galley and wheelhouse
- Furniture in choice of Alba oak, Rovere oak in satin finish as standard. Silver Oak or walnut with satin or gloss finishes available as an option.
- Solid Surface floors in all bathroom suites in guest accommodation (including day head)
- Thermoformed Solid Surface wash basin vanity tops in all bathroom suites and day head
- Synthetic teak accents applied to feature shower bulkheads and shower floor
- Galley counter top in granite or quartz
- Choice of high-quality carpets and fabrics from extensive range
- Exterior upholstery to be selected from the Comfort Exterior fabric range (no contrast)
- Curtains or blinds to all windows and portholes (excludes lower helm and pantograph doors)
- All lower crew furniture is in gloss white laminate, with Solid Surface bathroom floors and vanity tops
- Crew cabins to have non-slip safety flooring

- Non-slip safety flooring to crew mess and passageway

Please note the right is reserved to add modify or delete from this preliminary specification.

Y72



Finished to high standards throughout, the all-new Y72s design features are comparable to those of larger Y Class yachts. Her spacious saloon has a sociable layout with a bar area and open plan galley, complemented by a multi-zone Naim audio system.





Forward on the lower deck, six guests can enjoy three beautifully appointed guest cabins filled with light from the full-length hull glazing. A dedicated staircase leads from the main deck to the full-beam owner's stateroom amidships, via a private lobby area connected to the saloon. The sophisticated owner's stateroom is furnished with a sofa, dressing area and vanity desk wrapped and stitched in Livorno Stone leather for a contemporary finish. Luxurious surroundings exude from the owner's stateroom with architecturally inspired feature panels, fresh linen wallcoverings and a bronze tint mirror to compliment the scheme. An additional en-suite cabin with two single beds is positioned aft for crew or occasional guests.

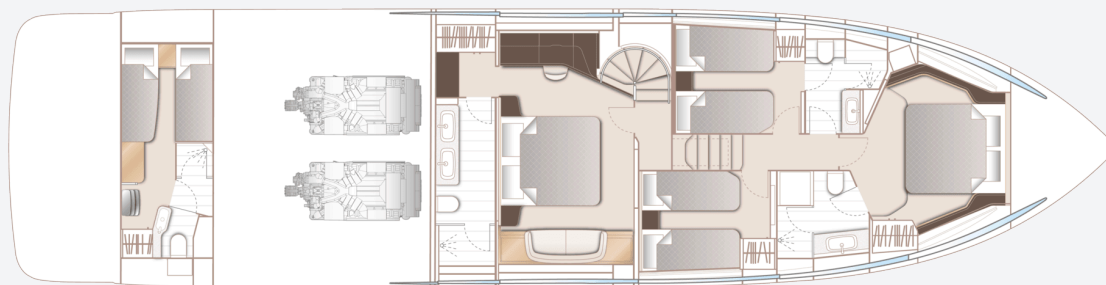
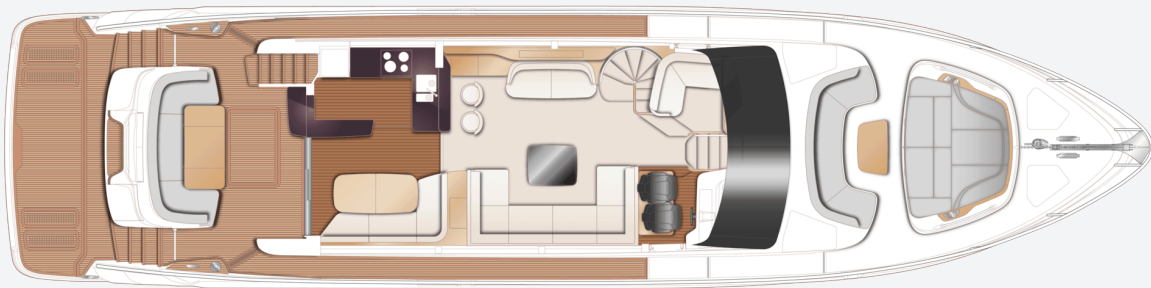
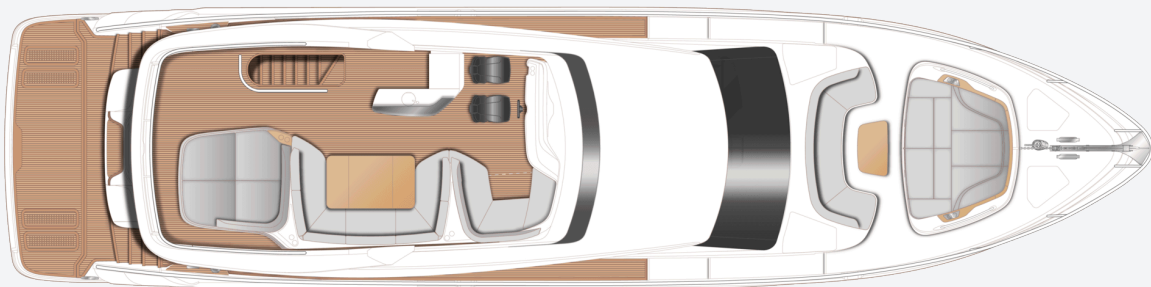








Y72
SPECIFICATION



PRINCIPAL DIMENSIONS

Length overall (incl. pulpit)	74ft 9in (22.80m)
Length overall (excl. pulpit)	73ft 2in (22.31m)
Beam	17ft 11in (5.45m)
Draft. (full load)	5ft 8in (1.72m)
Displacement (half load)	53,300kg (117,506lbs)*
Fuel capacity	990 gal/1,189 US gal/4,500l
Water capacity (excl. calorifier)	184 gal/221 US gal/836l

ENGINES

Twin MAN V12 (2 x 1,650hp)	Speed range: 32-34 knots*
-----------------------------------	------------------------------

FULL SPECIFICATION

DECK FITTINGS

- Teak-laid transom platform, cockpit deck, flybridge, flybridge stairway and steps to side deck
- Reversible electric anchor winch with foredeck, main helm and flybridge controls
- Stemhead roller with automatic anchor launch and retrieve
- Self-stowing 50kg/110lbs Delta anchor with 60m of 12mm chain
- Twin electric sternline mooring winches
- Deck hatch access to chain locker
- Bow rope stowage locker
- Freshwater deck/anchor wash
- Stainless steel bow and stern fairleads
- Stainless steel bow, stern and spring cleats (2 pairs)
- Stainless steel pulpit and guard rails
- Stainless steel coachroof and flybridge handrails
- Foredeck escape hatch
- Foredeck U-shaped seating area
- Foredeck sunbathing area, integrated

- adjustable headrests with aft facing seat conversion
- Twin coachroof lockers for storage of fenders, ropes and covers
- PVC rubbing band with stainless steel insert
- LED deck level lighting integrated into scene selection lighting control
- Illuminated crown logo on transom
- Full set of IMCO navigation lights
- Riding light
- Stern docking light (mounted on flybridge overhang)
- Twin beam searchlight with dual station remote controls
- Twin electric horns
- Loudhailer
- Fuel and water fillers

COCKPIT AND BATHING PLATFORM

- Self-draining
- Upholstered U-shaped seating
- Folding teak dining table
- LED overhead and deck level lighting integrated

- into scene selection lighting control
- Stainless steel handrails
- Pantograph door to aft crew cabin
- Lockable gas strut assisted hatch to engine room/lazarette
- Liferaft stowage locker
- Rope storage lockers
- Locker containing remote fuel cocks, manual bilge pump with valve chest and manual controls for automatic fire extinguishers
- Integral stairway to flybridge with teak step treads
- Twin transom gates leading to bathing platform
- Electro-hydraulic raise/lower teak laid bathing platform (450kg SWL)
- Retractable bathing ladder (manual) in side of hydraulic platform
- Swim platform transom seat in teak
- Transom steps to access stern from bathing platform when in lowered position
- Dinghy chock system (keyway plates and sliders fitted to bathing platform)
- Transom storage locker capable of storing 2 x

SEABOB with space to port side to facilitate SEABOB chargers

- Hot and cold transom shower
- 220/240v shore support inlet
- Cockpit canvas cover

FLYBRIDGE

- Instrument console with dual station controls and LED display incorporating engine instruments, fuel gages, alarms and rudder position
- Power assisted electro hydraulic steering with adjustable wheel
- Twin helm seats with fore and aft adjustment for helmsman
- Starboard L-shaped seating (converts to sunpad)
- Large U-shaped upholstered seating
- Teak table with removable central section
- Wet-bar with barbecue, sink, drawer fridge, waste bin and storage
- Sunbed aft with storage below
- Naim Uniti Atom audio unit with JL Audio M6-650X-L waterproof speakers (2)
- Clear view hatch to aft cockpit
- Wind deflector screens

- Stainless steel handrails with glass balustrade and teak capping to aft end of flybridge
- LED deck level lighting integrated into scene selection lighting control
- GRP radar arch
- Twin matching whip aerials for VHF R/T and radio
- Console, table and seat covers
- Optional extended GRP hardtop with/without electric tilting louvered section or with fixed glass panel
- USB charging points (2)

HELM POSITION

- Twin leather helm seats with fore and aft adjustment for helmsman
- Instrument console with LED display incorporating engine instruments, fuel gauges, alarms and rudder position indicator
- Dual station instruments and controls at Flybridge and Lower Helm Positions:
 - power-assisted electro-hydraulic steering
 - adjustable steering wheel
 - high-speed magnetic compass
 - electronic engine controls
 - Bow thruster control

- electric anchor winch remote control
- colour radar (with scanner) and GPS/chartplotter
- autopilot
- speed and distance log
- echo sounder with alarm
- VHF with DSC R/T with intercom
- remote control searchlight
- horn button
- controls for standard trim tabs
- Bönning system integrated with the following functionalities (displayed on separate dedicated display at helm):
 - Engine instrumentation (including fuel levels and fuel flow)
 - Digital boat alarms
 - Scene selection lighting controls
 - AC/DC control and monitoring
- Drinks holders
- Toughened glass screen (clear for night vision) with windscreen demist system
- Windscreen wipers with freshwater windscreen wash
- Black mesh windscreen covers
- Bilge pump controls with visual pump running warnings

- 24v and 240v electrical control panel
- Riding light, helm and navigation light control switches
- USB charging point
- LED overhead lighting (24v) and night lighting integrated into scene selection lighting control
- Pantograph helmsman's door to starboard side deck
- Timber flooring (V groove planked)

SALOON

- U-shaped sofa to starboard
- Coffee table
- Sofa to port
- L-shaped sofa opposite helm area
- Sideboard unit with bottle and glass storage
- Refrigerator
- 55" UHD LED TV on rise and fall
- Naim audio system paired with speakers (2) and subwoofer
- Electric drop window to port
- Manual tension venetian blinds to all windows
- Dimmable LED overhead and concealed lighting (24v) integrated into scene selection lighting control
- Access stairway to lower accommodation

- Separate access stairway to owner's stateroom
- Fitted carpet

DINING AREA

- L-shaped sofa
- Folding dining table
- Occasional dining table stools (2)
- Stainless steel framed sliding bi-fold door to cockpit with integrated hinging window aft of galley
- Venetian blinds to windows and pleated blinds to doors
- Dimmable LED overhead and concealed lighting (24v) integrated into scene selection lighting control
- Timber flooring (V groove planked)

GALLEY

- Galley worktop in choice of quartz
- Bar top to saloon area
- 4-zone ceramic induction hob
- Extractor fan
- Combination microwave/convection oven with grill
- Twin-bowl stainless steel sink with mixer tap
- Chopping board

- Full height refrigerator/deep freeze
- Dishwasher
- Icemaker
- Waste bin
- Drawers and storage cupboards
- Manual tension venetian blinds to window
- LED overhead and task lighting (24v) integrated into scene selection lighting control
- 220/240v outlets (4)
- Timber flooring (V groove planked)

ACCOMMODATION

- All cabins and bathrooms feature opening portholes and air conditioning
- All cabins feature 220/240v power points
- All bathrooms feature electric freshwater toilets and 240v shaver points

OWNER'S STATEROOM LOBBY

- Access stairway to owner's stateroom
- Panoramic window
- Manual tension venetian blind
- Washer/dryer with cupboard above fitted in the forward passageway in the guest accommodation (a separate washer and dryer may be optionally installed in place of the

standard unit)

- LED overhead and concealed lighting (24v) integrated into scene selection lighting control
- Fitted carpet

OWNER'S STATEROOM

- Large double bed with drawers below
- Twin bedside tables
- Dressing area with wardrobes and storage
- Built-in safe
- Dressing table with stool
- Mirror
- Sofa
- Storage lockers and drawers
- 50" UHD LED TV
- Naim audio system paired with speakers (2) and subwoofer
- Panoramic windows including opening portholes
- Manual tension venetian blinds to
- Dimmable LED overhead and concealed lighting (24v) integrated into scene selection lighting control
- Individual berth lights
- 220/240v outlets (2)
- USB charging point

- Fitted carpet

EN-SUITE BATHROOM

- Twin washbasins and worktop in thermoformed solid surface
- Mirror
- Storage lockers
- Shower compartment with automatic pump out
- Extractor fan
- Window with opening porthole
- Manual tension venetian blind
- LED overhead and concealed lighting (24v) integrated into scene selection lighting control
- Bathroom accessories
- Solid surface flooring

FORWARD STATEROOM

- Large double bed with drawers below
- Wardrobe with shelves
- Dressing table
- Mirror
- Storage lockers and drawers
- Window with opening portholes
- Manual tension venetian blind
- Deck hatch
- LED overhead and concealed lighting (24v)

integrated into scene selection lighting control

- Individual berth lights
- 220/240v outlets (4)
- USB charging point
- Fitted carpet

EN-SUITE BATHROOM

- Washbasin and worktop in thermoformed solid surface
- Mirror
- Storage lockers
- Shower compartment with automatic pump out
- Extractor fan
- Window with opening portholes
- Manual tension venetian blind
- LED overhead and concealed lighting (24v) integrated into scene selection lighting control
- Bathroom accessories
- Solid surface flooring

PORT AND STARBOARD GUEST CABINS

- Two single beds with drawers below (with option of double bed conversion)
- Bedside table
- Wardrobe with shelves
- Mirror

- Storage lockers and drawers
- Window with opening portholes
- Manual tension venetian blinds
- LED overhead and concealed lighting (24v) integrated into scene selection lighting control
- Individual berth lights
- 220/240v outlets (2)
- USB charging point
- Fitted carpet

EN-SUITE BATHROOM

- Washbasin and worktop in thermoformed solid surface
- Mirror
- Storage lockers
- Shower compartment with automatic pump out
- Extractor fan
- Window with opening porthole
- Manual tension venetian blind
- LED overhead and concealed lighting (24v) integrated into scene selection lighting control
- Bathroom accessories
- Solid surface flooring
- Day access door from passageway

CREW CABIN

- Two single beds with storage below
- Bedside table
- Wardrobe with shelf
- Mirror
- Storage lockers and drawers
- Transom window with venetian blind
- Opening portlight
- LED overhead lighting (24v)
- Individual berth lights
- 220/240v outlets (2)
- USB charging point
- Standard aft lazarette incorporates overhead lighting, transom window, access hatch with ladder and storage space
- Access to engine room via door

EN-SUITE BATHROOM

- Washbasin with solid surface worktop
- Mirror
- Storage lockers
- Shower compartment with automatic pump out
- Extractor fan
- LED overhead lighting (24v)
- Bathroom accessories
- Non-slip flooring

POWER AND DRIVE SYSTEMS

- Engine room soundproofed
- High volume air intakes
- Engine room extractor fan with electronic time delay
- Engine exhaust silencers and water-cooled exhausts
- Engine beds integrally moulded with hull for strength and vibration absorption
- Forward and aft engine room bulkheads integrally bonded
- Engines flexibly mounted
- Automatic fire extinguisher with remote override control
- Automatic and manual bilge pumps
- Propeller shafts in Marinemet
- 5-bladed propellers in nickel aluminium bronze
- High speed balanced rudders
- Cathodic protection for sterngear
- Sterngear, engines, fuel tanks etc all electrically bonded
- Bow thruster (250kgf/551lbf) with dual-station controls
- Engine room lighting
- Engine room access hatch and ladder
- Engine room door to crew area (via crew head)

- Power-assisted electro-hydraulic steering system
- Electronic engine and gear shift controls
- Fresh water supply point in engine room
- Dripless self-aligning shaft seals

ELECTRICAL SYSTEMS

24 Volt:

- 4 x heavy-duty batteries for engine starting
- 6 x heavy-duty auxiliary batteries
- Battery link facility with remote control at helm position
- Both battery banks are charged using a voltage sensitive relay that parallels both battery banks when a charging source is present
- 1 x 60-amp 24v battery charger and 1x combination 2.6 kW 60-amp inverter charger
- Remote battery master switches with control switch at main switch panel
- Circuit breakers on all circuits
- 12v voltage dropper for certain navigation and radio circuits

220/240 Volt:

- 22.5kW generator in own sound shield with water-cooled and specially silenced exhaust

- Automatic fire extinguisher
- 63-amp shore support inlet
- Generator/shore support change-over switch
- Polarity check system
- Earth leakage safety trip
- Circuit breakers on all circuits
- Power points (240v) in: owner's stateroom, guest cabins, galley and saloon area
- Shaver points in all bathrooms
- Smoke detectors (galley, stateroom, lower lobby and crew area)
- Böning system

AIR CONDITIONING

- Air conditioning/heating reverse cycle 128,000 BTU chiller with 128,000 BTU fan capacity suitable for ambient temperature to 40°C (e.g. Tropical)
- Controls in all cabins and outlets in all areas (includes outlets in bathrooms and crew cabin)
- Standard 22.5kW generator is suitable (this has sufficient capacity for Gyro stabilisers as well as air conditioning)

FUEL SYSTEM

- Fuel tanks (in NS8 marine grade alloy) with

interconnection system giving 990 gal / 1,189 US gal / 4,500l capacity

- Fuel fillers on port and starboard side decks
- High-capacity duplex fuel filters with water traps and change-over valves, water warning sensors connected to warning lights at lower helm
- Remote fuel cocks in cockpit locker
- Fuel gauges at main helm console

WATER SYSTEM

- Water tanks totalling 184 gal / 221 US gal / 836l plus 16 gal / 19 US gal / 73l hot water calorifier
- Water heated by engines and 240v immersion heater
- Automatic water pump with filter
- Main circuit breaker at switch panel
- Water level gauge
- Deck filler
- Electric freshwater toilet system with 88 gal / 106 US gal / 400l holding tank, content gauge and low noise electric overboard discharge, with macerator backup system as well as dockside discharge system

FIRE EXTINGUISHERS

- Automatic/manual override fire extinguishers in engine room
- Hand operated fire extinguishers (7) in owner's stateroom, forward stateroom, port and starboard guest cabins, galley, lower helm position and aft cabin

BILGE PUMPS

- Automatic/manual override electric bilge pumps in engine room (2), rudder area and forward accommodation (6 in all)
- High-capacity manual bilge pump with valve system and suction points in same areas
- Electric bilge pumps have controls and warning lights at main helm and warning light with audible alarm at flybridge helm

OTHER STANDARD EQUIPMENT

- Ensign staff
- Fenders (8)
- Mooring warps (4)
- Boat hook
- First-aid kit
- Tool kit
- Owner's manual and engine manual
- Bed cover supplied to all cabins (except

- optional crew cabin)
- Set of towels (8 large, 8 hand)
- Set of crystal glassware (8 settings consisting of tumbler and wine glasses)
- Set of Princess china (8 settings)
- Set of cutlery (8 settings of David Mellor "Paris" cutlery 7 pieces)
- Ship's document case
- Anchor winch back up handle

FINISHES

- Teak-laid decks to transom platform, steps to flybridge and flybridge
- Timber floor (V groove planked) to galley, dining area and helm
- Furniture in choice of Rovere Oak or Alba Oak in satin finish. Silver Oak or Walnut in satin or gloss finishes available as an option
- Solid surface floors in all bathroom suites
- Thermoformed solid surface wash basin counter tops in all bathroom suites
- Galley worktop in quartz
- Choice of high-quality carpet and upholstery fabric from extensive range
- Blinds or sunscreens to all windows, doors and portholes

- Crew cabin has boat timber furnishings and timber flooring, crew bathroom floor is solid surface with solid surface countertops



SAFEGUARDING YOUR SANCTUARY

Your yacht is your haven, so the wellbeing of you and your family is of upmost importance to us. That's why we offer the option of the 'Princess Lifeline' powered by MedAire. A 24/7 SOS service providing access to medical and security assistance. One phone call connects you to MedAire's team of over 200 global security experts and 80,000 accredited medical providers who can assist you in the event of a medical or travel safety emergency. You can relax on board knowing everything is taken care of.



OUR PARTNERS

Princess is proud to partner with a few exclusive brands who share our vision and brand values, and deliver exceptional experiences to their customers.



To celebrate our 50th anniversary, **SEABOB** created a Limited Edition collection which was the start of a unique relationship with this successful marine brand. The success of our 50th anniversary limited edition SEABOB marked the start of a unique relationship with this successful marine brand. We have since collaborated on a collection of limited edition designs as the perfect complement to your Princess yacht.



As we evolve our technology offering on each and every Princess, our partnership with **NAIM** provides world class audio visual systems that continue to rewrite the audiophile rule book.



Princess was honoured to become the first luxury yacht manufacturer to officially collaborate with **The Marine Conservation Society**. It's our way to support and sustain marine ecology, securing an environment for future generations to discover and explore.



With a shared passion for sustainability and ocean conservation, we recently partnered with **Ecoworks Marine** to help tackle the challenge of creating a more environmentally friendly approach to yacht cleaning. In a first for the industry, Ecoworks Marine have developed their 'Preserve the Living Seas' range, a unique collection of cleaning products that are fully biorenewable, quickly biodegradable and sustainably formulated.



Williams Jet Tenders are our provider of choice, with every Princess yacht designed to accommodate the models in their range.



We are proud partners of the [Salcombe Distilling Company](#). Inspired by the coastal vitality of Salcombe and its shipbuilding heritage, Salcombe Distilling Co. creates exceptional spirits at its waterside distillery on Island Street, Salcombe; one of the world's only distilleries directly accessible by boat. The partnership will see Princess Yachts and Salcombe Distilling Co. collaborate at events around the world.



RECOGNITIONS

Our priority is to be considered the best by our owners, but recognition by independent experts through a number of prestigious awards has given Princess and our craftspeople a tremendous sense of pride.



Oceanway China Yacht Awards

Best of the Year 24-30m Superyacht

Most Popular Award 24-30m

X95

2022

Oceanway China Yacht Awards

Best Layout 60-80ft motor yacht

Y72

2022

Oceanway China Yacht Awards

Best Layout 45-60ft motor yacht

F45

2022

Motor Boat Awards

Best Flybridge up to 60ft

F45

2022

Motor Boat Awards

Best Flybridge over 60ft

Y72

2022

Robb Report

Best of the Best Yacht

X95

2021

IBI Boat Builder Awards

Best Apprenticeship Scheme

Princess Royal Training Award

Apprentice Scheme

2020

World Yachts Trophies

Best Shipyard

Princess Yachts Limited

2019

The Sunday Times Profit Track

100

Best Brand Award

Princess Yachts Limited

2019

Motor Boat Awards

Best Flybridge up to 60ft

F55

2019

Asia Pacific Boating Awards

Best Yacht Design Innovation

R35

2019

IBI Boat Builder Awards

Retail Marketing Initiative

R35 Communications Campaign

2018

World Yachts Trophies - Yachts

France

Best Layout 45-62'

F55

2018

Asia Boating Award

Best Sports cruiser over 55ft

V65

2018

Motor Boat Awards

Sports cruisers over 45ft

S60

2018

Asia Boating Awards

Best Sports cruiser up to 45ft

V40

2017

Motor Boat Awards

Sports cruiser over 45ft

V58

2017

Motor Boat Awards

Flybridge over 55ft

75 Motor Yacht

2017

World Superyacht Awards

Semi-Displacement & Planing Two

Deck Motor Yacht

Antheya 35M

2016

Asia Boating Awards

Best Production Motor Yacht

(15m-24m)

75 Motor Yacht

2016



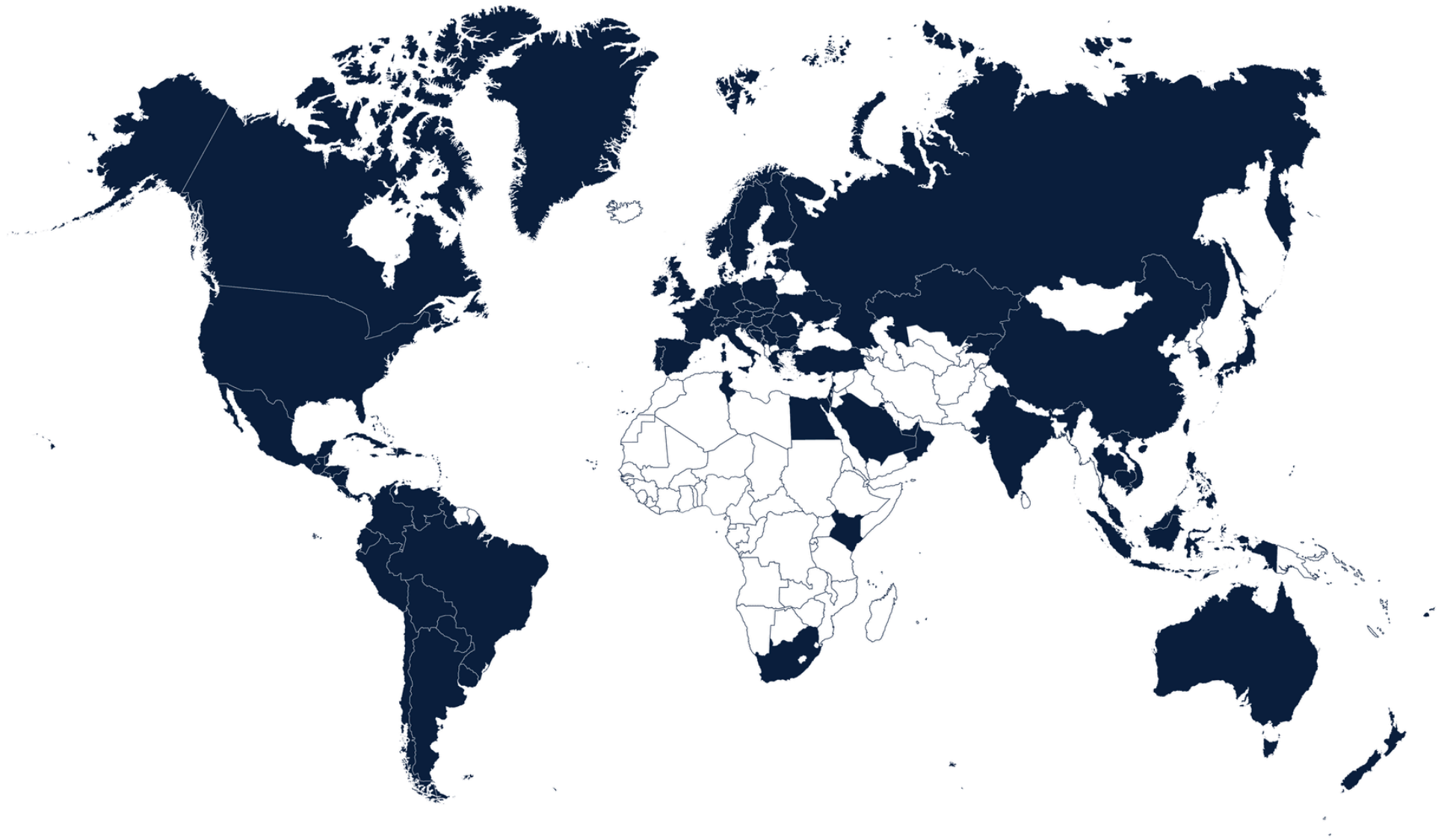
DISTRIBUTOR
NETWORK



With an extensive network of distributors around the globe, we are able to bring you personalised world-class service almost anywhere. We do all that we can to make sure that the process of buying a Princess is yet another exciting aspect of ownership.

Our specialist dealers have years of experience and unparalleled knowledge of our yachts. For more information on any one of the yachts in our range, please contact your local Princess office. Address and contact details can be found on our [**website**](#).

GLOBAL COVERAGE





FURTHER DETAILS

STYLING AND ACCESSORIES
SUPPLIED BY KIND PERMISSION
OF:

Anna New York
Cristal et Bronze
Cub-ar
Diptyque
Gio Bagnara
Luxury Living
Stelton
Staub
Pickett
Zwilling

PHOTOGRAPHY:

Mike Evans
Quin Bisset
George Edwards





Version 1.0

Updated April 30th 2021

* Displacements are calculated with 50% fuel and water with liferaft but with no optional equipment fitted or other gear.

† Maximum speeds will vary depending on cleanliness of hull, condition of sterngear, loading of craft, water and air temperatures, sea conditions and other factors. Speed estimates are therefore given in good faith but without warranty or liability on the part of Princess Yachts Limited. Craft illustrated in this brochure may be fitted with certain optional equipment. Specifications may be changed at any time without notice or liability.

‡ Certain specifications, which vary by model, are upgraded on Princess yachts built for use in North America. Thus, specifications and equipment will vary from the information listed in the brochure for North American Princess yachts (e.g. air-conditioning and an upgraded generator will be included as standard for all North American models and electric cooking facilities will be supplied in place of gas systems). Please consult the USA Specification Brochure for full details regarding the North American specifications for individual models.



THANK YOU

For more information or to find a distributor,
please visit our [website](#).