



FOUNTAIN PAJOT SAMANA 59 / 2022

| € 2,750,000 EX VAT





---

THE YACHT

---





---

THE YACHT

---



---

THE YACHT

---





---

THE YACHT

---





---

THE YACHT

---





---

FLYBRIDGE

---





---

FLYBRIDGE

---





---

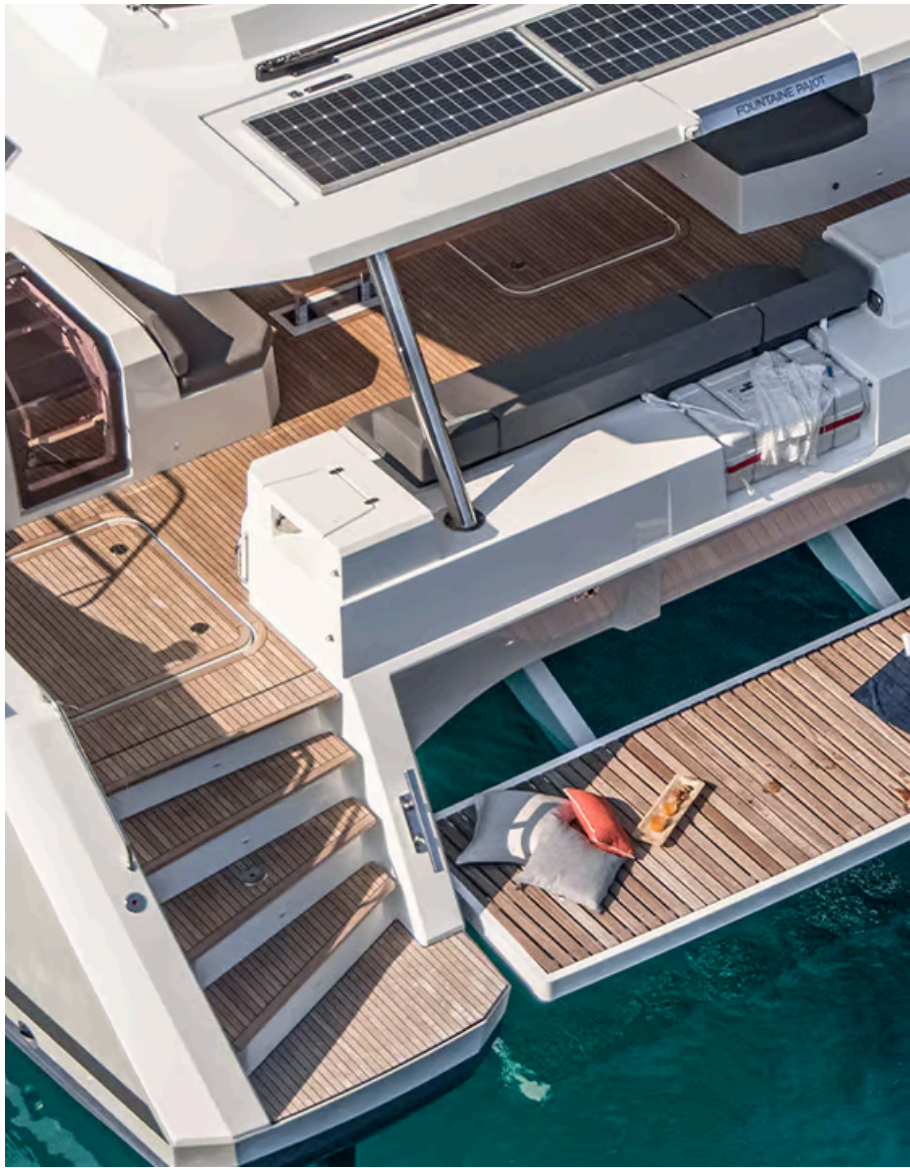
BOW

---









---

STERN

---





---

COCKPIT

---



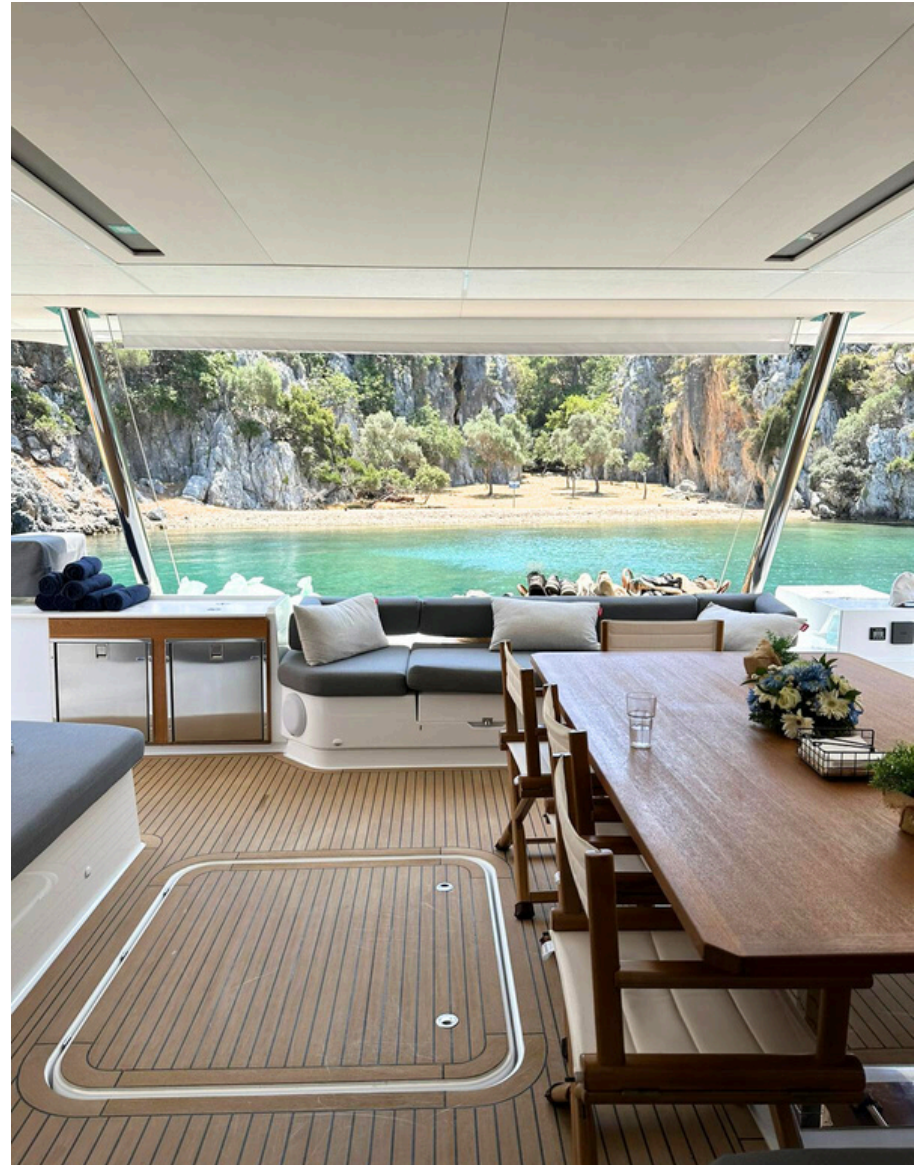


---

COCKPIT

---





---

COCKPIT

---





---

SALOON

---





---

MASTER CABIN

---





---

MASTER CABIN

---



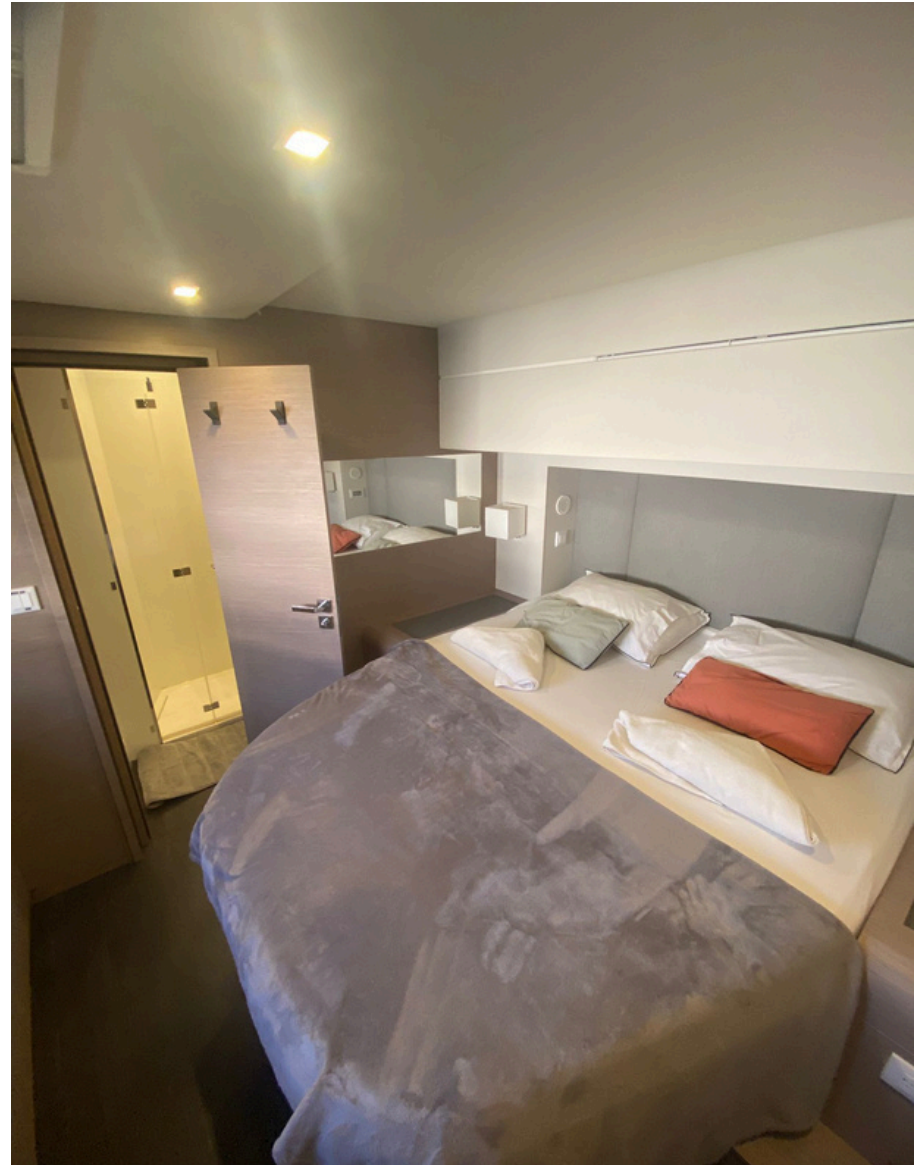


---

GUEST CABIN

---





---

GUEST CABIN

---





---

LAYOUT

---



**SPECIFICATIONS:**

LOA: 17.94 m

Beam: 9.46 m

Draft: 1.65 m

Displacement: 28.2 t

Fresh water tank capacity: 1150 l

Fuel tank capacity: 1200 l

Flag: UK

**PERFORMANCE:****-Engines:**

2 x VOLVO D3 150 Hp

**Engine hours:**

- ·Starboard: 1407 hrs.
- ·Port side: 1406 hrs.
- 

**-Generators:**

- ·1x FISHER PANDA 12 kW (421 hrs.)
- ·1x ONAN 17 kW 220V 50HZ (1223 hrs.)

-VOLVO D3 engine throttle – chart table

-VOLVO D3 engine throttle – cockpit aft port

-1x Bow thruster in starboard hull



## **STANDART EQUIPMENT:**

- Curtains in cabins
- Mooring kit + 6 fenders
- Genoa electrical furler
- CST mainsail full batten
- Lazy jack
- Electrical windlass 2300 W
- 1x Electrical winch for main halyard
- 2x pulpit seats
- Hot/cold water on 1 deck shower
- Dralon protective cover for wheel
- Multiplexage
- VHF mast head antenna prewired
- Lazy bag
- Outdoor cushions
- Interior courtesy lighting
- Exterior courtesy lighting
- 2x Genoa electric winches
- 1x Main sheet electric winch
- Pressurized seawater system (2 outlets)
- Main grid 220V 50HZ or 220 60HZ
- Charger/inverter 5000W/120 A50/60HZ



**EXTERIOR EQUIPMENT:**

- Fixed fly deck Bimini
- Cockpit tent
- Exterior window blinds for saloon
- Teak cockpit table with extension
- Synthetic teak cockpit floor
- Synthetic teak front cockpit
- Synthetic teak front flybridge
- Additional mooring cleats
- 2x cockpit fridges (65 l)
- 1x Fridge on flybridge (65 l)
- Kitchen furniture on flybridge
- Icemaker (cockpit)
- Winter Encloser
- Exterior fresh water (2 outlets)

**INTERIOR EQUIPMENT:**

- Combination locking safe
- Saloon curtains pleated blinds
- Port forepeak fitting out (bed + head)
- Starboard forepeak fitting out (bed + head)
- Handrail in staircase
- Electrical saloon coffee table convertible into dinner table
- Additional electric freshwater pump

**ELECTRONIC + TV + HIFI:**

- 2x aft cameras
- HI-FI video pack for owner's cabin (TV 40'')
- Pack Garmin 3: 2x screens (22'') -helm station + chart table
- Radar
- Smart Link: camera and sensors
- Flybridge Hi-fi + 4x speakers

**APPLIANCES AND COMFORT:**

- Fridge for galley up (220V 130 l)
- Cold storage for galley up (220V 90 l – 5° C)
- Microwave oven (45 l)
- Chief tap in galley
- Dishwasher
- Washer / dryer (220V – 50HZ)
- Mechanical ventilation for all cabins
- Grey water tank
- Full air-conditioning



**EXTRAS:**

- Staysail on electric Furler
- Canoe boom with lazy bag
- 2x rope cutters for 40mm shaft
- Windlass control on helm station
- Tender lift hydraulic platform
- 2x capstans in cockpit
- 2x capstans in front
- Foghorn
- ROCNA ANCHOR 55KG + 80ML 14MM CHAIN
- Covers (seats, winches, tables, tender)
- 2 x underwater lights (front)
- 2x speakers (front cockpit & connected to saloon)
- Furler & gear (GENNAKER)
- Lithium battery pack 30kW (VICTRON SMART)
- Flybridge awning for soft Bimini
- TV antenna for 2 TV + wiring + RCA connection
- Hi-fi Speakers + sub in saloon (BOSE)
- Lift for TV in saloon
- Iridium GO
- Antenna on mast for Iridium GO
- 220V outlets in engine room
- Garmin camera GC14 + support on 2 spreaders
- 3x Solar Panels 400W + 3x Mppt without inox frame
- 5G antenna on mast
- Waterproof socket on flybridge (12V)
- Fans in each cabin (2x saloon, 2x owner's cabin, 1+ 4 in skipper cabin)
- Lightning protection-fore spar dissipater + 2x ground plate and wiring
- Additional water heater (ELEMANT 220V for 75 l)
- FP hooks
- 220V outlets entrance to saloon
- 220V outlet under middle sofa
- Waterproof outlet on port aft VOLVO station (220V)
- LED (dimmer touch) in technical room
- Double USB plug next to Iridium GO
- Radar reflector (ECHOMAX)

**WATER MAKER:**

- Water maker (300 l/h 230V AQUABASE Aruba Modular comfort version)
- Additional water maker (AQUABASE 105 l/h 24V ESW902)

**TENDER & WATER SPORTS**

- Highfield CL420 Hypalon (Orca)-NEW from July 2024
- Sup, foil, wakeboard, diving tank, kneeboard, water ski, 2 biks )



**DISCLAIMER** All speeds, measurements, capacities, consumptions, etc. may be approximate or estimated. Specifications provided for information only. Data was obtained from sources believed to be reliable and is not guaranteed by owner or brokers. Buyer assumes the responsibility to ascertain the correctness of all data contained herein and otherwise provided and must instruct his agent and surveyors to confirm all details for accuracy prior to purchase. Subject to prior sale, price and inventory change, or withdrawal from market without notice.



1 Ha'tzedef St. Herzeliya Marina, Israel 4655201 | WhatsApp. 972-54-3997399  
Tel. 972-9-9513248 | info@aquamarina.co.il | [www.aquamarina.co.il](http://www.aquamarina.co.il)