



PURA VIDA 2021 | € 4,250,000 EX VAT





The Yacht



The Yacht



The Yacht



The Yacht



Portside



Star Board



Stern



Bow Exterior



Bow



Bow



Jacuzzi On Bow



Flybridge



Exterior



Cockpit



Cockpit



Cockpit



Cockpit



Cockpit



Helm Station



Helm Station



Main Saloon



Main Saloon



Main Saloon



Main Saloon



Guest Lobby



Master Cabin



Master Cabin



Master Cabin



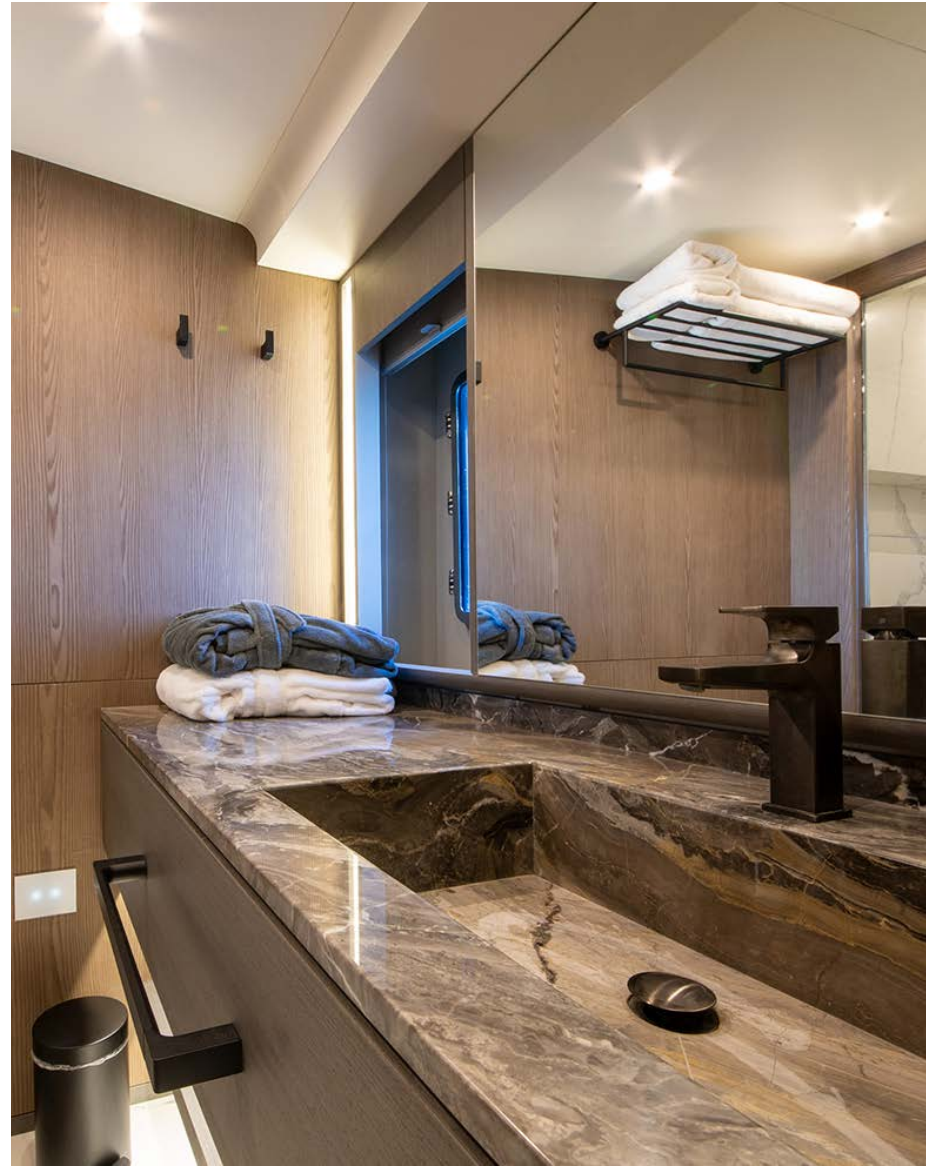
Master Cabin



Master Cabin



Bathroom



Bathroom



VIP Cabin



VIP Cabin



VIP Cabin



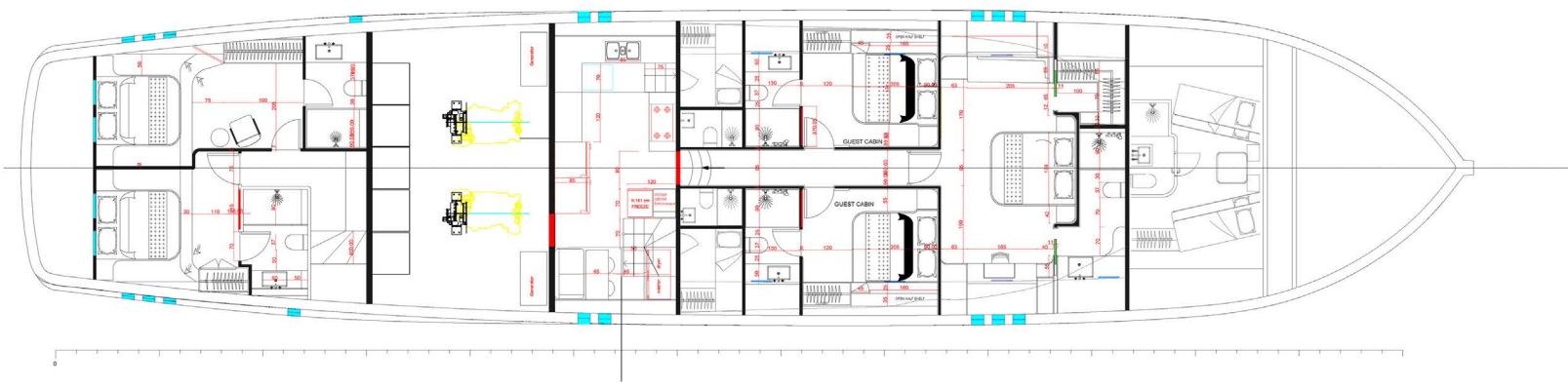
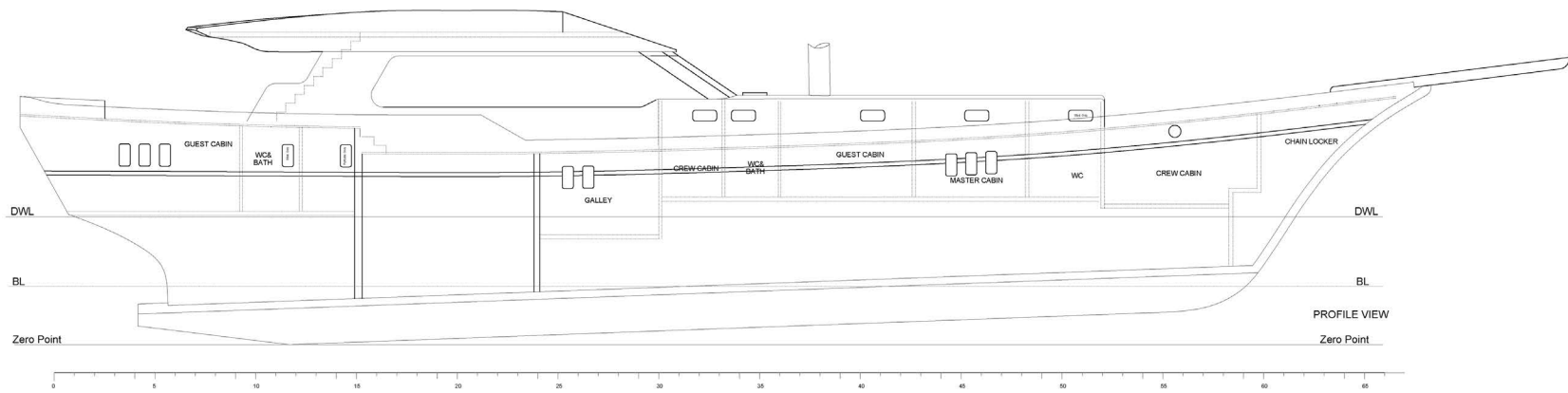
Guest Cabin



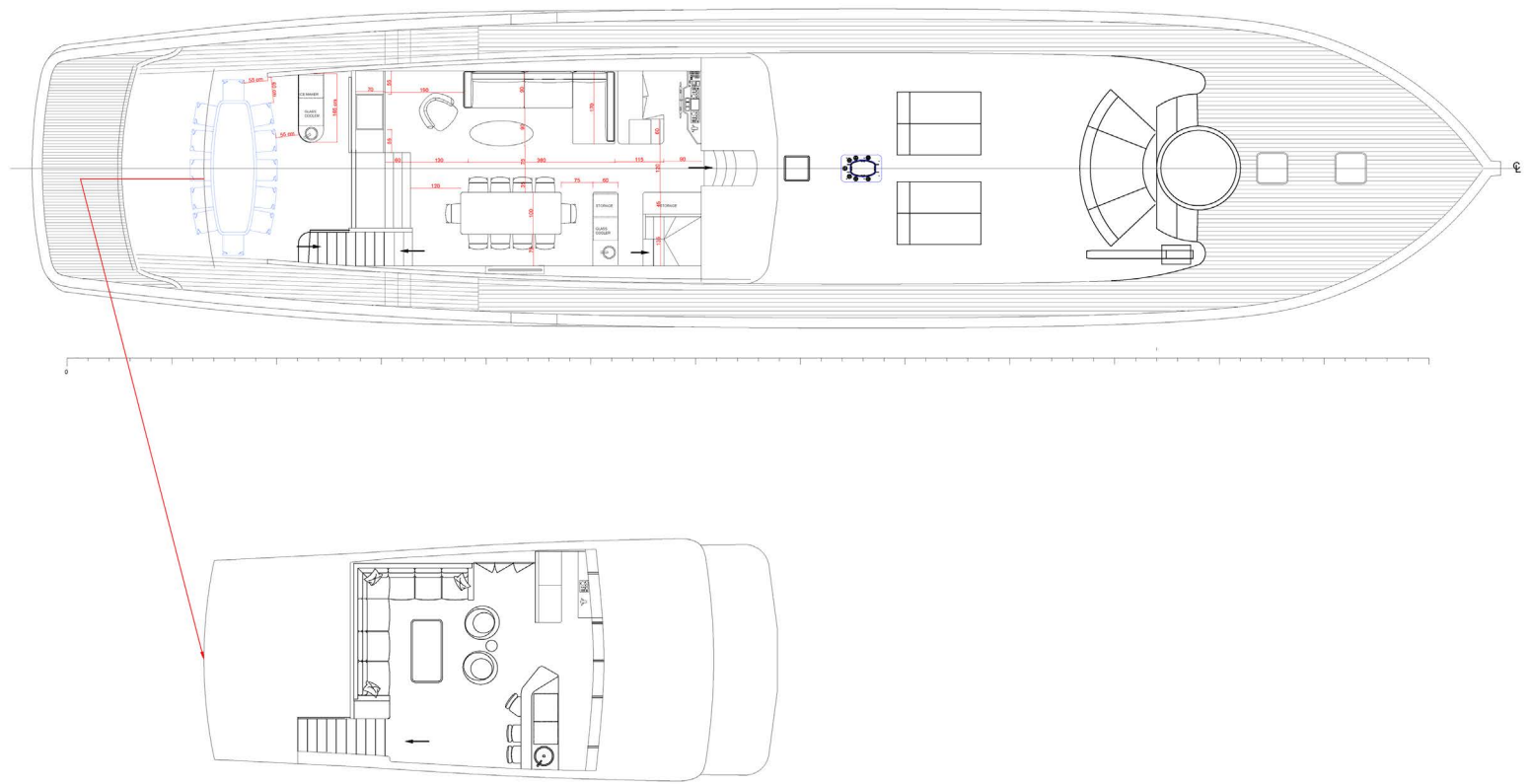
Guest Cabin



Guest Cabin



Layout



Layout

TECHNICAL SPECIFICATIONS

- LOA: 38 m
- Hull length: 35 m
- Water line length: 30 m
- Beam: 7.60 m
- Depth overall: 4.63 m
- Hull Depth: 3.4 m
- Max Draft: 3.17 m
- Displacement (full load): 195 t
- Fuel tanks capacity: 6500 l
- Fresh water tanks capacity: 3500 l
- Sewage tank capacity: 3500 l

ENGINES

2 x Cummins 610 Hp

GENERATORS

2x Onan 27 kw

ACCOMMODATIONS

- Max passengers: 10 + 6 crew
- Cabins: 5

PERFORMANCE

- Max Speed: 12 knots
- Cruising speed: 10 knots
- Economical speed: 8 knots
- Range @ 8 knots: 1000 Nautical Miles

MAIN, ELECTRICAL & HYDRAULIC SYSTEMS

- Bow Thruster
- Repeaters
- 2x Anchor windlasses
- 2x Aft mooring winches
- Water heaters
- Water maker and filters
- Air conditioning
- Fire water system
- Battery charger
- Navigation lights
- Search light

NAVIGATION & COMMUNICATION EQUIPMENT

- Radar 4kW 18''
- Multi-function display (AXIOM)
- GPS
- Chart Plotter
- Fish Finder
- Depth Sounder
- Wind speed direction indicator
- VHF
- Autopilot with p70Rs control head
- Digital Compass

EQUIPMENT

- Life raft (16 passenger capacity)
- 18 x life jackets
- 2x life rings

APPLIANCES

- 2 x Refrigerators
- Freezer
- Oven
- Microwave
- Garbage grinder
- Dishwasher
- Washing machine
- Dryer
- Wine cooler in saloon
- Ice maker (Electrolux) on Aft & Flybridge

DISCLAIMER

All speeds, measurements, capacities, consumptions, etc. may be approximate or estimated. Specifications provided for information only. Data was obtained from sources believed to be reliable and is not guaranteed by owner or brokers. Buyer assumes the responsibility to ascertain the correctness of all data contained herein and otherwise provided and must instruct his agent and surveyors to confirm all details for accuracy prior to purchase. Subject to prior sale, price and inventory change, or withdrawal from market without notice.



1 Ha'tzedef St. Herzeliya Marina, Israel 4655201 | Mobile. 972-54-7644436
Tel. 972-9-9513248 | info@aquamarina.co.il | www.aquamarina.co.il