



PRINCESS 60 2015 | € 1,090,000^{EX VAT}


AQUA MARINA
YACHTS
EST. 1995



The Yacht



The Yacht



Flybridge



Flybridge



Cockpit



Cockpit



Helm Station



Starboard & Portside



Dingy



Saloon



Saloon



Saloon



Galley



Master Cabin



Master Cabin



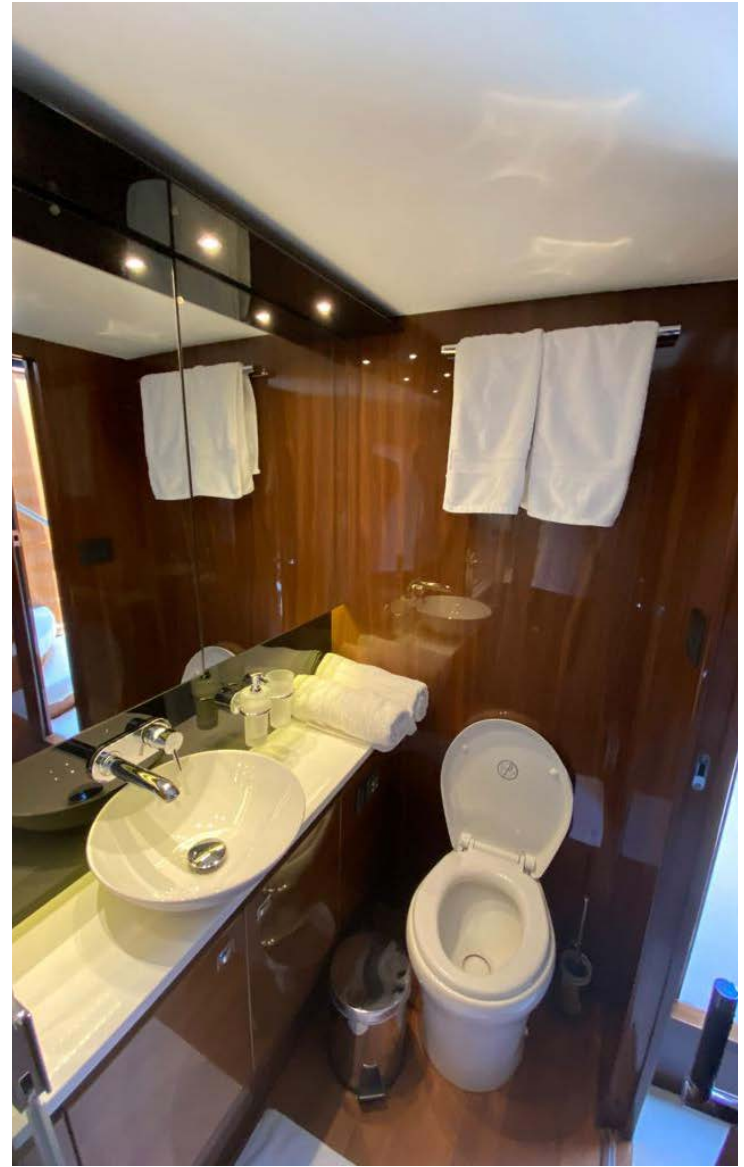
Master Cabin



VIP Cabin



Bathroom



Bathroom



Twin Cabin

LOCATION: MARMARIS, TURKEY

SPECIFICATIONS

- Length: 18.61 m
- Beam: 4.83m
- Draft: 1.27m

ENGINES

- 2 x Twin VOLVO D13-900 (2 x 900hp)
- Starboard: 1704 h
- Portside: 1705 h

Generator

- ONAN 17.5Kw – 7745 h

DECK HARDWARE

- Teak flybridge deck
- Additional 20m of 10mm anchor chain to give a total of 160 meters
- Stainless steel anchor in place of standard (30kg)

ELECTRICAL

- Continental 220v/240v ckets
- Foredeck freshwater anchor / deck wash system
- Dishwasher in galley (6 place setting)
- Refrigerator unit fitted above standard washer/dryer

AUDIO VISUAL & COMMUNICATIONS

PREMIUM AUDIO SYSTEM Incorporates:

- Deck Saloon - Harman Kardon 5.1 Blu-ray system (with Bluetooth connectivity) and KEF speakers
- Owners Stateroom - Harman Kardon 2.1 Blu-ray system (with Bluetooth connectivity) and KEF speakers
- Flybridge al linked to the saloon audio system
- Waterproof cockpit speakers with local control (linked to flybridge system)

NAVIGATION

- Raymarine e125 multifunction 12.1" brilliant color multifunction display at upper helm
- European version plotter charts
- Raymarine AIS Class B transponder interfaced with chart plotter & with 8ft (2.4m) aerial International VHF N.E.C.

AIRCONDITIONING

Airconditioning/heating reverse cycle (74,000 BTU) suitable for temperatures to 40°C (tropical) With controls in all cabins and outlets in all areas (including bathrooms)

HEATING / DEMIST

Windscreen demist system using warm air heater powered from calorifier

MOSQUITO SCREENS

Mosquito screens for portlights

HOLDING TANK / TOILETS

- Vacuum Toilets (with holding tank)
- overboard discharge and reserve manual overboard discharge arrangements.

EXTERIOR UPHOLSTERY / CANVAS / COVERS

- Cockpit & flybridge upholstery including helm seats - Movida Metallic contrasting stitching & self colored piping
- Color : MET BEIGE Contrast MET BEIGE
- Bimini Top - Dark Blue Sunbrella canvas
- Additional charge for Bimini top to have LED overhead lighting
- Additional charge for Bimini top to be electro-hydraulically powered
- All exterior covers to be in canvas/acrylic material in place of standard – BLUE
- Supply zipped pockets for cockpit cover (F365)

EXTRAS

- Seakeeper NG9 Gyro - 4568 h
- Hydraulic gangway
- Safety Equipment
- Water maker Idromar 2523 h
- Stern docking winches
- Under water lights
- Williams get tender 325 - 179 h
- Foredeck sunbed cushion cover
- Wind display
- Camera in engine room
- Inverter
- Replace the chain to 10" 80m
- AIS system
- Separated Washer drier in crew area
- Cockpit mesh shade
- 108L freezer
- Wine fridge 46 bottle
- Glomex 3G Wi-Fi router system
- Safe in master cabin
- Dingi – Gala 650-

DISCLAIMER

All speeds, measurements, capacities, consumptions, etc. may be approximate or estimated. Specifications provided for information only. Data was obtained from sources believed to be reliable and is not guaranteed by owner or brokers. Buyer assumes the responsibility to ascertain the correctness of all data contained herein and otherwise provided and must instruct his agent and surveyors to confirm all details for accuracy prior to purchase. Subject to prior sale, price and inventory change, or withdrawal from market without notice.



1 Ha'tzedef St. Herzeliya Marina, Israel 4655201 | Tel. 972-9-9513248
Fax. 972-9-9513247 | info@aquamarina.co.il | www.aquamarina.co.il