

NOAM

LUXURY M/Y



AQUA MARINA
YACHTS
EST. 1995

NOAM. LUXURIOUS M/Y

2000 / 2021

This vessel is a perfect example of modern building techniques with classic motor yacht design. Noam is a luxurious 28-meter yacht seaworthy that offers comfort.

She was built in the year 2000 by one of the world's leading experts in this field at Choe Lee shipyard.

The Interior design was made by the current owner, who was inspired by Roberto Cavalli's textiles and used materials for a modern, unique style and design.

She went under extensive refits during the years 2020-2021.

Now the vessel has new generators, and many up-to-date electronics, navigational, and entertainment systems.

The wide and open flybridge is highlighted by timeless fiberglass hardware and featured a jacuzzi.

The main saloon is airconditioned and offers an elegant seating area.

This yacht offers 4 luxurious guest cabins featured with double beds, air-conditioning, 65 inches televisions, and a personal safe.

Fully equipped professional galley, two cabins, and 5 berths for the crew members.

Noam accommodates up to 8 guests and 5-6 crewmembers on board.

This stunning 28-meter motor yacht is truly one-of-a-kind and gives an exciting opportunity to acquire a luxurious experience.



EXTERIOR



EXTERIOR



EXTERIOR



EXTERIOR



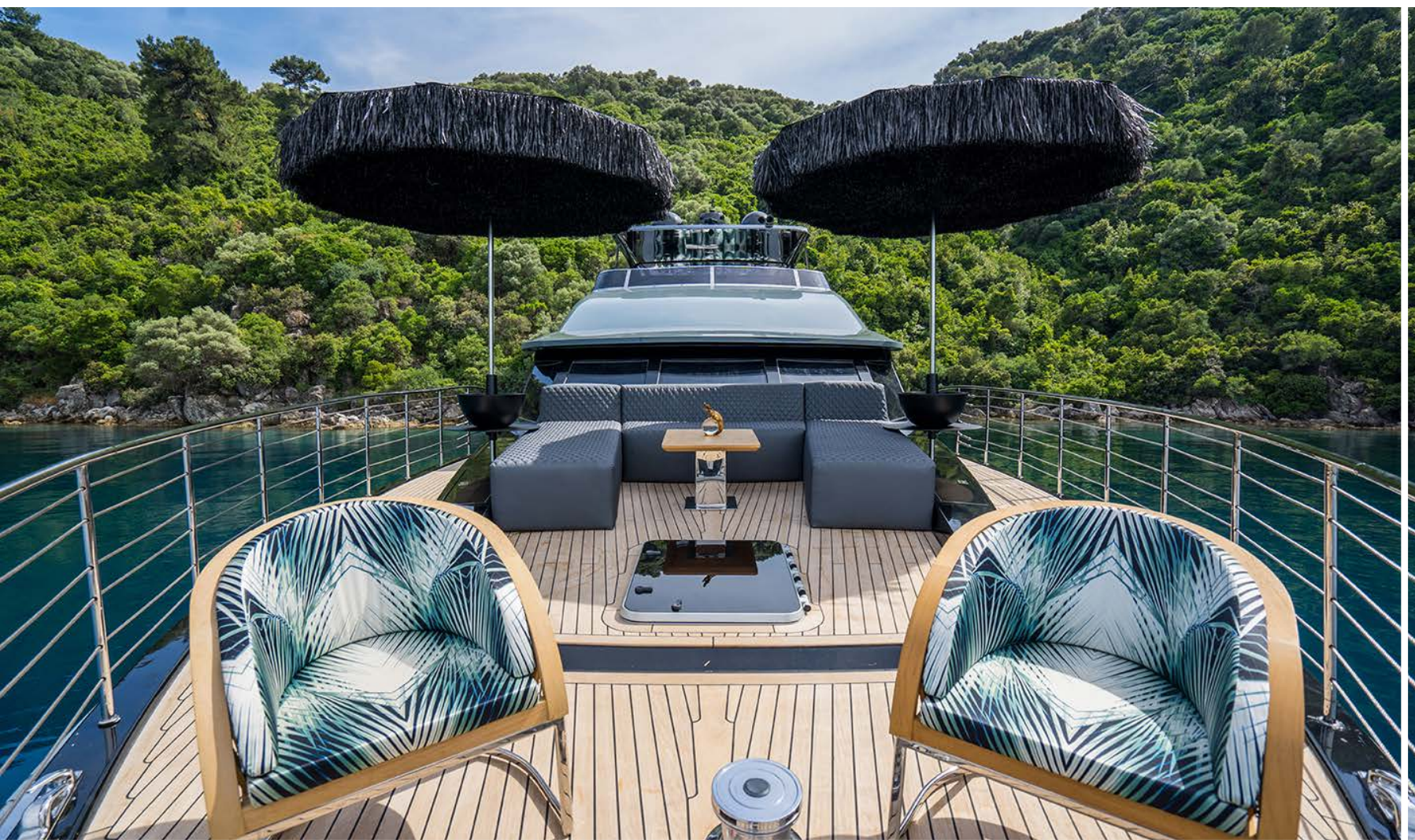
EXTERIOR



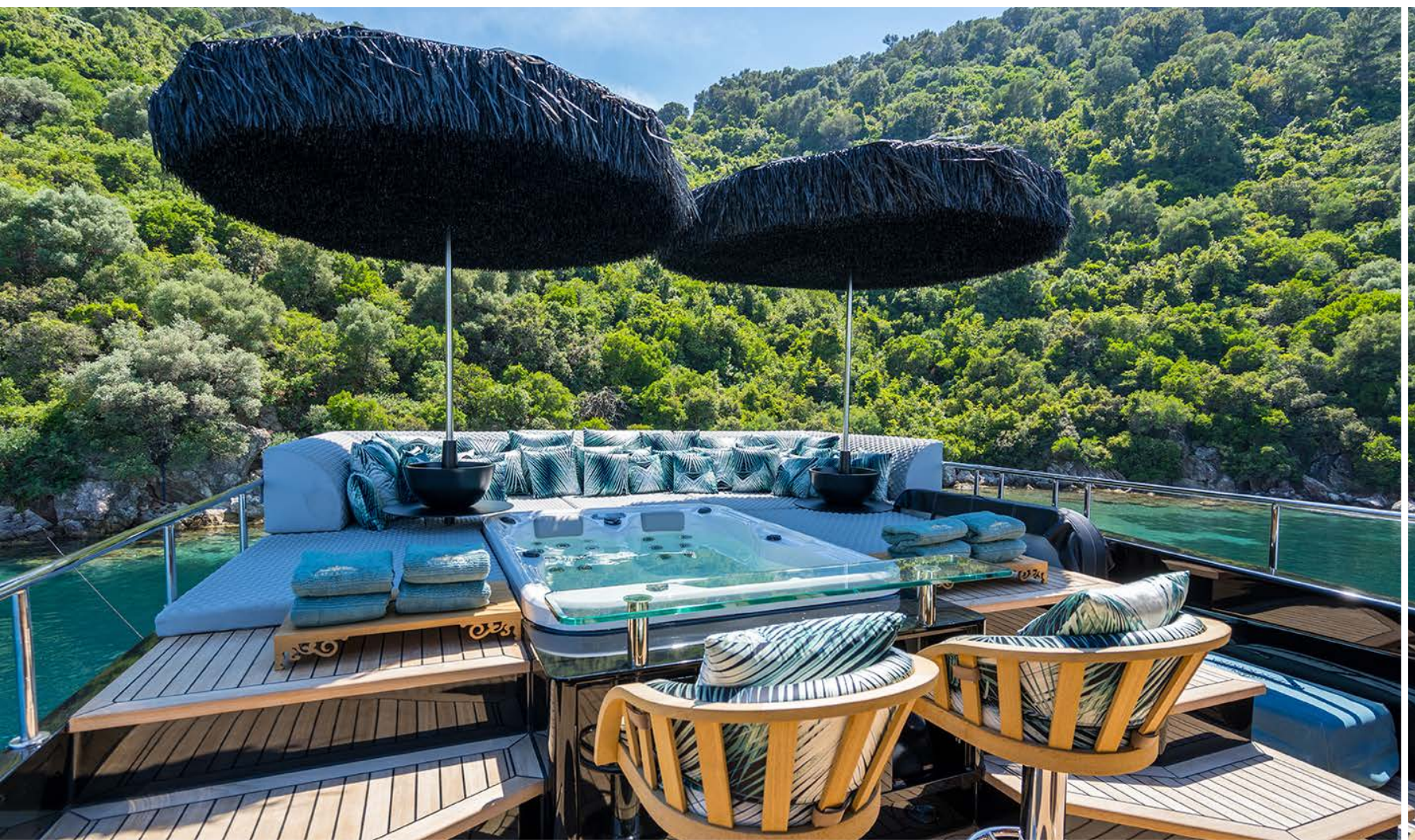
EXTERIOR



EXTERIOR



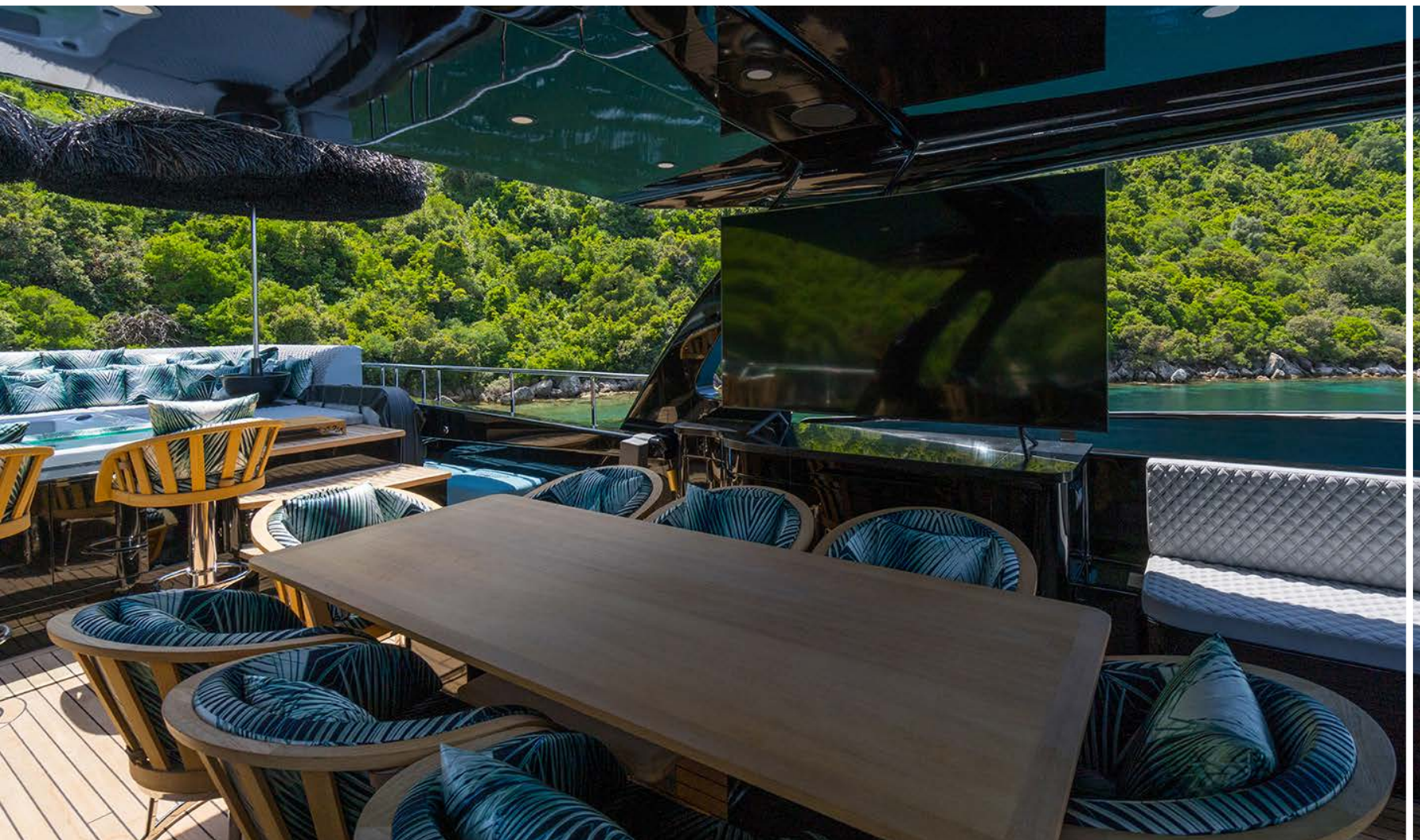
EXTERIOR



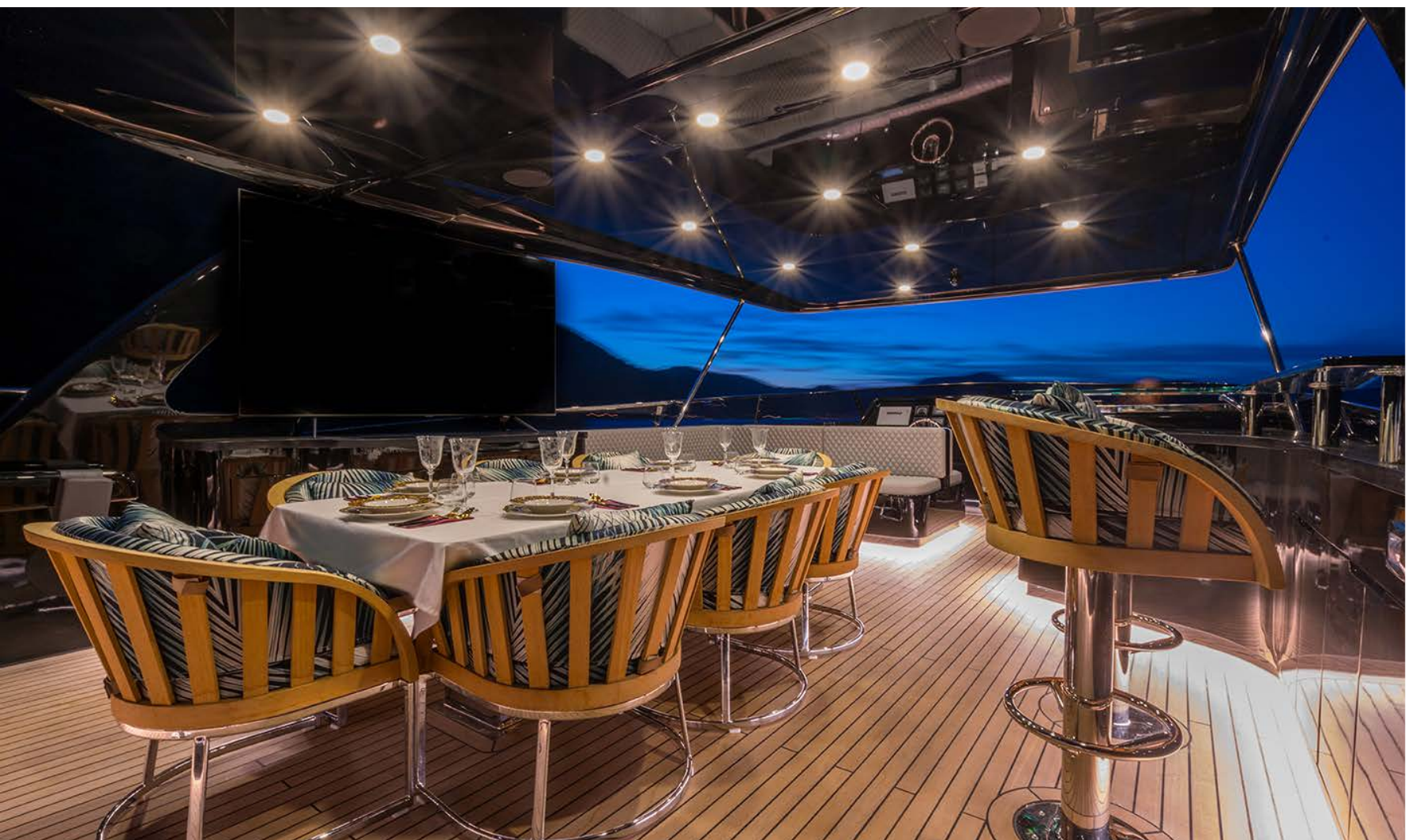
EXTERIOR



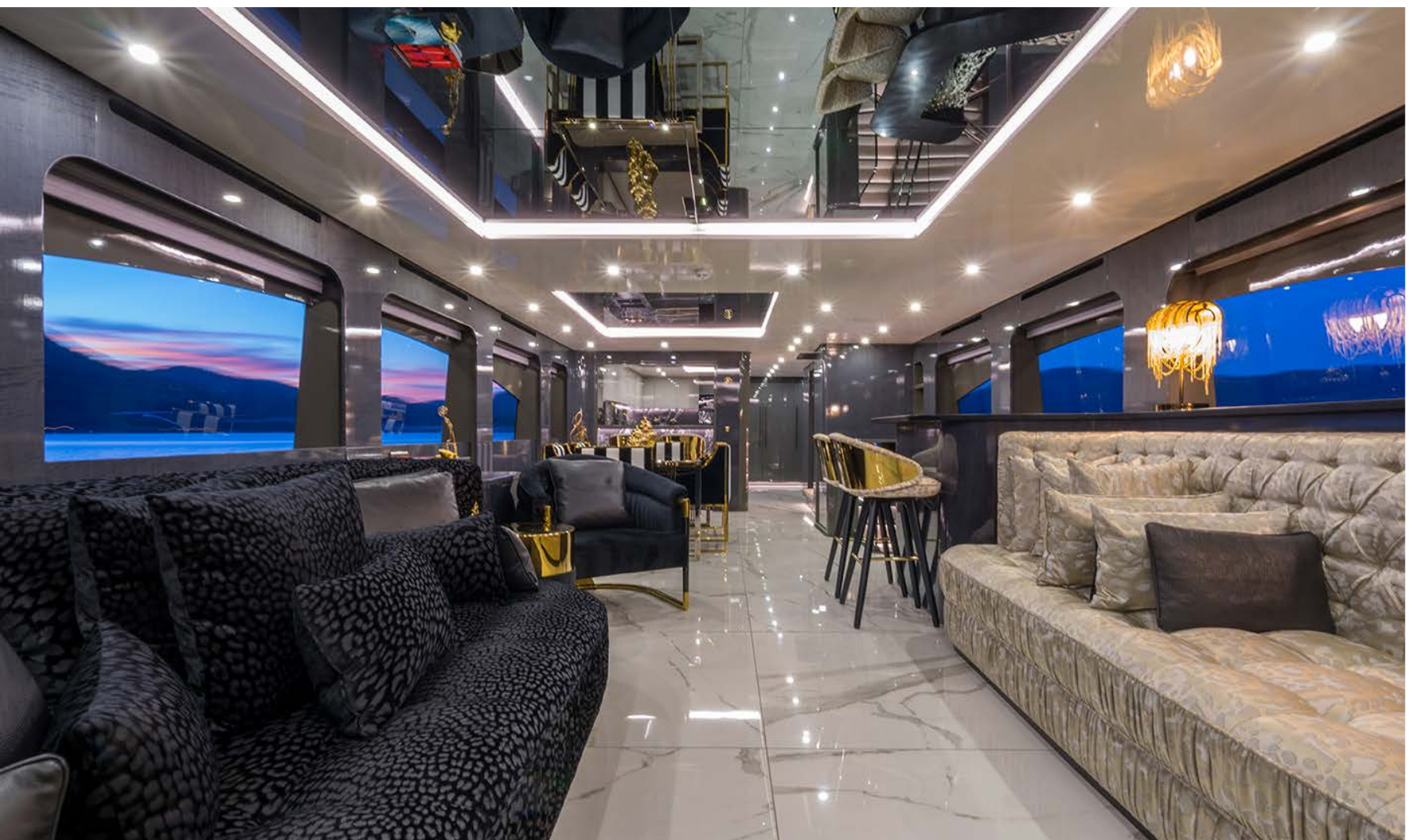
EXTERIOR



EXTERIOR



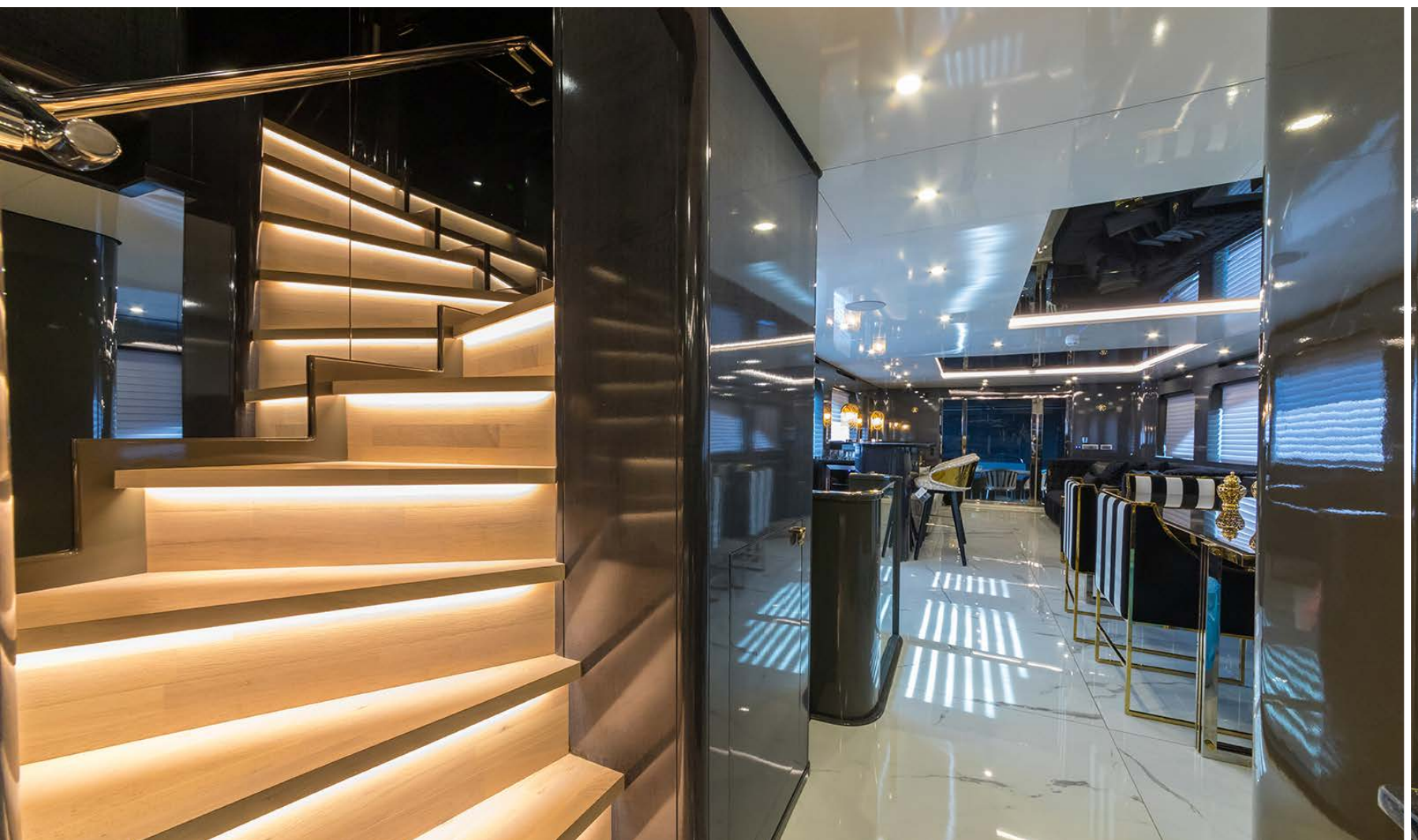
EXTERIOR



SALOON



GALLEY

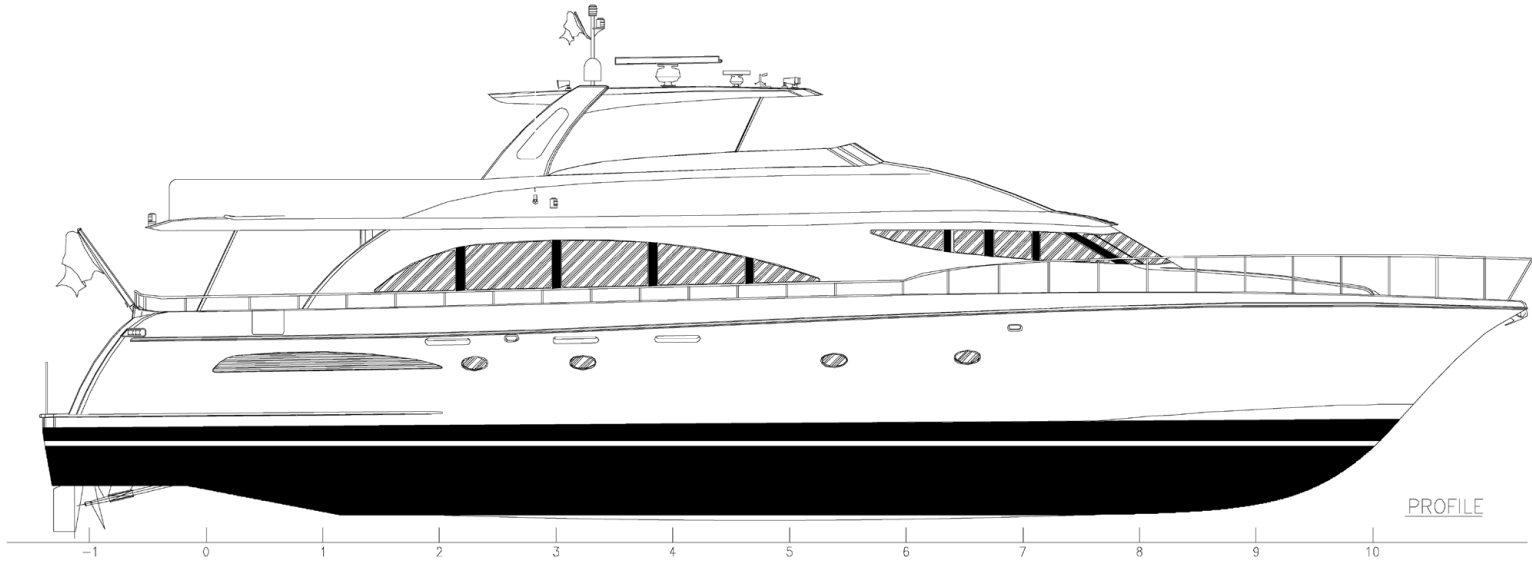


SALON

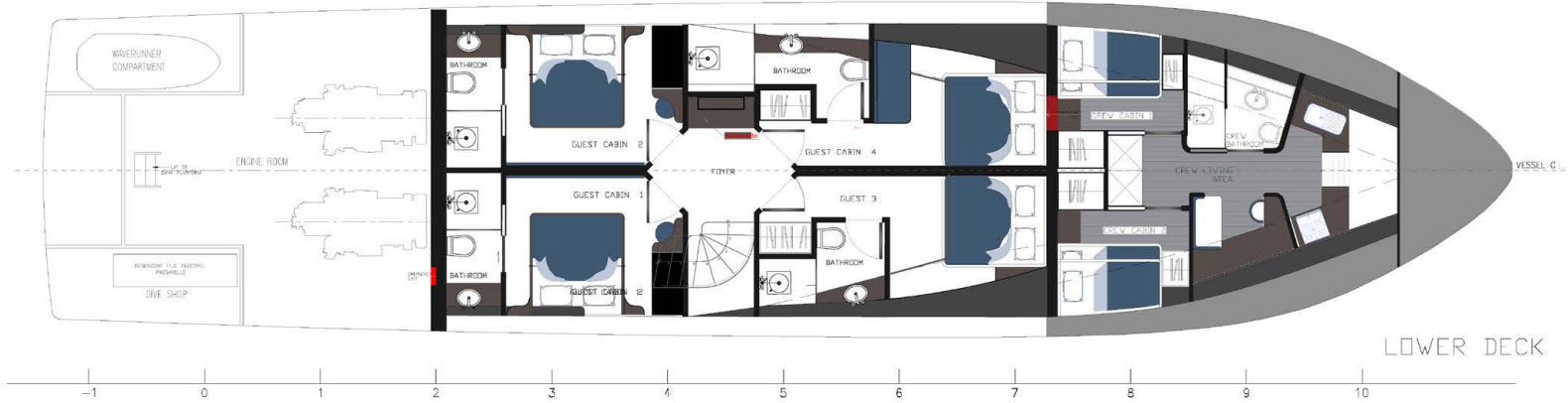


**MASTER
CABIN**

PROFILE

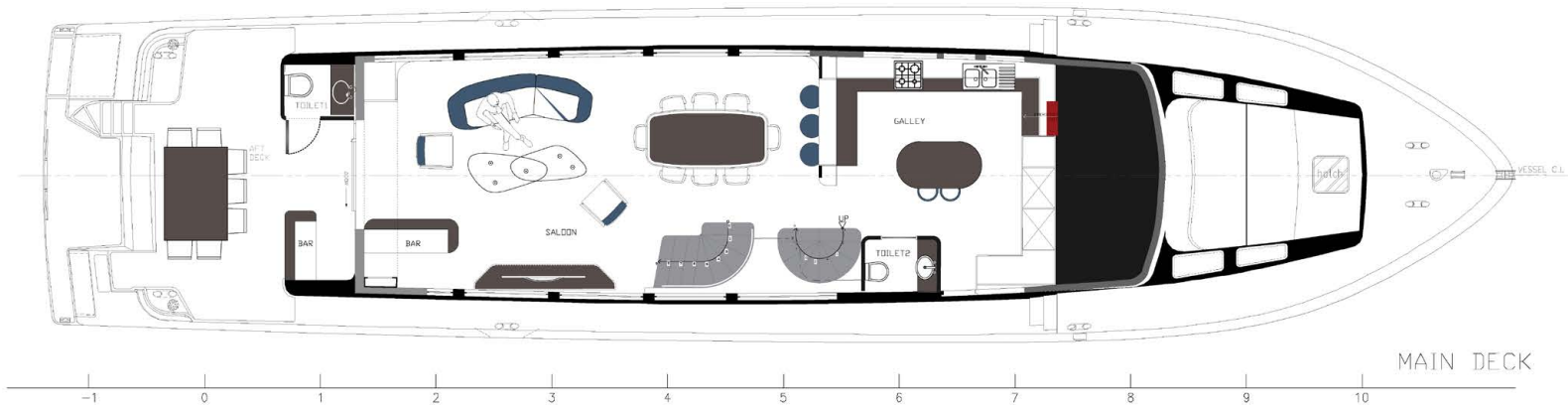


LOWER DECK

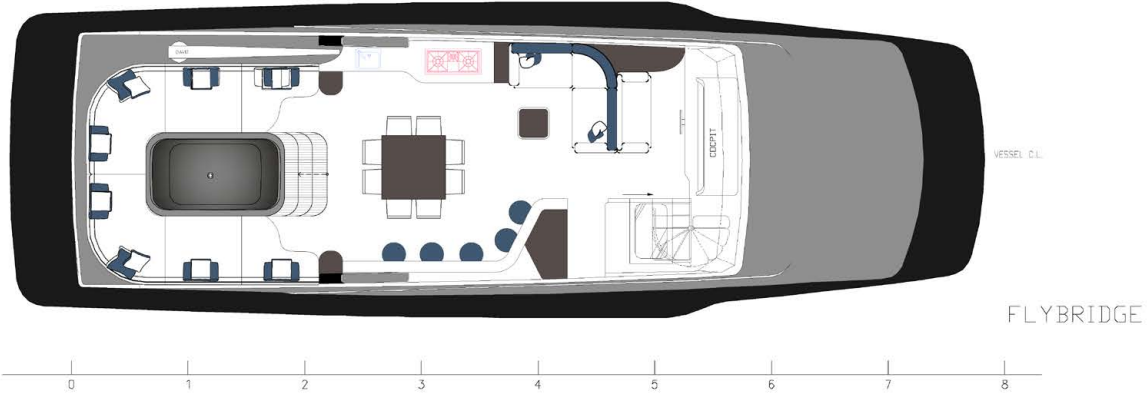


LAYOUT

MAIN DECK



FLYBRIDGE



Modern technology meets classic design
Top quality materials in traditional interior design
Major refit works between 2020-2021

HULL & DIMENSIONS

- Type: Motor Yacht
- Hull: Fiberglass
- Builder: Choe Lee Taiwan
- Model Year: 2000
- Last Ref it: 2020
- L.O. A: 28 m / 91.8 ft
- Beam: 6.5 m / 21.5 ft
- Draft: 2.5 m / 8.5 ft
- Displacement: 100 Tons
- Cruising Speed: 10 Knots
- Max speed: 20 Knots
- Flag: Delaware

ENGINE ROOM

- 2 x caterpillar 143-3522 Engine - Hours
- Port 1266
- STB 1263
- 1 x cummins onan -50K W 220v Generators
- 3284 hours
- 1 x cummins onan 27K W 220v Generator
- Hours - 2585
- Aqua Whisper Water Maker
- 1454.7 hours
- Clima Air-condition Unit 150.000BTU
- Miele Washing Machine and Miele Tumble Dryer
- 2 fresh water pumps
- Engine black water jet vacuum WC system
- Air compressor
- 1 hot water boiler 300lts
- 1 Crew cabin hot water boiler



DECK

- 1 x Fire Hose Points
- 1 X Anchor Hydraulic Windless with 180mt chain and 250kg anchor
- Stainless steel and Teak swimming Platform/Ladder aft side - 1 x Aft deck table for 6 -8 pax
- 2 x Harken Deck Winches
- Various fenders and Covers
- 5 x Sun Umbrella
- Hot and cold-water Jacuzzi on flybridge

GALLEY

- 1 x Frankie Microwave
- 2 x Frankie Convection /Fan Ovens
- 1 x Bosch dishwasher
- 1 x Frankie 2 door Fridge /Freezer
- 4 x silver line Mini fridge at the bar/saloon
- Blender
- Coffee Maker
- Various normal kitchen appliances such as blender

NAVIGATION

- 1 x SIMRAD 18 inch with Radar & chart plotter. - 2020
- Autohelm Series Wind Indicator, speed, Depth and Auto Pilot. -2020
- VHF DSC 6222 -2020
- Furuno BNWAS BR 510 - 2019
- Side Power Hydraulic Bow thruster
- 2 x IT T Jabsco Searchlight Controls
- 2 x caterpillar Engine alarm control panel
- Gen's indicators & remote control

TENDER

- Tender: Monterey 8.2 LT mag 430 hp

CABINS

- 4 x Master Cabin with Shower and WC
- Access to crew quarters can be from the Bow of the Yacht for owners Privacy

SAFETY

- Full Fire Extinguisher Safety Certificate
- 12 Fire extinguishers
- Protec Fire Alarm Control Panel Covering Whole Yacht
- Full Complement of Flares as per SOL AS
- 2 x 8 men Life Rafts
- Life Jackets and Safety Harnesses
- EPIRBs: Kannad 406 MHz EPIRB

TANKAGE

- Total Capacity Fresh Water 5000 liters
- Total Capacity Fuel 11,500 liters
- Grey and Black Total Capacity 5000 liters -Water Maker 1: Sea Recovery 500 LPH

ENTERTAINMENT SYSTEMS

- Master Cabins: Sonos air play sound system
- Main Salon: Sonos air play sound system
- Main deck: Sonos air play sound systems
- Guest cabin Sonos air play sound system

DECK TOYS

- 2 x 1 Man Kayaks
- 1 x Sea Bike
- 1 x Diving Equipment
- 1 x JET-SKI



CRUISING AREA: Athens, Greece

MAY / JUNE / SEPTEMBER / OCTOBER

€ 49,000

+ APA + Greek VAT

JULY / AUGUST

€ 52,500

+ APA + Greek VAT

W
O
A
M

DISCLAIMER

All speeds, measurements, capacities, consumptions, etc. may be approximate or estimated. Specifications provided for information only. Data was obtained from sources believed to be reliable and is not guaranteed by owner or brokers. Buyer assumes the responsibility to ascertain the correctness of all data contained herein and otherwise provided and must instruct his agent and surveyors to confirm all details for accuracy prior to purchase. Subject to prior sale, price and inventory change, or withdrawal from market without notice.



1 Ha'tzedef st. Marina Herzliya, 46764 | Tel. 972-9-9513248
Fax. 972-9-9513247 | info@aquamarina.co.il | www.aquamarina.co.il



AQUA MARINA
YACHTS
EST. 1995