



Custom Line Navetta 33 | 2022 | € 12,850,000 EX VAT







---

The Yacht

---





---

The Yacht

---



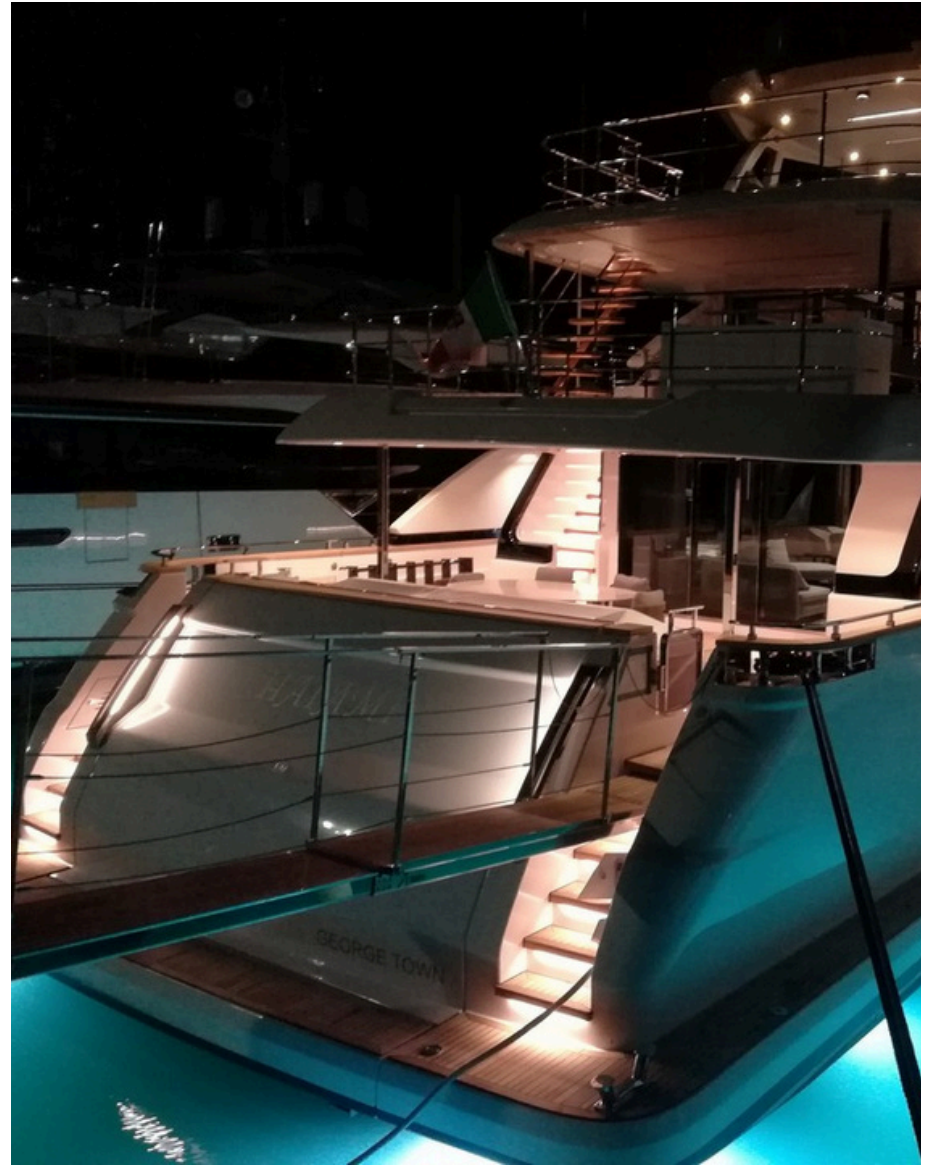


---

The Yacht

---





---

Stern

---





---

Garage

---





---

Bow

---





---

Sundeck

---





---

Sundeck

---



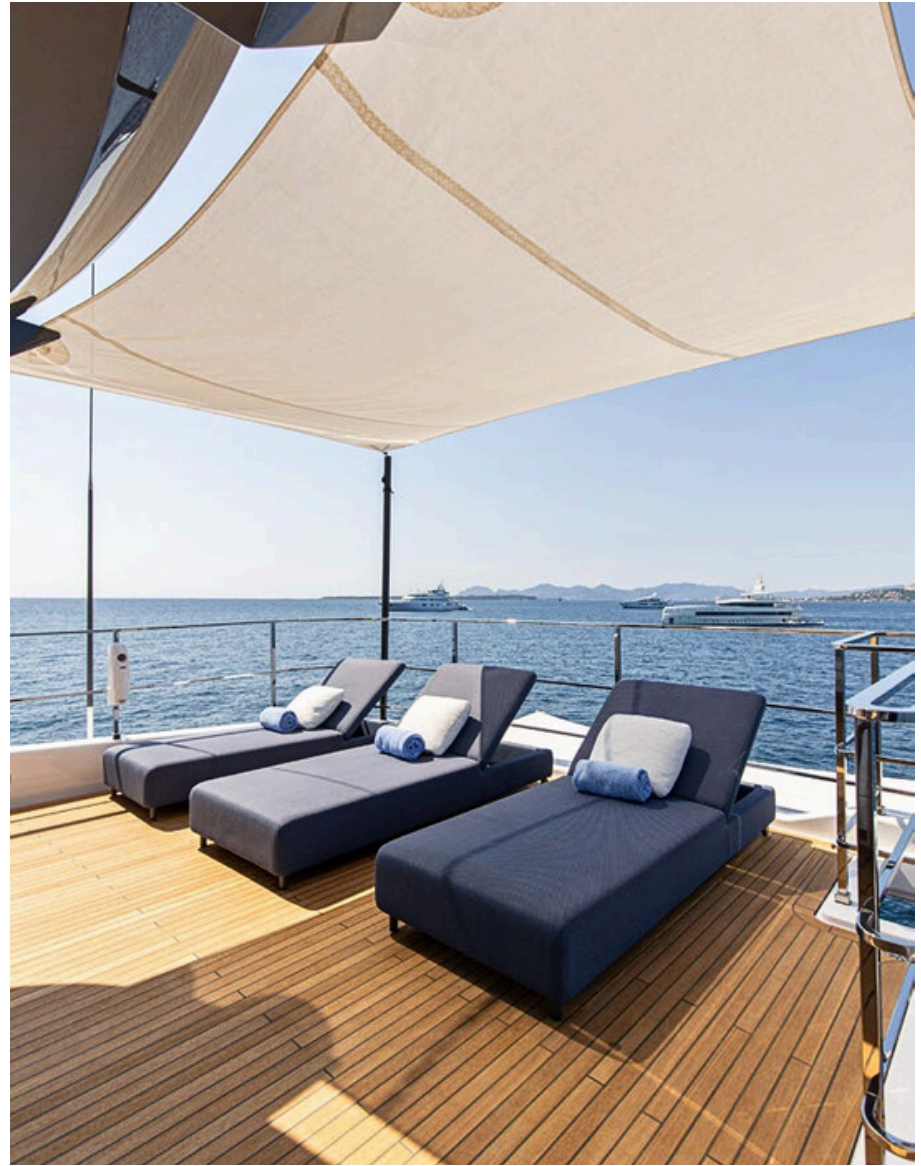


---

Sundeck

---





---

Sundeck

---





---

Sundeck

---





---

Upper deck

---





Upper deck





---

Upper deck  
Skylounge

---





---

Upper deck  
Skylounge

---





---

Helm Station

---





---

Main deck

---



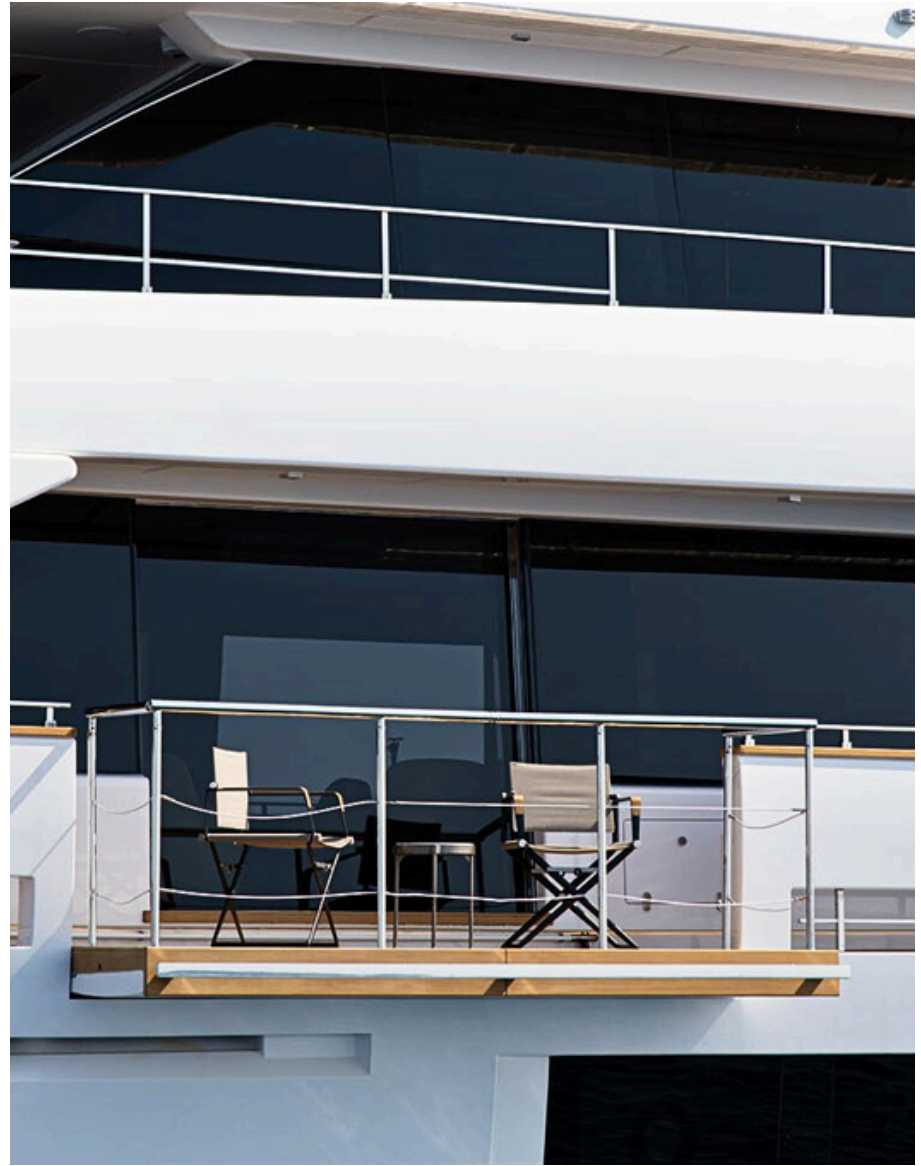


---

Main deck

---





---

Balcony

---





---

Main Saloon

---





---

Main Saloon

---





---

Dining Area

---





---

Stairs

---





---

Master cabin

---



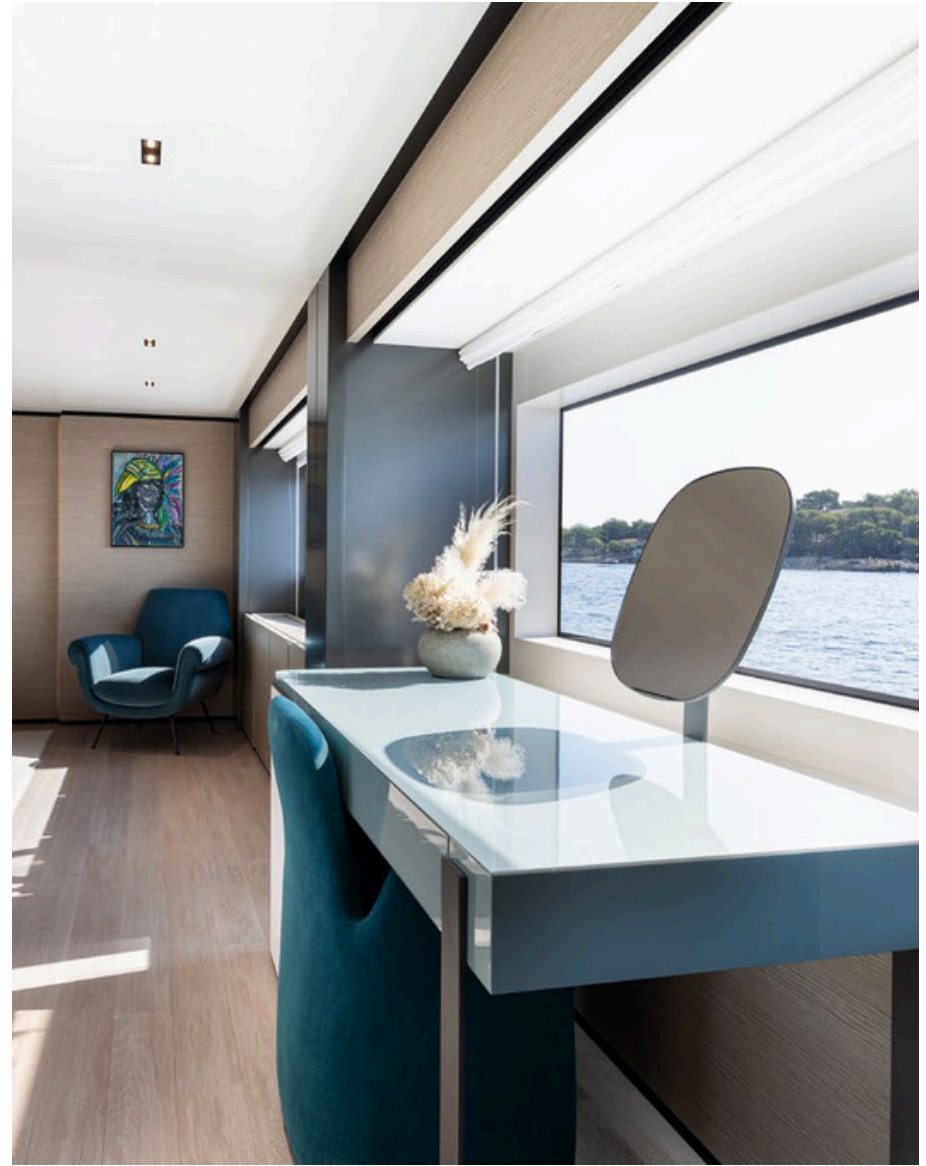


---

Master cabin

---





---

Master cabin

---





---

Master bathroom

---





---

Double Cabin

---





---

Double Cabin

---



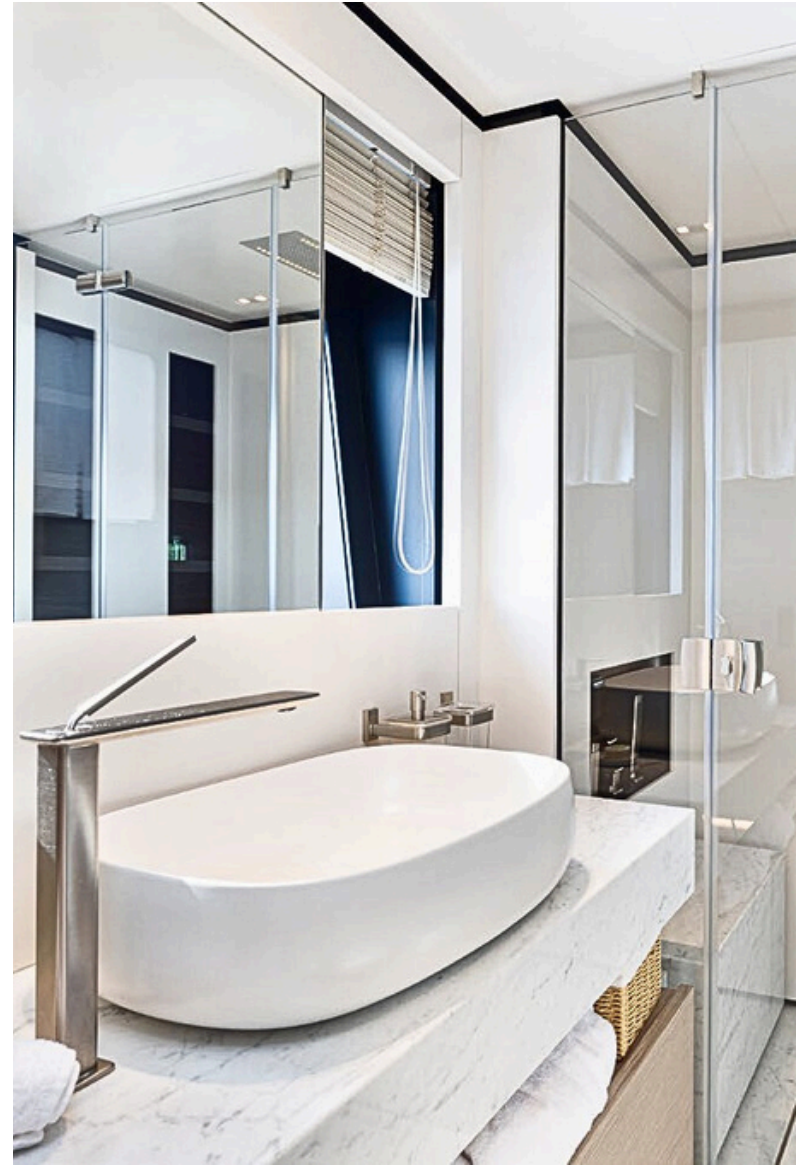


---

Twin Cabin

---



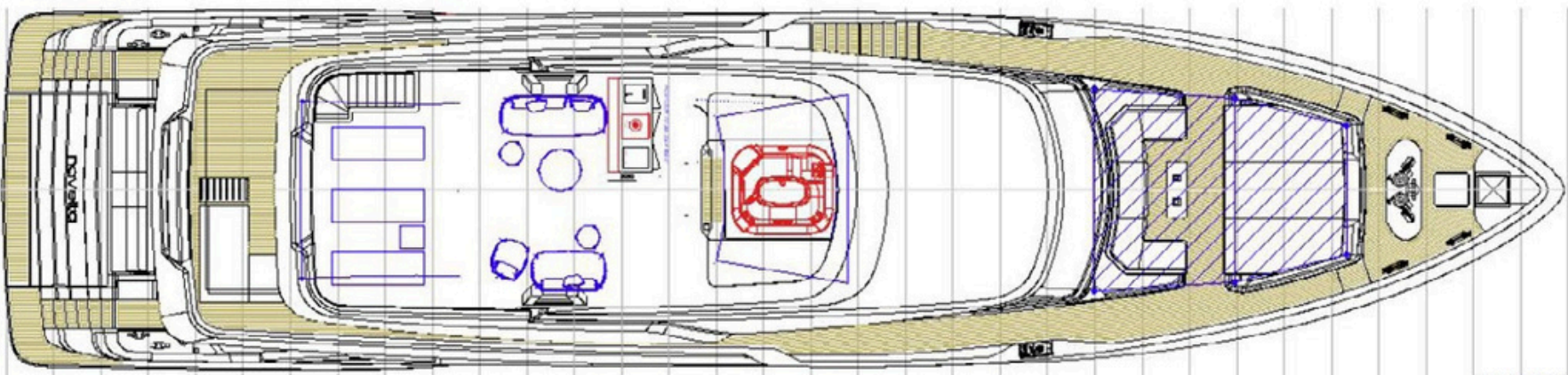


---

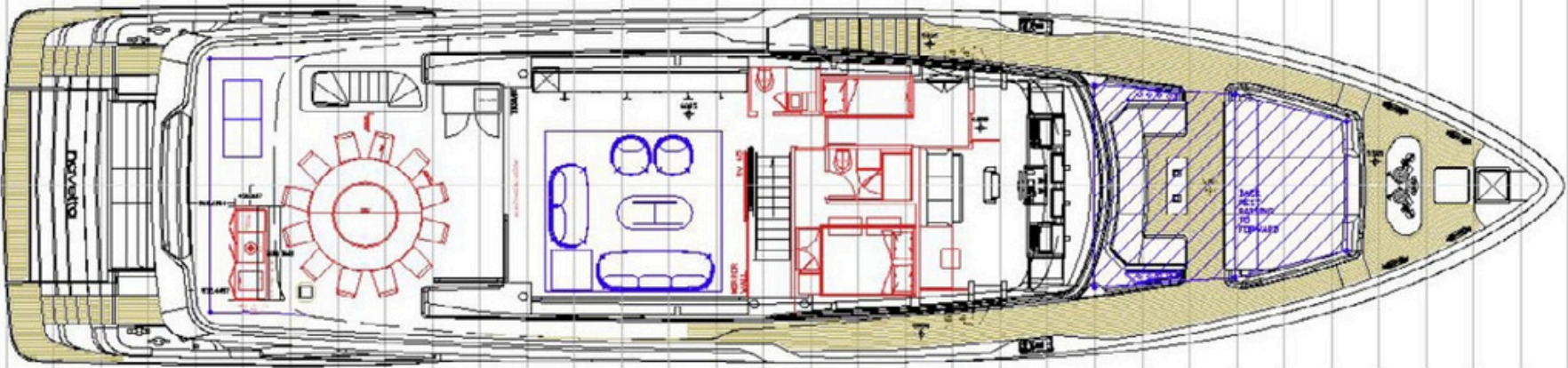
Guest  
Bathroom

---





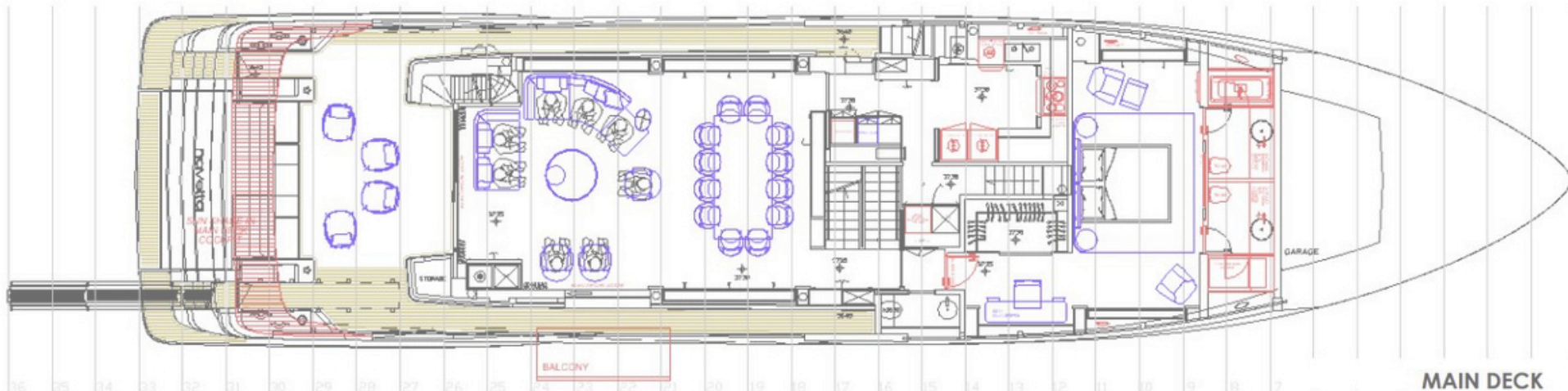
SUN DECK



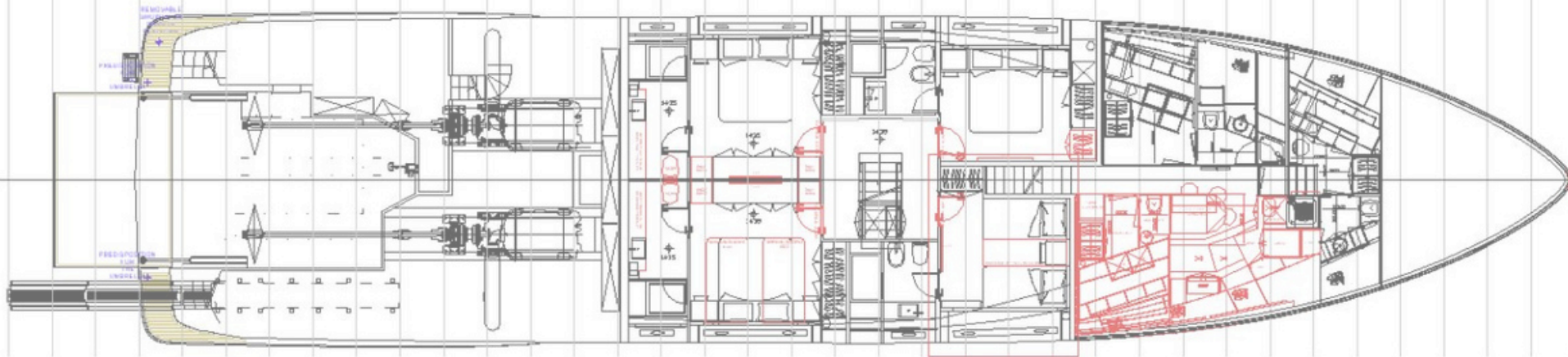
UPPER DECK

33 32 31 30 29 28 27 26 25 24 23 22 21 20 19 18 17 16 15 14 13 12 11 10 9 8 7 6 5 4 3 2 1





MAIN DECK



LOWER DECK



**SPECIFICATIONS:**

LOA: 33 m

Waterline Length: 28 m

Beam max.: 7.5 m

Displacement (LightShip): 160 t

Displacement (full load): 182 t

Gross tonnage: 262 GT

Fuel tank capacity: 18,700 l

Fresh water capacity: 3,100 l

Grey water capacity: 700 l

Black water capacity: 700 l

Hull material: Fiberglass/GRP

Exterior Design: Zuccon International Projects

Interior Design: Feretti Group

**ACCOMMODATIONS:**

Cabins: 6 + 4 crew

Heads: 9 + 3 crew

**PERFORMANCE:**

Engines: 2 x MAN – V12 LE446 1400 Mhp

Generators: 2 x Caterpillar (55 kW)

Max. speed: 15 kn

Cruising speed: 12 kn

Range at cruising speed: 1200 nm

**NAVIGATION:**

-Dashboard with navigation and automation system

-Bow thruster control lever

-Main engine throttles

-Autopilot

-2 x VHF

-Radar

-Magnetic Compass

-3 x GPS



## **ELECTRICAL & MAIN SYSTEMS:**

- Bow thruster
- Stern thruster (hydraulic)
- Water maker 500 l/h (IDROMAR)
- Treatment system for black water (HAMANN)
- AIS (FURUNO)
- 2 x Seakeepers Gyro stabilizers
- Trac stabilizers fins
- Internet connection ( 5G modern HD4 with 4 sim card) 21 access points
- Fresh water – UV water sterilizer, softener and active carbon filter
- CCTV System
- Generators anti vibration system
- Chart Plotter system
- Boiler for hot water – 600 Liters
- Dimmer lights – lower deck
- Dimmer lights – main deck
- Dimmer lights – upper deck
- Flir - Mast camera with night vision
- Airconditioning system
- Sound system

**INTERIOR:**

- Automatic door in main saloon and upper saloon
- Lightning strip beneath the beds in master and lower deck cabin
- LG TV in each cabin and saloon (43'' / 55'' / 65'')
- Sliding beds in Starboard VIP cabin
- Vanity chair in Master cabin
- Phone in mater bathroom
- Rain shower in master bathroom
- Dining table and 12 x dining chairs in main saloon
- Rounded dining table in Upper Aft deck (for 12 people)
- Openable portholes
- Glass aft door noise insulation
- Chain counters
- Wooden floor on main deck
- Dark grey vinyl floor in galley
- Silence project – insulation project



**EXTERIOR:**

- Bar in Upper Aft deck (including fridge, glasses, dishwasher, cocktail equipment & sink)
- Bimini Top – SD aft cockpit & SD above the jacuzzi
- Hinges on all external furniture
- Additional control station on aft port side
- Fin stabilizers
- Side Balcony on MD starboard side
- External plugs
- Deck wash outlets—at bow, in the aft garage, in upper deck, 1 on each sidewalk in main deck
- Swimming ladder
- Mosquito nets
- Underwater lights
- Removable shower on garage platform
- Mooring whips
- 2 x retractable cleat on swimming platform
- Forward triangle area with teak floor
- Teak on Sundeck
- Hydromassage Jacuzzi on Sundeck with temperature control and teak cover

**APPLIANCES:**

- 2 x Dryer (MIELE) industrial
- 2 x Washing machine (MIELE) industrial
- Ice maker on SD
- Wine cooler in pantry main deck
- Ironing board in crew area
- Microwave in galley
- Dishwasher in galley (MIELE)
- Fridge in lobby
- Oven
- Fridge – freezer
- Trash compactor
- Grill

**SAFETY:**

- 2 x housed life rings
- 2 x life rafts for 10 people each
- 20 x life jackets
- 2 x child life jackets



**DISCLAIMER** All speeds, measurements, capacities, consumptions, etc. may be approximate or estimated. Specifications provided for information only. Data was obtained from sources believed to be reliable and is not guaranteed by owner or brokers. Buyer assumes the responsibility to ascertain the correctness of all data contained herein and otherwise provided and must instruct his agent and surveyors to confirm all details for accuracy prior to purchase. Subject to prior sale, price and inventory change, or withdrawal from market without notice.



1 Ha'tzedef St. Herzeliya Marina, Israel 4655201 | WhatsApp. 972-50-8586580  
Tel. 972-9-9513248 | info@aquamarina.co.il | [www.aquamarina.co.il](http://www.aquamarina.co.il)