

PRINCESS V50
PRODUCT PLATFORM DOCUMENT





/

CONTENTS

/

PRINCESS V50

The Class	3
Highlights	4
Profiles	5
Layouts	8
Exterior	12
Interior	16
Principal Dimensions	20
Detailed Specifications	21
Detailed Specifications V50 Open	24

THE CLASS

Take the helm and the variable geometry of the deep-V hull assuredly translates any surge of power into taut handling. Enjoy a spirited dash across the ocean in a Princess V Class, a paradox of responsive power and exclusive luxury.



HIGHLIGHTS

- New up to date window lines and air intake covers
- Standard engines are Twin Volvo IPS600, 2 x 440mhp compared to previous 435mhp
- Increase in fuel capacity of 225L from previous model
- Increase in water capacity from previous model
- 4kW generator as standard over old gas system
- Volvo-Garmin navigation system (previously Raymarine)
- New styling to lower dinette with new U-shaped seating replacing old L-shape
- New style hot and cold transom shower
- New separate U-shaped and L-shaped seating to aft with optional seat infill, this allows access to cockpit from port side transom steps
- Solid surface sink over previous stainless-steel
- Optional new synthetic teak
- Optional Garmin On-Deck smart boat
- Optional Premium audio system upgrade featuring Naim audio
- Optional sideboard in lieu of starboard sofa in Master Stateroom



PROFILES



PRINCESS V50 - STANDARD SPEC

OPTIONAL PROFILES



PRINCESS V50 - ALLURE SPEC WITH WHITE HULL



PRINCESS V50 - ALLURE SPEC WITH BLUE HULL

OPTIONAL PROFILES - V50 OPEN



PRINCESS V50 OPEN - ALLURE SPEC WITH WHITE HULL

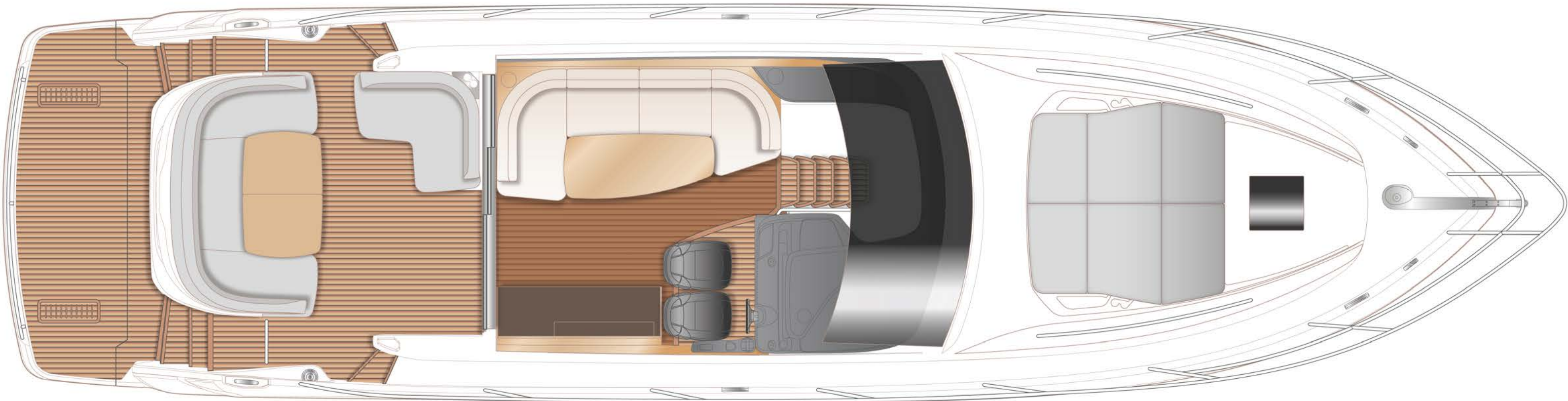


PRINCESS V50 OPEN - ALLURE SPEC WITH BLUE HULL

STANDARD LAYOUT

MAIN DECK

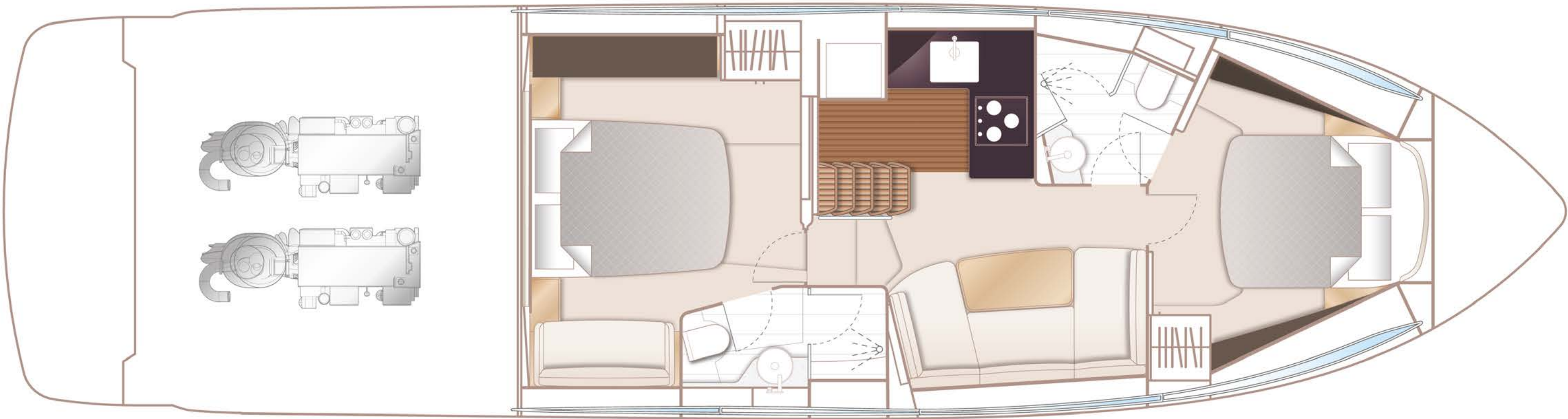
- Transom platform with integrated swim ladder
- New U-shaped and L-shaped seating to cockpit
- Triple framed sliding door to cockpit from saloon
- Opening electric sliding roof
- Teak deck material to transom platform, cockpit and steps to side deck
- Twin adjustable helm seats



LOWER DECK

- Galley with ceramic 2 burner hob, sink, microwave, full height fridge freezer and waste bin
- New styling u-shaped seating to lower dinette
- Twin volvo ip600-440 engines

MAIN DECK WITH OPTIONAL TV AND FOREDECK SUNBED CUSHIONS



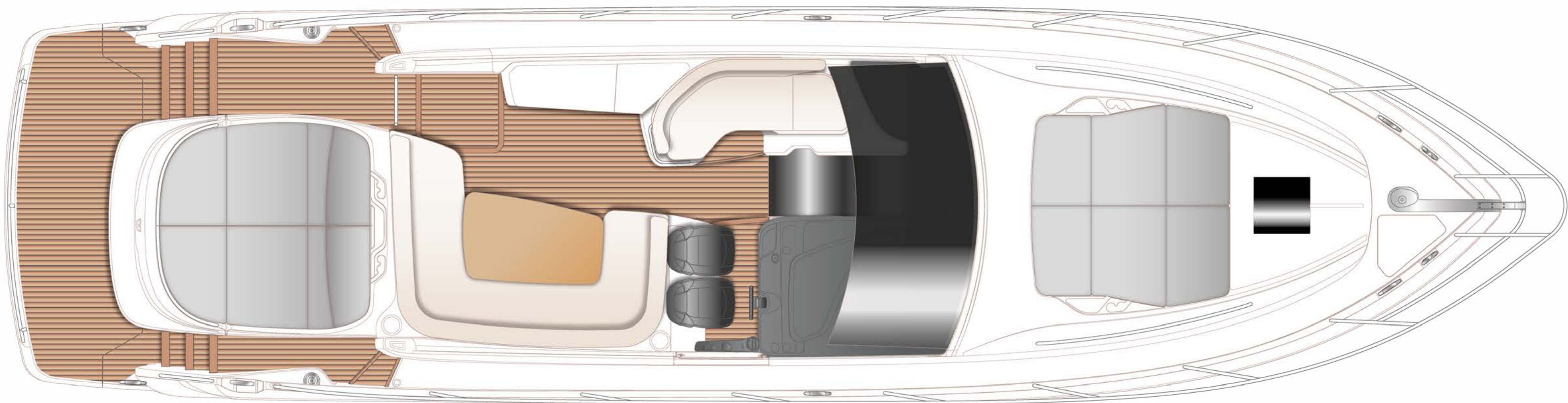
LOWER DECK WITH OPTIONAL TV IN CABINS

*1X closed 1300 issue F

STANDARD LAYOUT - V50 OPEN

MAIN DECK

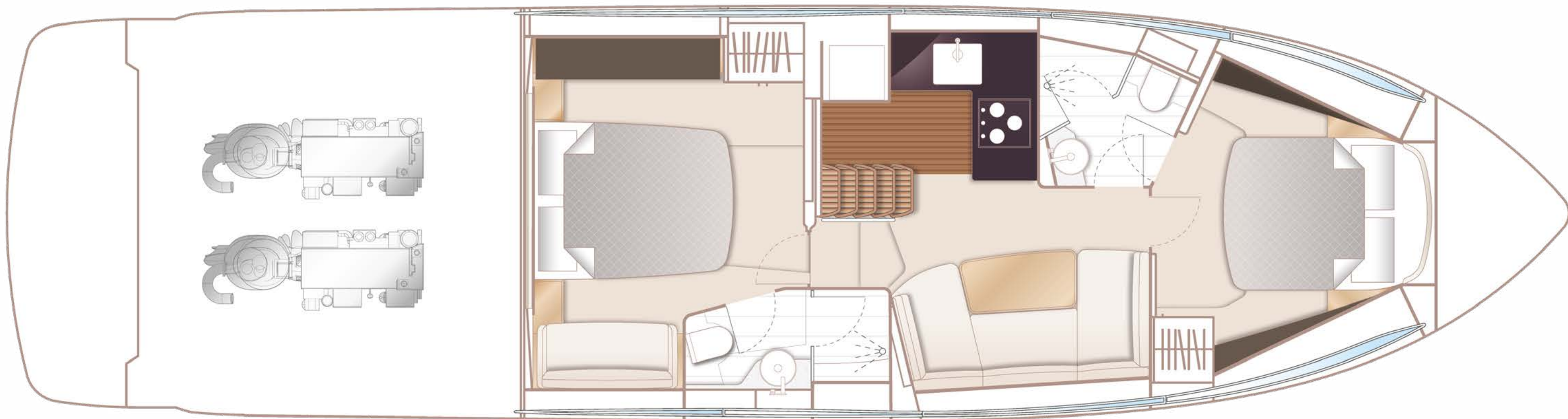
- Large aft sunpad
- Open backed cockpit and opening roof
- Tender garage suitable for tender up to 3.25m
- Transom platform with electro-hydraulic raise/lower mechanism
- Teak deck material to transom platform, cockpit and steps to side deck
- Twin adjustable helm seats



LOWER DECK

- Galley with ceramic 3 burner hob, sink, combination microwave, full height fridge freezer and under floor storage bin
- Twin volvo ip600-440 engines
- New styling U-shaped seating to lower dinette

MAIN DECK WITH FOREDECK SUNBED CUSHIONS



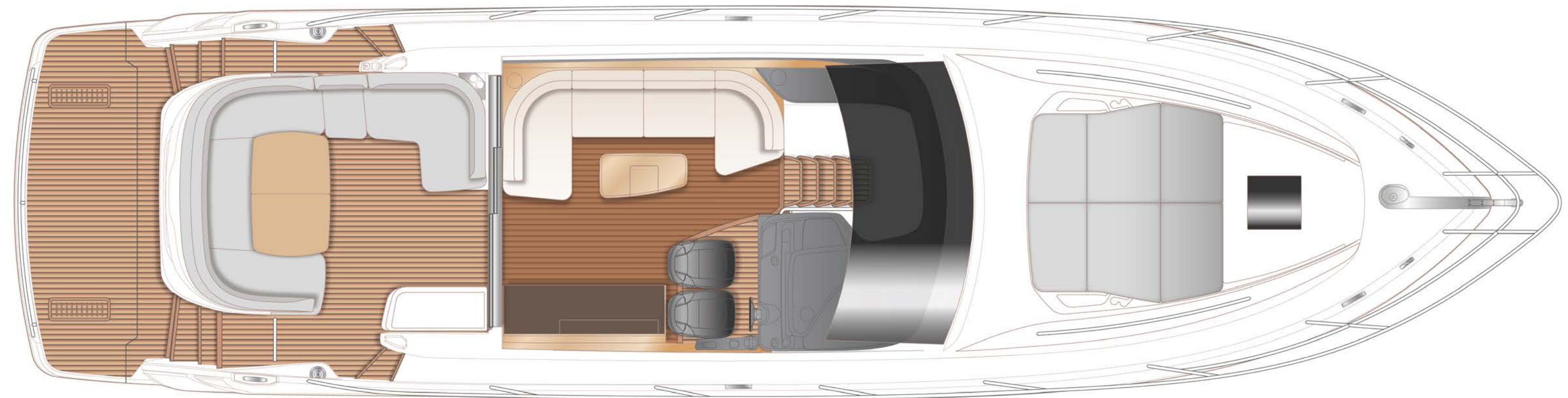
LOWER DECK WITH OPTIONAL TV IN CABINS

*1X open 1300 issue A

OPTIONAL LAYOUT

MAIN DECK

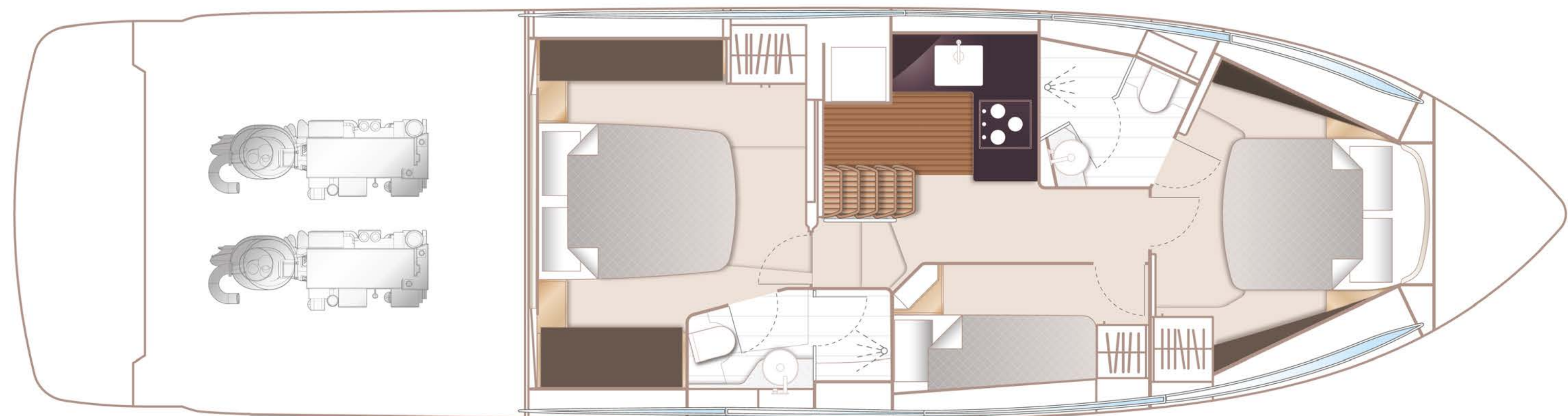
- Electro-hydraulic power lift system to transom platform (max. 350kg)
- Synthetic teak to transom platform, cockpit and steps to side deck
- Cockpit wetbar
- Infill seat
- Second station
- Bulwark gate
- Saloon coffee table



LOWER DECK

- Second access door (from passageway) fitted in forward bathroom
- Scissor berths in forward cabin in place of double
- Alternative 3 cabin layout
- Converting lower dinette table (convert to double berth with telescopic leg and infill cushion)
- Sideboard on master stateroom
- Twin volvo IPS 650-480 engines

MAIN DECK WITH OPTIONAL TV AND FOREDECK SUNBED CUSHIONS

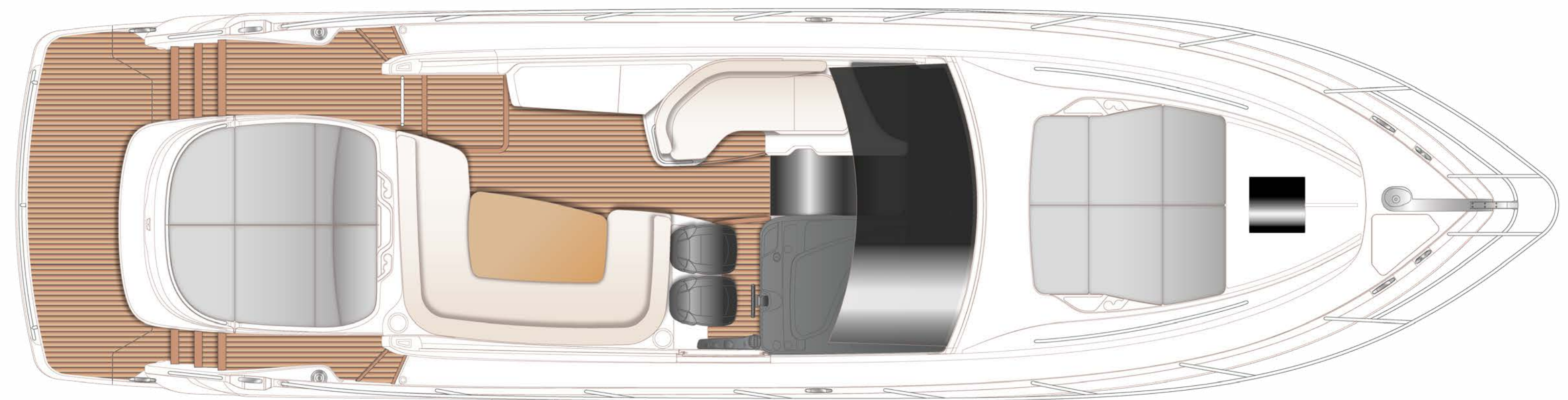


LOWER DECK WITH OPTIONAL TV IN CABINS

OPTIONAL LAYOUT - V50 OPEN

MAIN DECK

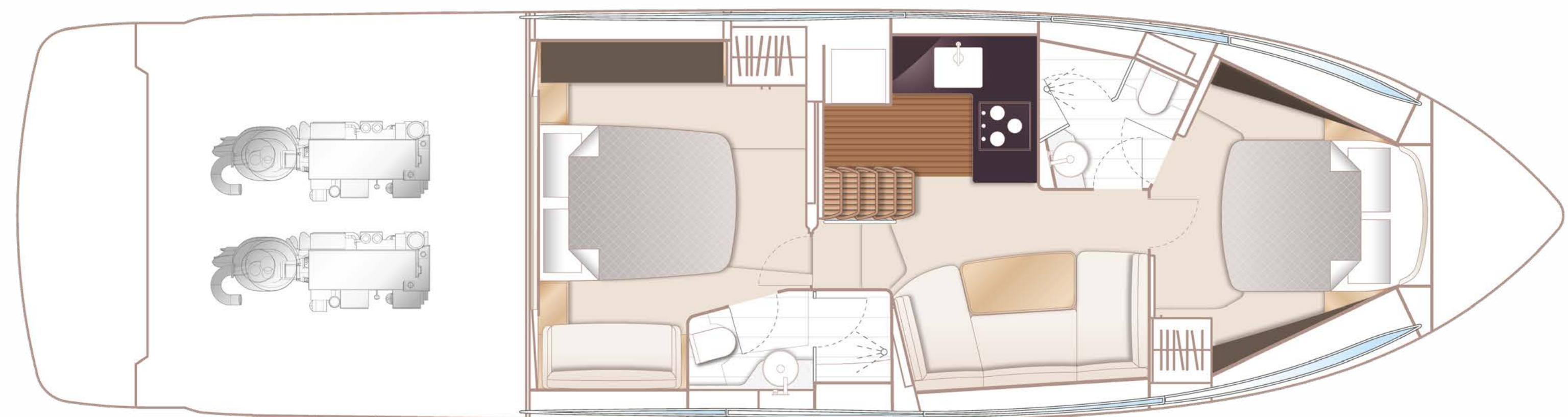
- Electro-hydraulic passarelle with automatic handrails
- Williams tender launch system
- Synthetic teak to transom platform, cockpit and steps to side deck
- Bbq in cockpit wetbar
- Icemaker in cockpit wetbar
- Upgrade to foredeck sunbed cushions with tilting back rest/seat conversion mechanism



LOWER DECK

- Twin volvo ips650-480 engines
- Second access door (from passageway) fitted in forward bathroom
- Scissor berths in forward cabin in place of double
- Alternative 3 cabin layout
- Coverting lower dinette table (convert to double berth with telescopic leg and infill cushion)
- Sideboard on Master Stateroom

MAIN DECK WITH FOREDECK SUNBED CUSHIONS



LOWER DECK WITH OPTIONAL TV IN CABINS

EXTERIOR



EXTERIOR



EXTERIOR - OPTIONAL ALLURE



EXTERIOR - V50 OPEN



MAIN DECK SALOON



MAIN DECK - V50 OPEN



MAIN DECK - V50 OPEN OPTIONAL ALLURE



LOWER DECK
MASTER STATEROOM



SPECIFICATION

PRINCIPAL DIMENSIONS

Length overall (incl. pulpit)	52'7"	16.02m
Length overall (excl. pulpit)	50'4"	15.35m
Beam	13'4"	4.08m
Draft (at full load) approx.	3'7"	1.09m
Displacement approx. (lighship)	15.9 tonnes	
Displacement approx. (half load)	19.4 tonnes	
Displacement approx. (LDC)	21.5 tonnes	
Fuel capacity	1550 litres / 341 gal / 410 USG	
Water capacity (incl. calorifier)	414 litres / 91 gal / 109 USG	
Hot water calorifiers	50 litres / 11 gal / 13 USG	
Black water tank	170 litres / 37 gal / 44 USG	

ENGINES - DIESEL

Twin Volvo IPS 600 (2 x 440mhp)	Maximum speed - up to 29-31 knots [†]
Twin Volvo IPS 650 (2 x 480mhp)	Maximum speed - up to 31-33 knots [†]

PRINCIPAL DIMENSIONS V50 OPEN

Length overall (incl. pulpit)	52'7"	16.02m
Length overall (excl. pulpit)	50'4"	15.35m
Beam	13'4"	4.08m
Draft (at full load) approx.	3'7"	1.09m
Displacement approx. (lighship)	15.9 tonnes	
Displacement approx. (half load)	19.1 tonnes	
Displacement approx. (LDC)	21.5 tonnes	
Fuel capacity	1550 litres / 341 gal / 410 USG	
Water capacity (incl. calorifier)	414 litres / 91 gal / 109 USG	
Hot water calorifiers	50 litres / 11 gal / 13 USG	
Black water tank	170 litres / 37 gal / 44 USG	

ENGINES - DIESEL

Twin Volvo IPS 600 (2 x 440mhp)	Maximum speed - up to 28-30 knots [†]
Twin Volvo IPS 650 (2 x 480mhp)	Maximum speed - up to 30-32 knots [†]

[†] Speeds are given at half load condition with boat to standard specification and with no additional equipment on board. Speeds are estimated and given in good faith but without warranty.

DETAILED SPECIFICATION

DECK FITTINGS

- Teak-laid transom platform, transom steps, cockpit deck and steps to side deck
- Reversible electric anchor winch with foredeck and helm position controls
- Self-stowing anchor system incorporating one 20kg/44lb Delta galvanised steel anchor with 40m galvanised 9.5mm gauge chain
- Stemhead roller with automatic anchor launch and retrieve
- Stainless-steel bow, stern and spring cleats
- Stainless-steel bow fairleads
- Stainless-steel pulpit and guardrails
- Stainless-steel coach roof handrails
- PVC rubbing band with stainless-steel insert
- Illuminated crown logo to transom
- Full set of IMCO navigation lights
- Riding light
- Remote control searchlight
- Single electric horn
- Fuel and water fillers
- Holding tank dockside discharge connection
- Deck hatch access to chain locker with fender stowage rack
- Foredeck escape hatch
- Foredeck drinks holders (4)
- Ensign socket

AFT COCKPIT AND BATHING PLATFORM

- Self-draining
- Upholstered aft U-shaped & forward L-shaped seating/dining area (optional seat infill)
- Cup holders to L-shaped seating (2)
- Folding teak dining table
- LED Overhead and low deck level lighting
- Cockpit cover
- Stainless-steel handrails
- Lockable transom hatch to stern lazarette with gas strut assistance
- Lockable access hatch to engine room
- 220/240v shore support inlet in locker
- Life raft stowage locker
- Transom bathing platform with integrated foldaway swimming ladder (with optional electro-hydraulic raise/lower mechanism – note when this option is selected it includes transom steps to access stern from bathing platform when in lowered position)
- Port & starboard transom gates leading to bathing platform
- New style hot and cold transom shower
- Storage lockers
- Waterproof speakers linked to saloon sound system
- Fender stowage rack in engine room/lazarette
- Seat locker containing remote fuel cocks, manual bilge pump with valve chest and manual controls for automatic fire extinguisher

HELM POSITION

- Twin upholstered seats, manually adjustable helm seat (fore/aft), fixed position navigator seat
- Volvo/Garmin 16” MFD, incorporating GPS chart plotter, engine instrumentation, fuel gauges, alarms & steering angle indicator.
- Electronic engine controls with integrated trim control
- Joystick manoeuvring control
- Power-assisted electric steering system and adjustable steering wheel
- VHF with DSC R/T with intercom
- Speed and distance log with sea temperature (integrated into Volvo/Garmin display)
- Echo sounder with alarm (integrated into Volvo/Garmin display)
- Single remote-control searchlight
- High speed magnetic compass
- Horn button to operate single electric horn
- Twin windscreen wipers
- Windscreen freshwater pressure wash
- Bilge pump controls with audible and visual alarm for bilge pumps (3)
- Electric drop window to starboard side
- Electric anchor winch with remote control
- Audible and visual alarm warning system (integrated into Volvo/Garmin display)
- Autopilot (integrated into Volvo/Garmin display)
- Engine room fire extinguisher warning system
- Drinks holder (2) at console, with additional drink holder (1) at base of navigator seat
- Toughened un-tinted glass screen
- Black mesh sunscreens for exterior use

- USB connection points
- Riding light, helm and nav light control switches
- Timber laid flooring

DECK SALOON

- U-shaped sofa with drawers
- Dining table
- Sideboard
- Refrigerator
- Curtains, blinds or sunscreens to all windows and doors
- LED overhead downlighters
- Access stairway to lower accommodation
- Electric opening roof
- Triple stainless-steel framed sliding doors to cockpit
- Fusion Apollo RA-670 audio unit (with external USB connection) with Wifi and Bluetooth connected to saloon Fusion 6” CL602 (2) speakers and cockpit speakers
- Timber flooring
- 2x 220/240v outlets
- 2x USB charging points

DETAILED SPECIFICATION

LOWER SALOON

- U-shaped sofa with single drawer and top loading storage (top loading storage is occupied by A/C unit when option is specified)
- Table
- Storage lockers
- LED overhead downlighters
- 24/240v main electrical control panel with battery isolation switches
- Fusion Apollo RA-670 audio unit (with external USB connection) with Fusion 6” CL602 (2) speakers
- Window with opening portlight (1) with manual tension venetian blinds
- Thermal heat alarm
- 1x 220/240v outlets
- 2x USB charging points

GALLEY

- Sylmar white Solid Surface worktop
- 2 ring ceramic hob
- Sylmar white Solid surface sink with Monobloc mixer tap (remains white for all options)
- Combination microwave/oven with grill
- Full height 270 litre fridge freezer, with deep freeze drawers
- Waste bin
- High/low storage cupboards, drawers and lockers
- Timber-laid flooring
- Window with opening portlight and manual tension venetian blind
- Hob extractor fan

- Cutlery & crockery storage
- Chopping board
- 220/240v power outlets (4)
- LED overhead task lighting (24v), concealed light & night lighting
- Storage bin under galley sole

ACCOMMODATION

- All cabins and bathrooms feature opening portholes
- All cabins feature 220/240v power points
- All bathrooms feature electric freshwater toilets and 240v shaver points

MASTER STATEROOM

- Large double bed with bedside tables and drawers below
- Wardrobe with shelves & full-length mirror
- Drawers and storage lockers
- Sideboard
- LED overhead and individual berth lights (24v)
- Starboard side sofa
- Panoramic windows in toughened glass with opening ports and manual tension venetian blinds
- Fitted carpet
- 4x USB charging points
- 2x 220/240v outlets

EN-SUITE BATHROOM

- Solid Surface worktop
- Wash basin with Monobloc mixer tap
- Separate stall shower with extractor fan and auto pump out
- Mirror
- LED overhead and concealed lighting (24v)
- Storage locker
- Window with opening portlight and manual tension venetian blinds
- Solid Surface flooring
- Bathroom accessories
- 220/240v shaver socket

FORWARD STATEROOM

- Large double bed with drawers below (option of scissor berths)
- Wardrobe with full length mirror
- Deck hatch
- Storage lockers
- LED overhead (24v)
- Window with opening portlights and manual tension venetian blinds
- 1x 220/240v outlets
- 2x USB connection points
- Fitted carpets

EN-SUITE BATHROOM

- Solid Surface worktops
- Wash basin with Monobloc mixer tap
- Separate stall shower with extractor fan & automatic pump out
- Mirror

- LED overhead and concealed lighting (24v)
- Storage locker
- Window with opening portlight and manual tension venetian blinds
- Solid Surface flooring
- Bathroom accessories
- 220/240v shaver socket

POWER AND DRIVE SYSTEM

- Twin Volvo IPS engines (driving contra rotating propellers via pod drive)
- Power-assisted steering (electrical)
- Electronic engine controls
- Joystick manoeuvring system
- Volvo active corrosion protection system for pod drive
- Engine room extractor fans with electronic time delay
- Volvo interceptor trim system integrated into Volvo engine system (integrated into Volvo/Garmin display)
- Engine room lighting
- Access from cockpit hatch
- Fresh water supply point in engine room
- Engine room insulation
- High volume air intakes
- Engine beds integrally moulded with hull for strength and vibration absorption
- Bulkheads integrally bonded
- Engines flexibly mounted
- Automatic fire extinguisher with remote override
- Automatic/manual bilge pumps
- 24v to 12v converters for certain navigation and radio circuits

DETAILED SPECIFICATION

ELECTRICAL SYSTEMS

- 24 VOLT:
- 4 x heavy-duty batteries for engine starting
 - 4 x heavy-duty auxiliary batteries
 - Engine alternators charge via split charge relays to isolate engine start batteries from auxiliaries and ensure efficient charging of both battery banks.
 - 40-amp 24v float battery charger
 - Battery paralleling system (for engine start back-up)
 - Remote battery master switches with control switch at main panel
 - Circuit breakers on all circuits
 - Galvanic isolation system

- 220/240 VOLT:
- Shore support inlet (32A)
 - Power points in owner’s stateroom, forward guest cabin, galley, lower and upper saloon
 - Polarity check system
 - Earth leakage safety trip
 - Shaver points in both bathrooms
 - 4kW generator
 - 12v battery charger

FUEL SYSTEM

- Twin fuel tanks (in NS8 marine grade alloy) with interconnection system
- Fuel fillers on both side decks
- High-capacity duplex fuel filters with water traps with change-over valves, water contamination warning integrated

- into Volvo/Garmin display (integrated into Volvo/Garmin display)
- Remote fuel cocks in cockpit seat locker for main engines & generator
 - Fuel gauges integrated into Volvo/Garmin display

WATER SYSTEM

- Water capacity totalling 364 litres /80 gallons/96 US gallons plus 50 litres/ 11 gallon/13 US gallon hot water calorifier
- Water heated by engine and 240v immersion heater
- Automatic water pump with filter
- Pump main circuit breaker at AC/DC switch panel
- Water level gauge
- Deck filler
- Electric quiet flush freshwater WC system with holding tank, content gauge and low noise manual overboard discharge, as well as dockside discharge.
- Fire extinguishers

BILGE PUMPS

- Automatic electric bilge pumps with manual override (3 in all)
- High-capacity manual bilge pump in cockpit seat locker with valve system and suction points in engine room and accommodation space
- Electric bilge pumps to have controls, warning lights with audible alarm and “pump out” isolation at helm

OTHER STANDARD EQUIPMENT

- Fenders (6)
- Mooring warps (4)
- First aid kit
- Boat hook
- Quilted bedspreads for both cabins
- Tool kit
- Owner’s manual and engine manual
- Anchor winch backup handle
- Ensign staff
- Set of towels
- Ships document case

FINISHES

- Furniture finished in a choice of Rovere oak and Alba oak in satin lacquer finish as standard. Silver oak or walnut in satin or gloss lacquer finish available as an option.
- Galley and bathroom worktops in Solid Surface
- Timber-laid galley, saloon & helm floors
- Bathroom floors in Solid Surface
- Manual tension venetian blinds to all windows and portholes, curtains to saloon doors
- Teak laid decks to transom platform, transom steps, cockpit deck and steps to side deck
- Choice of high-quality carpets & upholstery fabrics from extensive range

Please note the right is reserved to add modify or delete from this preliminary specification.

DETAILED SPECIFICATION - V50 OPEN

DECK FITTINGS

- Teak-laid transom platform, cockpit deck and steps to side deck
- Reversible electric anchor winch with foredeck and helm position controls
- Self-stowing anchor system incorporating one 20kg/44lb Delta galvanised steel anchor with 40m galvanised 9.5mm gauge chain
- Stemhead roller with automatic anchor launch and retrieve
- Stainless-steel bow, stern and spring cleats
- Stainless-steel bow fairleads
- Stainless-steel pulpit and guardrails
- Stainless-steel coach roof handrails
- PVC rubbing band with stainless-steel insert
- Illuminated crown logo to transom
- Full set of IMCO navigation lights
- Riding light
- Remote control searchlight
- Single electric horn
- Fuel and water fillers
- Holding tank dockside discharge connection
- Deck hatch access to chain locker with fender stowage rack
- Foredeck escape hatch
- Foredeck drinks holders (4)
- Ensign socket

AFT COCKPIT AND BATHING PLATFORM

- Self-draining
- Upholstered U-shaped seating/dining area
- Folding teak dining table
- LED Overhead and deck level lighting
- Cockpit cover
- Stainless-steel handrails
- Wet bar with sink, storage, refrigerated coolbox
- Lockable access hatch to engine room
- 220/240v shore support inlet in locker
- Life raft stowage locker
- Transom platform with integrated swimming ladder (with electro-hydraulic raise/lower mechanism)
- Transom steps to access stern from bathing platform when in lowered position
- Aft sunbed with drinks holders (4)
- Tender garage with electro-hydraulic door and electric winch for tender up to 3.25m
- Transom door leading to bathing platform
- New style hot and cold transom shower
- Storage lockers
- Waterproof speakers linked to saloon Fusion Apollo RA-670 sound system
- Fender stowage rack in engine room/lazarette
- Cockpit locker containing remote fuel cocks, manual bilge pump with valve chest and manual controls for automatic fire extinguisher

HELM POSITION

- Twin upholstered seats, manually adjustable helm seat (fore/aft) with sit/stand facility, fixed position navigator seat
- J-shaped companionway seating with drinks holders (2)
- Volvo/Garmin 16” MFD, incorporating GPS chart plotter, engine instrumentation, fuel gauges, alarms & steering angle indicator.
- Electronic engine controls with integrated trim control
- Joystick manoeuvring control
- Power-assisted steering system and adjustable steering wheel
- VHF with DSC R/T with intercom
- Speed and distance log with sea temperature (integrated into Volvo/Garmin display)
- Echo sounder with alarm (integrated into Volvo/Garmin display)
- Single remote-control searchlight
- High speed magnetic compass
- Horn button to operate single electric horn
- Twin windscreen wipers
- Windscreen freshwater pressure wash
- Bilge pump controls with audible and visual alarm for bilge pumps (3)
- Electric drop window to starboard side
- Electric anchor winch with remote control
- Audible and visual alarm warning system (integrated into Volvo/Garmin display)
- Autopilot (integrated into Volvo/Garmin display)
- Engine room fire extinguisher warning system
- Drinks holder (2) at console, with additional drink holder (1) at base of navigator seat

- Toughened un-tinted glass screen
- Black mesh sunscreens for exterior use
- USB connection points
- Riding light, helm and nav light control switches
- Teak laid flooring

LOWER SALOON

- U-shaped sofa with single drawer and top loading storage (top loading storage is occupied by A/C unit when option is specified)
- Table
- Storage lockers
- LED overhead downlighters
- 24/240v main electrical control panel with battery isolation switches
- Skylight
- Fusion Apollo RA-670 audio unit (with external USB connection) with Fusion 6” CL602 (2) speakers
- Window with opening portlight (1) with manual tension venetian blinds
- Thermal heat alarm
- 1x 220/240v outlets
- 2x USB charging points

DETAILED SPECIFICATION - V50 OPEN

GALLEY	MASTER STATEROOM	FORWARD STATEROOM	POWER AND DRIVE SYSTEM
<ul style="list-style-type: none">• Sylmar White Solid Surface worktop• 2 zone ceramic hob• Sylmar White Solid Surface sink with Monobloc mixer tap (sink remains Sylmar white for all options)• Combination microwave/convection oven with grill• Full height 270lt fridge/freezer• Waste bin• High/low storage cupboards, drawers and lockers• Timber-laid flooring• Under floor storage bin• Window with opening portlight and manual venetian blind• Hob extractor fan• Cutlery and crockery storage• Chopping board• 220/240v power outlets (4)• LED overhead task lighting (24v), concealed light and night lighting• Storage bin under galley sole	<ul style="list-style-type: none">• Large double bed with bedside tables drawers below• Wardrobe with shelves and full-length mirror• Drawers and storage lockers• Sideboard• LED overhead and individual berth lights (24v)• Starboard side sofa• Panoramic windows in toughened glass with opening ports and manual tension venetian blinds• Fitted carpet• 220/240v outlets (2)• USB charging points (4)	<ul style="list-style-type: none">• Large double bed with drawers below (option of scissor berths)• Wardrobe with full length mirror• Deck hatch• Storage lockers• LED overhead (24v)• Window with opening portlights and manual tension venetian blinds• 220/240v outlets (1)• USB connection points (2)• Fitted carpets	<ul style="list-style-type: none">• Twin Volvo IPS engines (driving contra rotating propellers via pod drive)• Power-assisted steering (electrical)• Electronic engine controls• Joystick manoeuvring system• Volvo active corrosion protection system for pod drive• Engine room extractor fans with electronic time delay• Volvo interceptor trim system integrated into Volvo engine system (integrated into Volvo/Garmin display)• Engine room lighting• Access from cockpit hatch• Fresh water supply point in engine room• High volume air intakes• Engine beds integrally moulded with hull for strength and vibration absorption• Bulkheads integrally bonded• Engines flexibly mounted• Automatic fire extinguisher with remote override• Automatic/manual bilge pumps
ACCOMMODATION	EN-SUITE BATHROOM	EN-SUITE BATHROOM	
<ul style="list-style-type: none">• All cabins and bathrooms feature opening portholes• All cabins feature 220/240v power points• All bathrooms feature electric freshwater toilets and 240v shaver points	<ul style="list-style-type: none">• Solid Surface worktop• Wash basin with Monobloc mixer tap• Separate stall shower with extractor fan and auto pump out• Mirror• LED overhead and concealed lighting (24v)• Storage locker• Windows with opening portlight and manual tension venetian blind• Solid Surface flooring• Bathroom accessories• 220/240v shaver socket	<ul style="list-style-type: none">• Solid Surface worktop• Wash basin with Monobloc mixer tap• Separate stall shower with extractor fan and automatic pump out• Mirror• LED overhead and concealed lighting (24v)• Storage locker• Window with opening portlight and manual tension venetian blinds• Solid Surface flooring• Bathroom accessories• 220/240v shaver socket	

DETAILED SPECIFICATION - V50 OPEN

ELECTRICAL SYSTEMS

- 24 VOLT:
- 4 x heavy-duty batteries for engine starting
 - 4 x heavy-duty auxiliary batteries
 - Engine alternators charge via split charge relays to isolate engine start batteries from auxiliaries and ensure efficient charging of both battery banks.
 - 40-amp 24v float battery charger
 - Battery paralleling system (for engine start back-up)
 - Remote battery master switches with control switch at main panel
 - Circuit breakers on all circuits
 - Galvanic isolation system
 - 12v voltage dropper for certain navigation and radio circuits
- 220/240 VOLT:
- 7kW diesel generator with own starting battery, remote controls and specially silenced exhaust
 - Automatic fire extinguisher situated by generator
 - Shore support inlet (32A)
 - Power points in owner’s stateroom, forward guest cabin, galley and lower saloon
 - Generator/ shore support change-over switch
 - Polarity check system
 - Earth leakage safety trip
 - Shaver points in both bathrooms
 - 4kW generator
 - 12v battery charger

FUEL SYSTEM

- Twin fuel tanks (in NS8 marine grade alloy) with interconnection system
- Fuel fillers on both side decks
- High-capacity duplex fuel filters with water traps with change-over valves, water contamination warning integrated into Volvo/Garmin display (integrated into Volvo/Garmin display)
- Remote fuel cocks in cockpit locker for main engines and generator
- Fuel gauges integrated into Volvo/Garmin display

WATER SYSTEM

- Water capacity totalling 364 litres /80 gallons/96 US gallons plus 50 litres /11 gallon/13 US gallon hot water calorifier
- Water heated by engine and 240v immersion heater
- Automatic water pump with filter
- Pump main circuit breaker at AC/DC switch panel
- Water level gauge
- Deck filler
- Electric quiet flush freshwater WC system with holding tank, content gauge and low noise manual overboard discharge, as well as dockside discharge

FIRE EXTINGUISHERS

- Automatic fire extinguisher in engine room and generator space
- Hand-operated fire extinguishers (4) in: owner’s stateroom, forward guest cabin, galley & upper saloon

BILGE PUMPS

- Automatic electric bilge pumps with manual override (3 in all)
- High-capacity manual bilge pump in cockpit locker with valve system and suction points in engine room and accommodation space
- Electric bilge pumps to have controls, warning lights with audible alarm and “pump out” isolation at helm

OTHER STANDARD EQUIPMENT

- Fenders (6)
- Mooring warps (4)
- Ensign staff
- First aid kit
- Boathook
- Functional fitted bedsheets as standard for both cabins
- Tool kit
- Owner’s manual and engine manual
- Anchor winch backup handle
- Set of towels
- Ships document case

FINISHES

- Furniture finished in a choice of Rovere oak and Alba oak in satin lacquer finish as standard. Silver oak or walnut in satin or gloss lacquer finish available as an option.
- Galley and bathroom worktops in Solid Surface
- Timber-laid floors to galley, saloon & helm
- Bathroom floors in Solid Surface
- Venetian blinds to all windows and portholes
- Choice of high-quality carpets and upholstery from extensive range

Please note the right is reserved to add modify or delete from this preliminary specification.

FOR FURTHER INFORMATION

PLEASE CONTACT:

Your respective sales manager

Information disclaimer:

The details contained in this document were correct at the time of publication. Princess Yachts Limited reserves the right to modify or change the specification.

