

PRINCESS Y85 MOTOR YACHT
ADVANCED INFORMATION PACK





/

CONTENTS

/

PRINCESS Y85 MOTOR YACHT

Introduction	3
Exterior Design	4
Interior Design	11
Layouts	18
Specification	22



PRINCESS Y75 MOTOR YACHT

INTRODUCTION

The all-new Y85 Motor Yacht is a yacht with an imposing presence, her sleek profile reflects the latest thinking in Motor Yacht design whilst retaining the elegance of her smaller counterparts. This new model resets the benchmark for exterior Motor Yacht refinement, with luxurious finishes and materials used in abundance to elevate the motor yacht cruising experience.

The flybridge is designed for entertaining al fresco with a large dining area opposite a well-equipped wet bar, further complimented by a large aft sunpad and forward facing seating areas either side of the helm position. Forward on the main deck is an impressive walkthrough seating area with additional sunpad.

The sociable arrangement of the single-level main deck provides an expansive entertaining space with three separate seating areas including a large cockpit dining area, ample U-shaped seating area aft of the saloon and formal dining area adjacent to the well-equipped galley.

The layout is designed to ensure the upmost privacy for guests with a separate wheelhouse and ability for the crew to move discreetly around the yacht, with the flexibility to open the galley to the aft saloon or separate it using an elegant electrically operated divider. Below deck guests are accommodated across four beautifully appointed ensuite cabins including a full beam master suite, two double cabins and one twin. Aft she features class leading crew quarters with two cabins and a spacious crew mess.

EXTERIOR DESIGN



PROFILE



WHITE HULL WITH HARDTOP

EXTERIOR



EXTERIOR COCKPIT



EXTERIOR FOREDECK



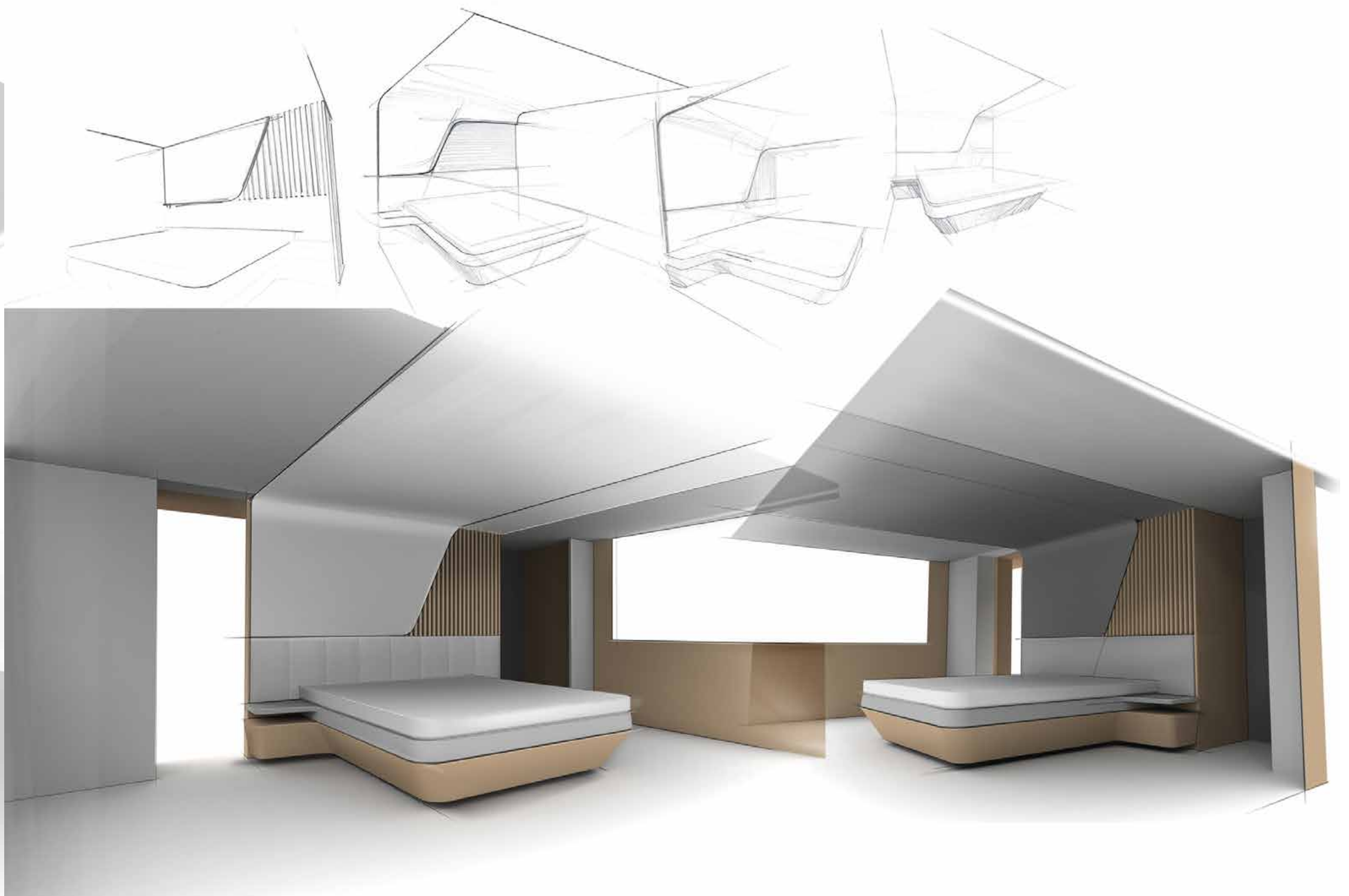
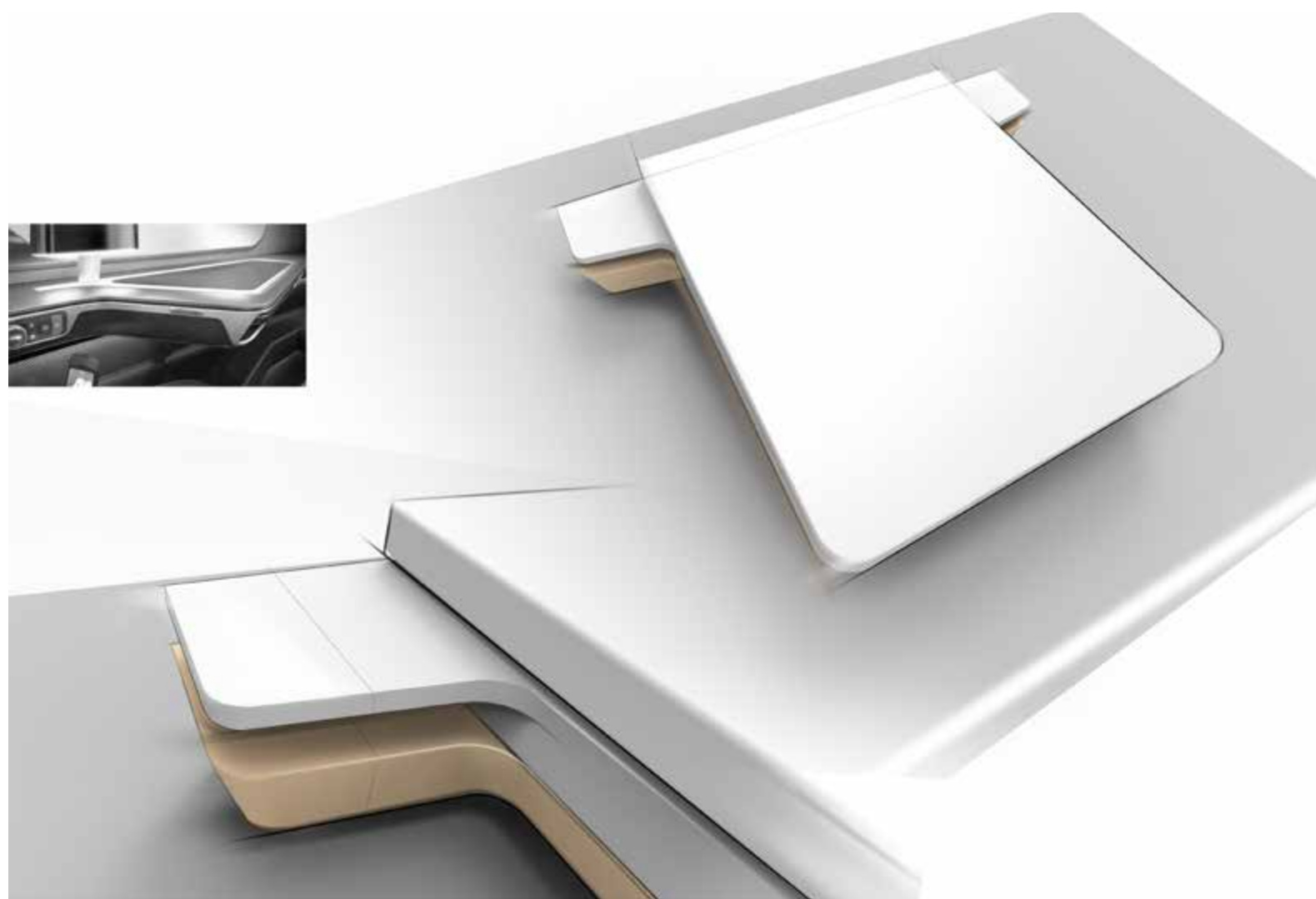
EXTERIOR FLYBRIDGE



EXTERIOR FLYBRIDGE



INTERIOR DESIGN



INTERIOR SALOON



Image showing Silver Oak timber option

INTERIOR SALOON



Image showing Walnut Satin timber option

INTERIOR STATEROOM



Image showing Silver Oak timber option

INTERIOR STATEROOM



Image showing Walnut Satin timber option

INTERIOR
DINING AREA



INTERIOR

G



LAYOUTS

Highlights of the Princess Y85 Motor Yacht:

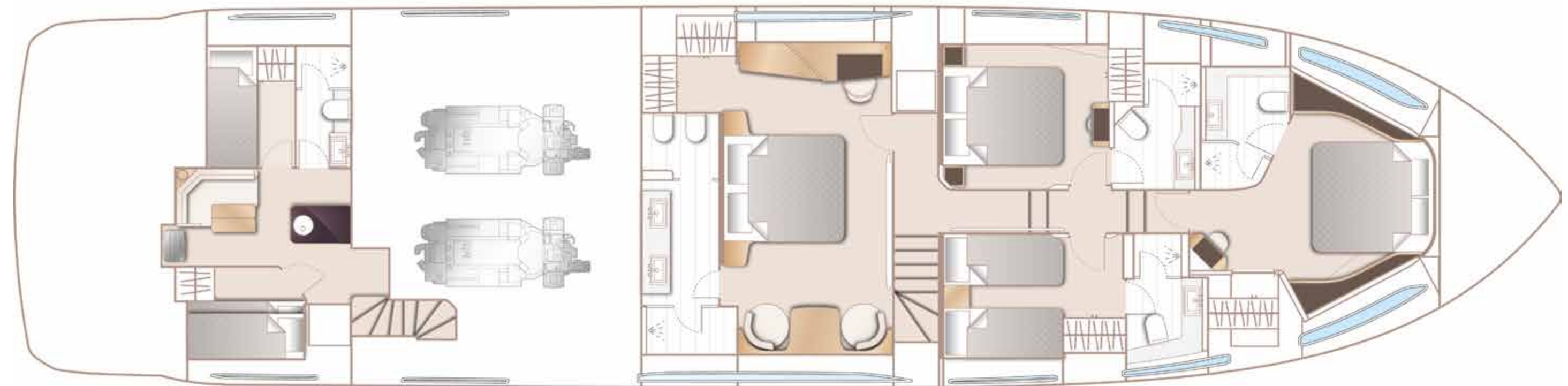
- Expansive main deck layout with flexible galley arrangement for open family boating or closed for more formal occasions with full crew
- Beautifully appointed master stateroom with athwartship bathroom incorporating large stall shower (and optional bath) and separate toilet compartment
- Separate enclosed wheelhouse
- Crew quarters with crew mess, captain's cabin, bunk cabin and bathroom with separate stall shower
- Main deck day head
- Side access doors to side decks from helm and galley areas
- Teak-laid flybridge, deck areas and bathing platform
- Wide side decks and high bulwarks
- Foredeck seating and sunbathing area with adjustable headrests (convertible to aft facing U-shaped seating area)
- High quality finish including granite-quartz flooring in all guest bathrooms



FLYBRIDGE

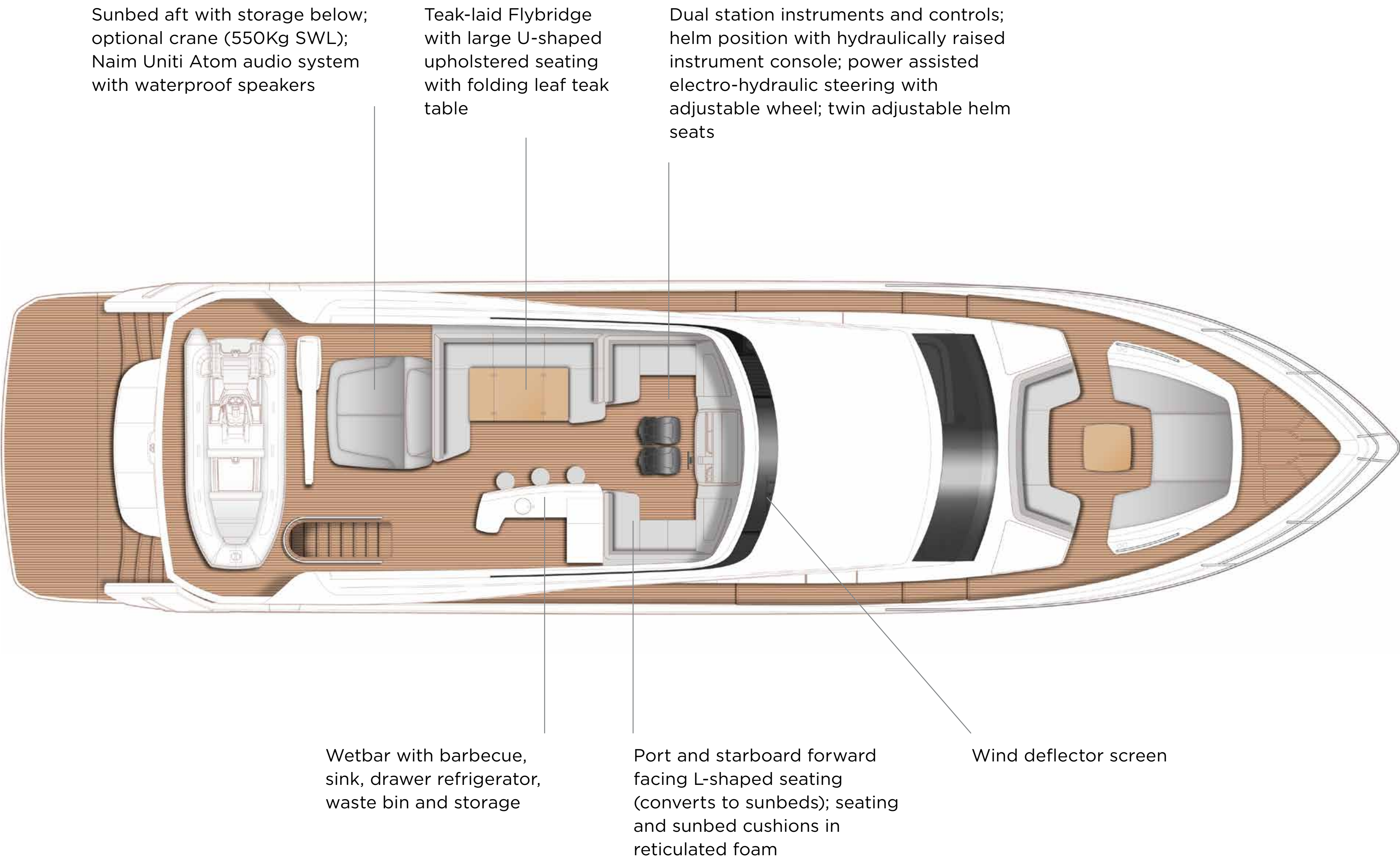


MAIN DECK



LOWER DECK

FLYBRIDGE LAYOUT



MAIN DECK LAYOUT

Deck saloon with twin L-shaped sofas and integrated drawers, two coffee tables, two seater sofa to starboard with integrated drawers, UHD LED TV (55”), electric roller sheer blinds to outboard windows and electric curtains on wave track to doors; Naim Uniti Atom audio system with ceiling mounted speakers

Galley with Granite/Quartz worktop, 4-zone induction hob, hob extractor, combination microwave/convection oven with grill, twin-bowl stainless-steel sink with mixer tap, full height refrigerator/deep freezer, icemaker and dishwasher; electric venetian blinds to all windows and pantograph door to port side deck

Teak-laid foredeck with U-shaped seating area, and sunbathing area with integrated adjustable teak headrests and storage - converts to aft facing U-shaped seating area; reticulated foam to seating and sunbed

Electro-hydraulic raise/lower teak laid bathing platform (550Kg SWL) with manual retractable bathing ladder



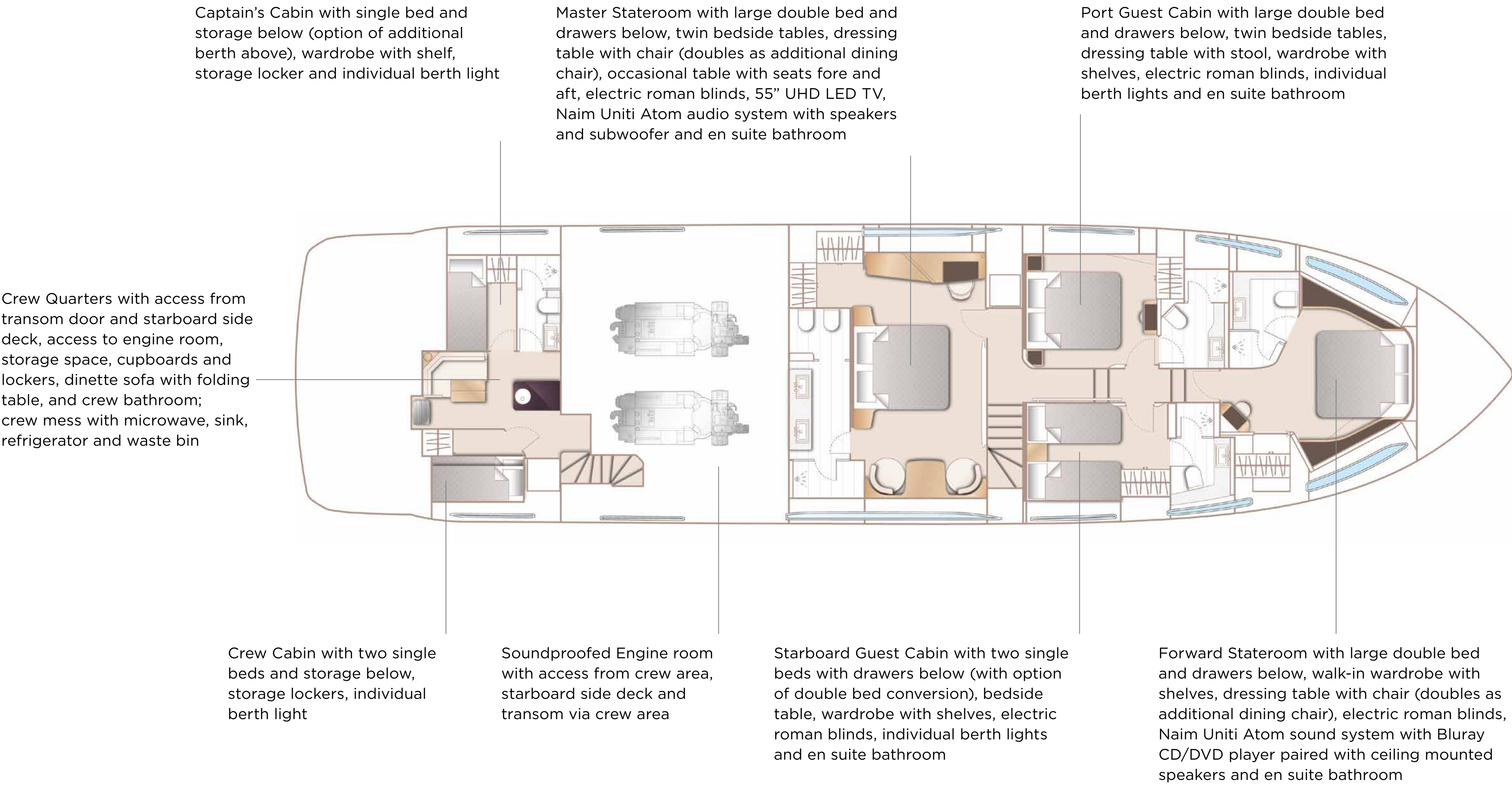
Teak-laid cockpit with upholstered U-shaped seating, reticulated foam to seating and folding teak table

Dining area with expandable dining table and 8 dining chairs; sideboard unit with bottle, glass storage and refrigerator; electric roller sheer blinds to forward starboard window, electric curtains on wave track to panoramic window and day head

Wheelhouse with twin leather upholstered helm seats with fore and aft adjustment for helmsman, intercom to flybridge, automatic fog horn with loudhailer, chart storage and drinks holders

Reversible electric anchor winches with foredeck, main helm and flybridge controls; twin anchor system incorporating a Primary anchor - 80kg Galvanised Claw anchor with 100m of 14mm galvanised chain and a Secondary anchor - 50kg Galvanised Claw anchor with 70m of 14mm galvanised chain

LOWER DECK LAYOUT



SPECIFICATION

PRINCIPAL DIMENSIONS

Length overall (Incl. pulpit)	84' 6"	25.75m
Length overall (excl. pulpit)	86'0"	26.2m
Beam	20'8"	6.3m
Draft (at full load) approx	5'9.5"	1.77m
Displacement approx (lightship)	60.7 tonnes	
Displacement approx (halfload)	66.5 tonnes	
Fuel capacity	11000 litres / 2420 gal / 2905 USG	
Water capacity (excl. calorifier)	1295 litres / 285 gal / 342 USG	
Hot Water calorifiers	205 litres/ 45 gallon / 54 USG	
Black water tank	600 litres / 132 gal / 158 USG	

ENGINES - DIESEL

MAN V12 (2 x 1800mhp)	Maximum speed - up to 30 - 32 knots [†]
MAN V12 (2 x 1900mhp)	Maximum speed - up to 31 - 33 knots [†]

[†] Speeds are given at half load condition with boat to standard specification and with no additional equipment on board. Speeds are estimated and given in good faith but without warranty.

FOR FURTHER INFORMATION

PLEASE CONTACT:

Your respective sales manager

Information disclaimer:

The details contained in this document were correct at the time of publication. Princess Yachts Limited reserves the right to modify or change the specification.



