



S60

S60



Powerful yet elegant, the new S60 is unmistakably S Class. Her sleek exterior styling with sculpted hull glazing generates a dynamic, agile stance. With an optimised hull form achieving greater efficiency she can reach speeds of up to 38 knots. When at anchor her generous deck areas provide space for relaxation including a foredeck seating and sunbathing area, whilst a tender or jet ski can be quickly launched and stowed in the large stern garage. Her sociable main deck features a galley aft arrangement with open-plan dining area, and sliding doors with a fully opening window leading out to the cockpit. Below deck six guests are accommodated across an en suite full-beam master stateroom and two further guest cabins. Blending iconic design, exceptional engineering and unrivalled craftsmanship the new S60 provides an unforgettable cruising experience.

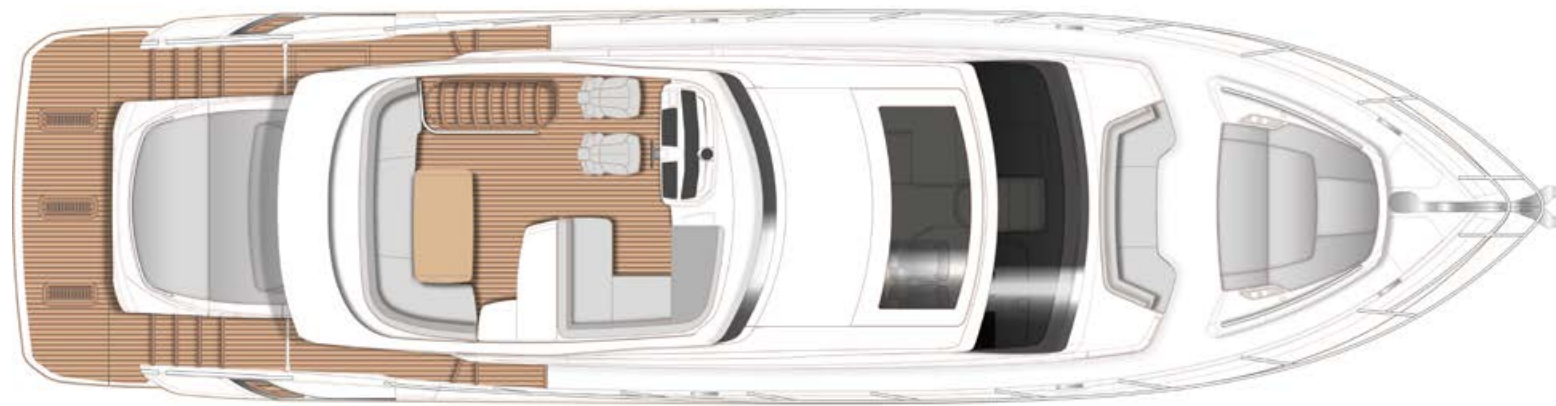
Puissant mais élégant, on ne s'y trompe pas ; le nouveau S60 est un S Class. Sa ligne pleine d'allure et sa coque profilée lui donnent énergie et agilité. Grâce à son dessin de carène optimisé garantissant encore plus d'efficacité, il atteint les 38 nœuds. Au mouillage, son pont généreux ménage des espaces de détente, notamment une banquette et un bain de soleil sur le pont avant, tandis que le grand garage à l'arrière permet de sortir et de ranger en un clin d'œil une annexe ou une jet ski. La disposition du pont principal est conviviale : cuisine à l'arrière avec un coin repas ouvert et portes coulissantes et fenêtre s'ouvrant complètement pour donner sur le cockpit. Au pont inférieur, six personnes se répartissent entre la cabine du propriétaire sur toute la largeur du yacht, dotée d'une salle de bain privative, et deux autres cabines d'invités. Alliance d'un design emblématique, de l'excellence technique et d'un savoir-faire inégalé, le nouveau S60 propose une expérience de croisière inoubliable.

يتميز اليخت الجديد S60 بالقوة والأناقة، وهو من الواضح انه ينتمي إلى الفئة S عن جدارة واستحقاق. ويذكر هيكل اليخت بأناقته الخارجية وبزجاجه البراق الذي يضفي عليه مظهراً ديناميكياً رشيقاً. كما انه بفضل شكل الهيكل ذات التصميم الانسيابي الرشيق، تصل سرعة اليخت إلى 38 عقدة. خلال ساعات الإرساء، توفر مساحاته الداخلية الرحبة حيزاً للاسترخاء تشمل مساحة جلوس أمامية ومساحة أخرى لحمام شمس، كذلك من الممكن حفظ قارب أو دراجة مياه في مؤخرة القارب وإطلاقهما بسهولة. يشمل السطح الرئيسي لليخت مطبخاً عند الخلف مع مساحة مفتوحة لتناول الطعام، كما انه يحتوي على أبواب منزلقة مع نافذة تؤدي إلى مقصورة القيادة. يتسع الطابق السفلي لإقامة ستة ضيوف في غرفة نوم ماستر مزودة بحمام وقمرتين أخريين مخصصتين أيضاً للضيوف. يعتبر هذا اليخت مزيج من التصميم المبدع والهندسة المميزة والمهارة التي لا تضاهى، ليمنحك بذلك يخت S60 تجربة إبحار لا تُنسى.



Potente ma elegante, la nuova S60 è inconfondibilmente Classe S. Il suo design esterno elegante e il profilo della carena denotano dinamismo ed agilità. La forma della carena ottimizzata consente una maggiore efficienza e l'imbarcazione può raggiungere una velocità fino a 38 nodi. Lo spazio per il relax è notevole, a prua prua con posti a sedere e una area per prendere il sole, mentre un tender o una moto d'acqua possono essere rapidamente ricoverati nel grande garage di poppa. Il suo ponte principale è molto confortevole e dispone di una cucina a poppa con area pranzo e porte scorrevoli con una finestra completamente apribile che conduce nel pozzetto. Sottocoperta sei ospiti sono alloggiati a fianco di una cabina armatoriale con bagno e due ulteriori cabine ospiti. Una combinazione eccezionale di design ed ingegneria avanzata. La nuova S60 offre un'esperienza di crociera indimenticabile.

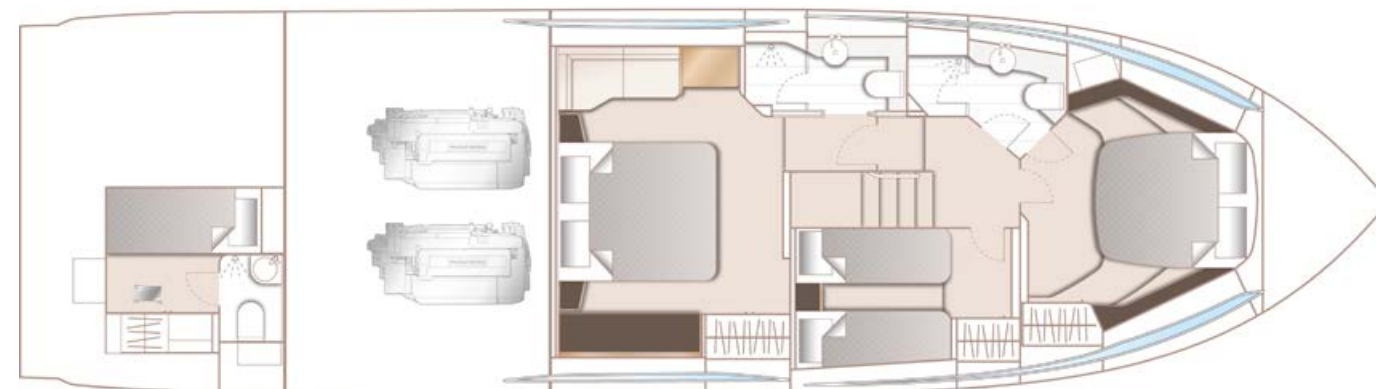
Элегантная и мощная новая Princess S60 сочетает в себе все преимущества яхт S-класса. Изящный корпус и его уникальное панорамное остекление выдают в ней динамику и маневренность. Оптимизированная форма корпуса яхты позволяет развивать скорость до 38 узлов, а бросив якорь, можно в полной мере насладиться спокойным отдыхом на просторной палубе, например в зоне для отдыха и принятия солнечных ванн в кокпите. Благодаря вместительному гаражу в кормовой части, вы без труда сможете взять с собой в путешествие тендер или гидроцикл. На главной палубе, где с комфортом можно разместиться большой компанией, предусмотрен удобный камбуз с открытой обеденной зоной, оборудованный сдвижными дверями и откидным окном в кокпит. Мастер-каюта во всю ширину яхты с персональной ванной комнатой и две дополнительные гостевые каюты, расположенные на нижней палубе, рассчитаны на шесть персон. Новая модель S60 сочетает в себе узнаваемый дизайн, исключительный уровень инженерного мастерства и непревзойденное качество исполнения. Каждое путешествие с ней станет незабываемым.



SPORTBRIDGE



MAIN DECK



LOWER DECK

PRINCIPAL DIMENSIONS

Length overall (incl. pulpit)	62ft 11in (19.17m)
Length overall (excl. pulpit)	62ft 1in (18.92m)
Beam	16ft 0in (4.87m)
Draft	5 ft 0in (1.5m)
Displacement approx.	27,200kg (59,966lbs)*
Fuel capacity	705 gal/845 US gal/3,200l
Water capacity (incl. calorifier)	132 gal/159 US gal/603l

DECK FITTINGS

- Teak-laid transom platform, cockpit deck, sportbridge stairs and stairs to side decks
- Reversible electric anchor winch with foredeck and helm position controls
- Self-stowing 32kg/77lbs Delta anchor with 40m of chain
- Foredeck seating and sunbathing area
- Stainless-steel cleats, fairleads and handrails
- Remote control searchlight
- Freshwater deck/anchor wash
- Storage lockers for rope, fenders and foredeck sunbed cushions
- LED deck level lighting

COCKPIT

- U-shaped seating with teak folding table
- Sunbed aft with garage below (3.3m tender)
- Twin transom gates leading to bathing platform with electro-hydraulic raise/lower mechanism, foldaway swimming ladder and hot and cold shower
- Speakers linked to deck saloon sound system
- Lockable gas strut assisted hatches to engine room, lazarette and optional crew cabin
- Liferaft storage locker
- Locker housing 240v shore support inlet
- Locker with remote fuel cocks
- Cockpit cover

SPORTBRIDGE

- Helm position with raise/lower console, repeat navigation equipment including radar/chartplotter and engine instrumentation
- L-shaped seating area with teak table
- L-shaped seat with sunbed conversion
- Wetbar with sink, coolbox, storage and optional barbecue
- Stereo radio, iPod/MP3 with waterproof speakers

LOWER HELM POSITION

- Twin helm seats with fore and aft adjustment for helmsman
- Electric opening windows at helm position and port side
- Full engine instrumentation including fuel gauges, exhaust temperature, fuel contamination alarms and rudder position indicator
- Navigation system including colour radar, GPS and chartplotter, VHF/RT, speed and distance log, echo sounder with alarm, autopilot and high speed magnetic compass
- Controls for bow thruster, windscreen wipers, bilge pump, anchor winch and trim tabs (with indicator)
- 24v and 240v control panel
- Remote control searchlight
- Red night lighting
- Toughened glass screen (clear for night vision)

DECK SALOON

- U-shaped sofa and coffee table
- Entertainment centre incorporating 48" LED TV on electric raise/lower mechanism and DVD, radio/MP3 system with surround sound system
- Sideboard unit with glass and bottle storage and refrigerator
- L-shaped dining area with folding table
- Skylights with reflecto-glass and sliding blinds (option of powered opening roof)
- Stainless steel framed sliding doors and electric powered aft window to cockpit

GALLEY

- 3-zone ceramic hob
- Combination microwave/conventional oven with grill
- Stainless steel sink with mixer tap
- Full-height fridge/freezer (270l)
- Storage cupboards, drawers and lockers

ACCOMMODATION

- All cabins and bathrooms feature opening portholes
- All cabins feature 220/240v power points
- All mattresses pocket sprung (excluding crew)
- All bathrooms feature full shower stalls, electric freshwater toilets, extractor fan and 240v shaver points

OWNER'S STATEROOM

- Large double bed with drawers below
- Wardrobes with hanging and drawer storage
- Dressing table
- Sofa
- 40" LED TV, DVD, radio/MP3
- Overhead and individual berth lights
- En suite bathroom

FORWARD GUEST CABIN

- Large double bed with drawers below
- Wardrobe with shelves
- Dressing table
- Deck hatch
- Storage lockers
- Overhead and individual berth lights
- En suite bathroom with day access

STARBOARD GUEST CABIN

- Two single berths with drawers below with optional powered sliding conversion to double
- Wardrobe with shelf
- Storage lockers
- Overhead and individual berth lights

ENGINE OPTIONS - DIESEL

Twin Volvo D13-900 (2 x 900mhp)	Speed range: 31-33 knots†
Twin MAN V8 1000 (2 x 1000mhp)	Speed range: 33-35 knots†
Twin MAN V8 1200 (2 x 1200mhp)	Speed range: 36-38 knots†

CREW CABIN (Optional)

- Single berth
- Wardrobe with shelf
- Storage lockers
- Overhead and individual berth lights
- Bathroom with shower, electric freshwater toilet and washbasin

INTERIOR FINISH

- Furniture in Rovere Oak with satin or high gloss finish. American Walnut or Alba Oak available as options
- Avonite worktops and tiled floors in all guest bathrooms
- Avonite worktops in galley
- Timber-laid galley and dining area floors
- Choice of high quality carpet and upholstery fabric from extensive range
- Curtains, blinds or sunscreens to all windows and portholes
- Optional crew cabin fitted with non slip safety flooring

POWER AND DRIVE SYSTEMS

- 5-bladed propellers in nickel aluminium bronze
- Bow thruster (130kgf/287lbf)
- Power-assisted electro-hydraulic steering system with hydraulic back-up
- Electronic engine and gear shift controls
- Dripless shaft seals
- Engine room extractor fan with electronic time delay

ELECTRICAL SYSTEMS

24 Volt:

- 4 x heavy duty batteries for engine starting
- 4 x heavy duty auxiliary batteries
- 60 amp battery charger charges both banks of batteries via an automatic switch charging system
- Remote battery switches with control switch at main panel
- LED lighting throughout

220/240 Volt:

- 11kw diesel generator with own starting battery and specially silenced exhaust
- Polarity check system
- Earth leakage safety trip
- Power points to all areas

FUEL SYSTEM

- Twin fuel tanks (in NS8 marine grade alloy) with interconnection system giving 705 gal/845 US gal/3,200l capacity
- Fuel fillers on port and starboard side decks
- High capacity fuel filters/water traps

WATER SYSTEM

- 116 gal/159 US gal/530l plus 16 gal/19 US gal/73l hot water calorifier and heated by engines and 240v immersion heater
- Water level gauge
- Deck filler
- Electric freshwater WC system with 40 gal/48 US gal/180l holding tank
- Black water holding tank 55 gal/66 US gal/250l

FIRE EXTINGUISHERS

- Automatic/manual override fire extinguishers in engine room with manual override
- Hand-operated fire extinguishers (5) in owner's stateroom, guest cabins, galley and helm position

BILGE SYSTEMS

- Automatic electric bilge pumps (6)
- High capacity manual bilge pump with valve system and bilge suction points in same area

OTHER ITEMS SUPPLIED AS STANDARD

- Quilted bedspreads supplied to all cabins (except optional crew)
- Ensign staff
- Fenders (6) and warps (4)
- First aid kit
- Set of manuals

